

SN2105 HIGH SPEED TRANSMISSION

Model SN 2105 is a high speed gearbox designed for test stand use. It has a single input and single output and is a parallel shaft design with a single increasing stage of gearing. The case is cast iron with mounting feet. The gearbox is dry sump and requires an external lubricant source.

Nominal capacity:	200 HP
Max input speed:	4500 rpm (standard) Higher by special design.
Standard output speed:	12,000 rpm. (standard) Up to 20,000 rpm optional
Ratio range:	Up to 1:6
Accel/decel rate:	2000 rpm/sec (standard)
Rotation:	Output rotation is anti-input. Gearbox can be rotated in either direction..
Input options:	Keyed stub shaft (standard) Hydraulic motor pad optional Various shaft configurations including splined
Output options:	Keyed stub shaft (standard) AND20002, AND20006 pads Splined shaft Custom
Lubrication:	Dry sump. Requires separate lube supply. MIL-L-7808, MIL-L-5056, MIL-L-23699 AGMA #1
Mounting:	Mounting feet provided (standard)
Size:	19'H X 17.5'W X 14.25'L (approx)
Weight:	Approximately 200 lbs.

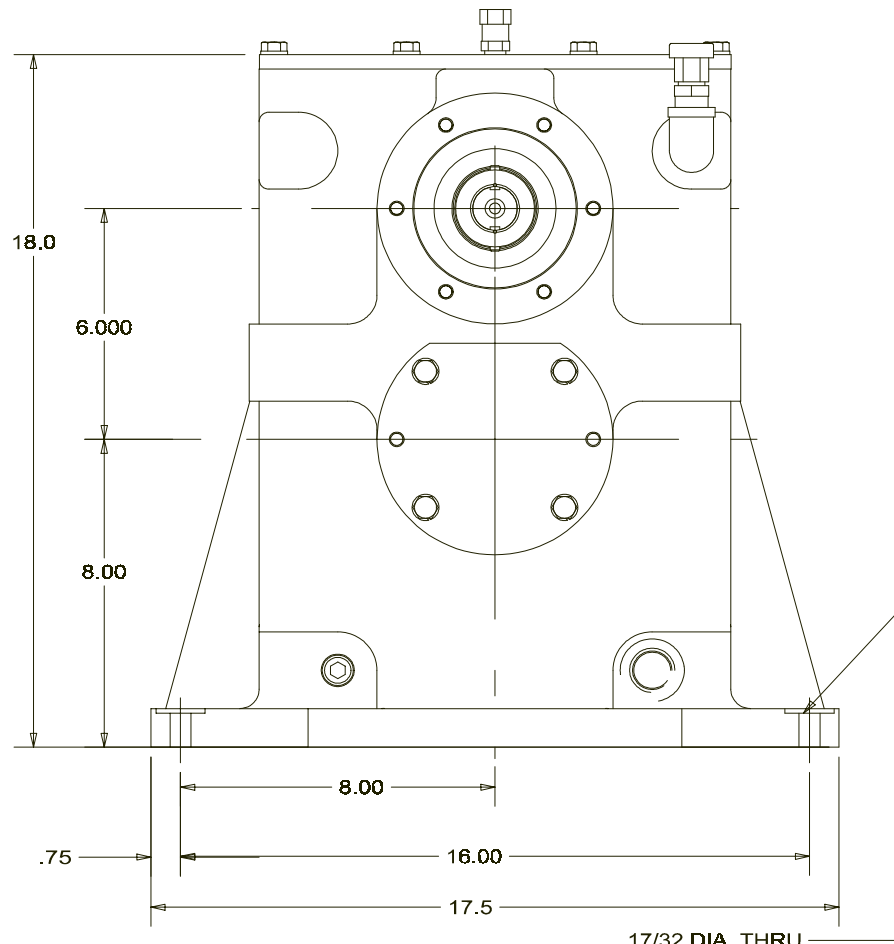
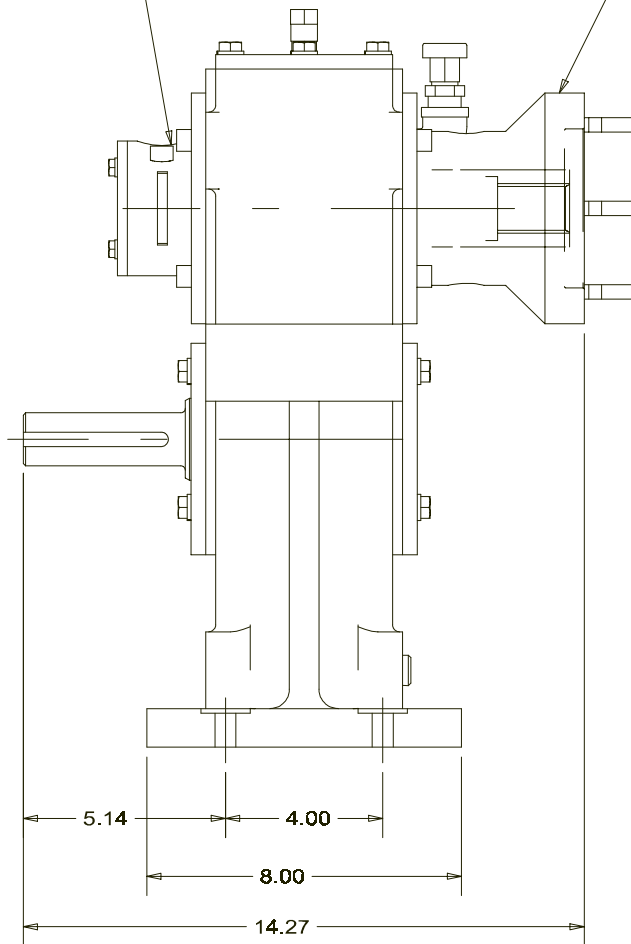
SPECIFICATION DRAWING

Note: Drawing is not to scale and may not depict proportions correctly. Do not scale. Do not use for layout. Use only certified drawings provided with order.

SN2105 HIGH SPEED GEARBOX

SPEED PICKUP
(OPTIONAL)

OUTPUT PAD PER AND20002
(OPTIONAL)



17/32 DIA. THRU.
-4- MOUNTING HOLES