

**MODEL GR16A  
REDUCTION GEAR**

Model GR16A is a heavy duty anti-engine rotation reduction gear. A clutch and bell housing is included for mounting to an engine for a compact package with proper alignment. The gears are helical and carburized for ultimate strength and endurance. Gears are designed per AGMA specifications. The bearings are anti-friction and the case is cast iron. A wide variety of ratios are available.

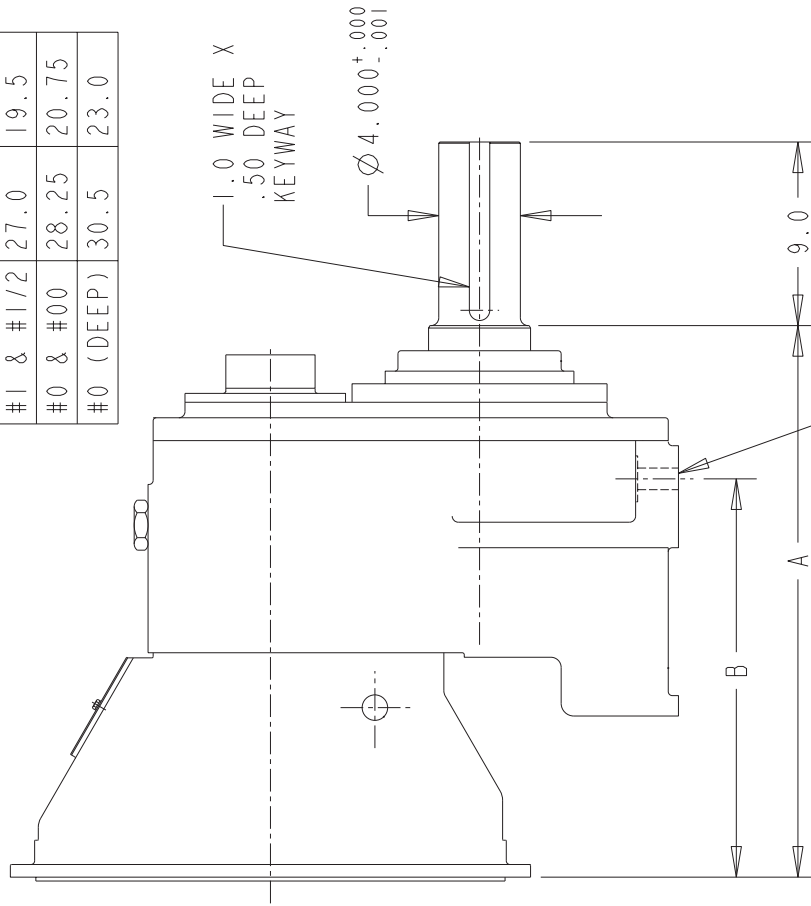
<b>CAPACITY (Maximum input torque):</b>	1650 lb. ft.
<b>MAXIMUM INPUT SPEED:</b>	2200 RPM
<b>RATIOS:</b>	1.50, 1.60, 1.72, 1.85, 2.0, 2.16, 2.33, 2.52, 2.75, 3.00
<b>BELL HOUSINGS:</b>	SAE #1, #1/2, #0, #00
<b>CLUTCHES:</b>	IBF214, SP314, SP218, SP318 18" rubber block drive
<b>OUTPUT SHAFT:</b>	4.000" diameter, 9" long with 1" x 1/2" keyway
<b>REAR SUPPORT:</b>	Two mounting feet provided
<b>LUBRICATION:</b>	Lube pump furnished 32 pints sump capacity
<b>COOLING:</b>	A heat exchanger furnished.
<b>WEIGHT:</b>	1380 pounds

07/31/03

# MODEL GR16A REDUCTION GEAR

CONTACT COTTA FOR OTHER  
OUTPUT ORIENTATIONS  
(3, 9, OR 12 O'CLOCK)

BELLHSG SAE#	DIM A	DIM B
#1 & #1/2	27.0	19.5
#0 & #00	28.25	20.75
#0 (DEEP)	30.5	23.0



DO NOT USE DIMENSIONS ON THIS DRAWING FOR  
INSTALLATIONS, USE CERTIFIED PRINT PROVIDED  
WITH ORDERS.