

**MODEL GRXL1600E
REDUCTION GEAR**

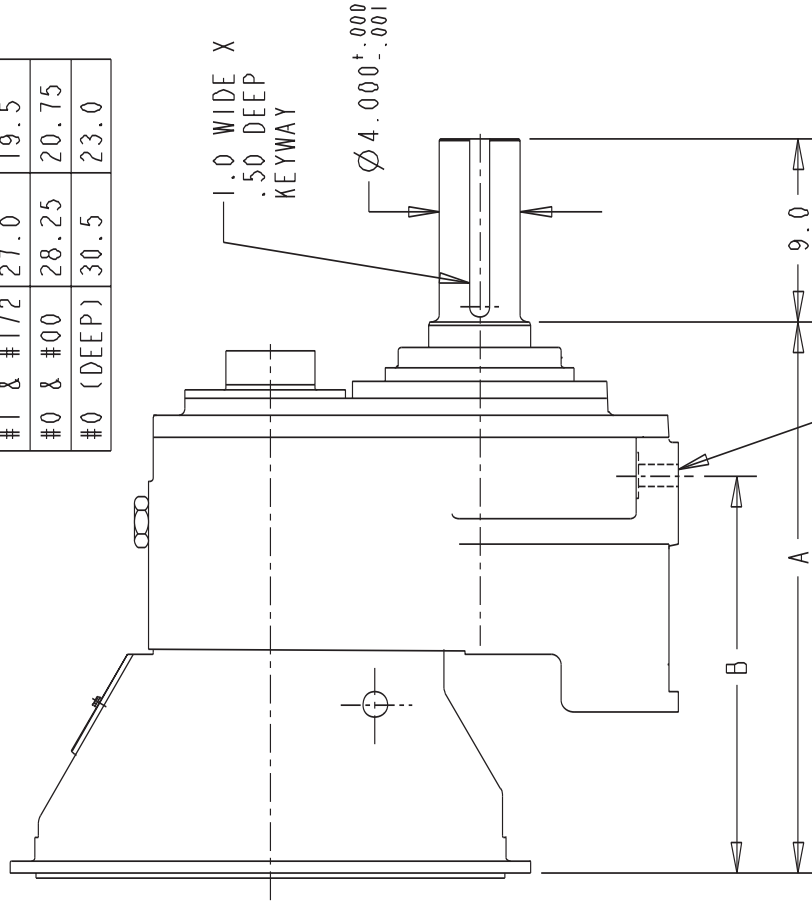
Model GRXL1600E is a heavy duty reduction gear with engine rotation that includes a clutch and mounts to an engine for a compact package with proper alignment. The gears are helical and carburized for ultimate strength and endurance. Gears are designed per AGMA specifications and are precision ground. The bearings are tapered roller and the case is cast iron. A wide variety of ratios are available.

CAPACITY (nominal input torque):	2600 lb. ft.
MAXIMUM INPUT SPEED:	2200 RPM
RATIOS:*	1.28, 1.38, 1.48, 1.71, 2.0, 2.17, 2.35, 2.56, 2.80, 3.0
BELL HOUSINGS:	SAE #0, #00
CLUTCHES:	Hydraulically actuated 3 plate clutch Option: severe duty clutch discs
OUTPUT SHAFT:	4.000" diameter, 9" long with 1" x 1/2" keyway
REAR SUPPORT:	Two mounting feet are provided
COOLING:	A heat exchanger is furnished
WEIGHT:	1700 lbs

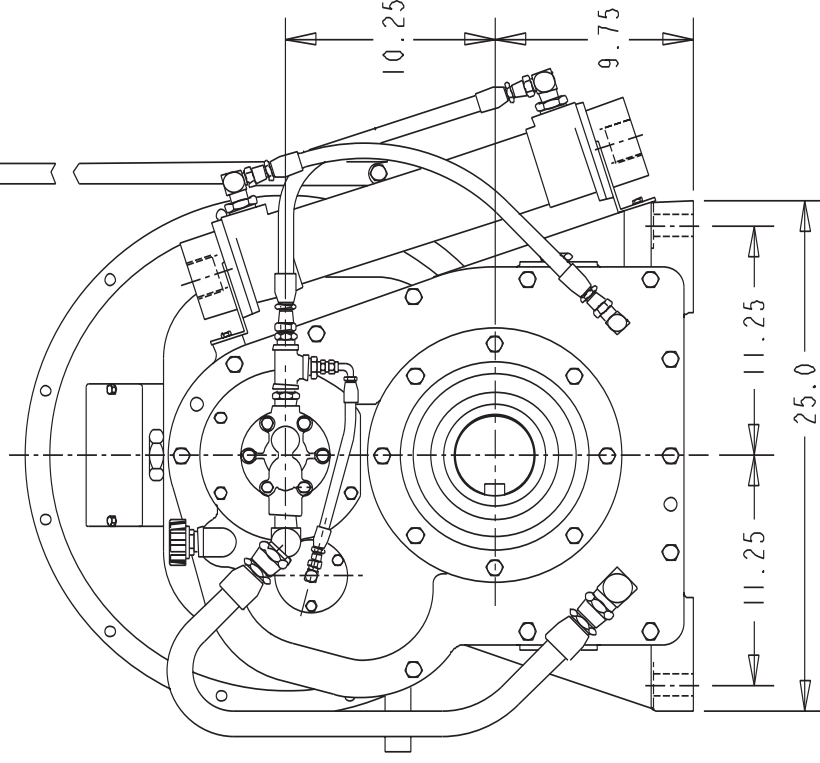
Note: a lube pump capable of delivering 12 GPM at 425 PSI must be provided.

MODEL GR1600E REDUCTION GEAR

BELLHSG SAE#	DIM A	DIM B
#1 & #1/2	27.0	19.5
#0 & #00	28.25	20.75
#0 (DEEP)	30.5	23.0



CONTACT COTTA FOR OTHER
OUTPUT ORIENTATIONS
(3, 9, OR 12 O'CLOCK)



DO NOT USE DIMENSIONS ON THIS DRAWING FOR
INSTALLATIONS, USE CERTIFIED PRINT PROVIDED
WITH ORDERS.