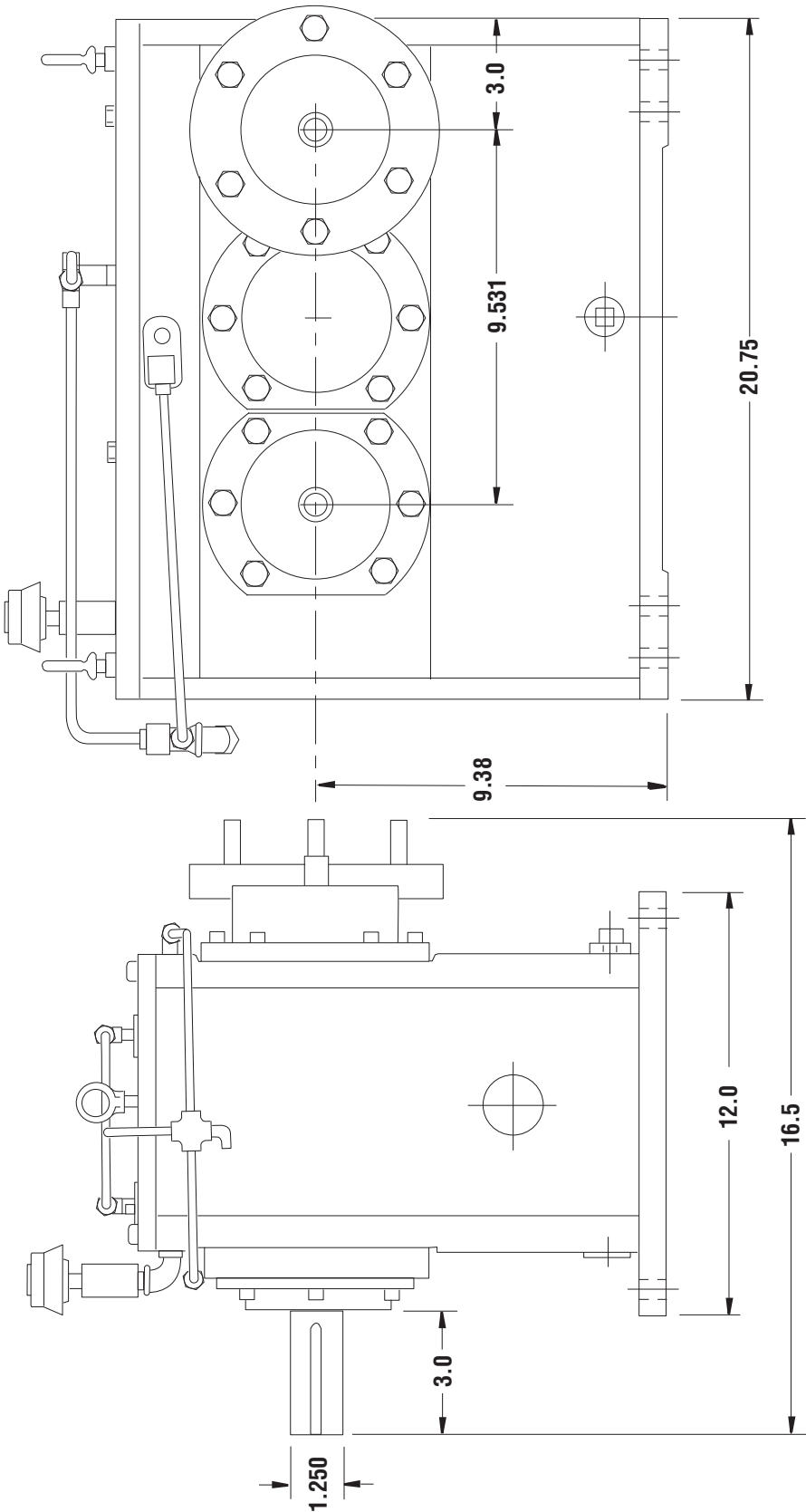


MODEL SN1708
HIGH SPEED

Model SN1708 is a foot mounted high speed transmission designed for test stand use. It has a double train of gears that are helical, carburized and precision ground per AGMA class Q-12. The bearings are anti-friction. The case is stress relieved fabricated steel.

MAX. HORSEPOWER:	250 HP
MAX. OUTPUT SPEED:	60,000 RPM
RATIOS:	8.43, 8.94, 9.18, 15.225 (Max.) (Contact Cotta for other available ratios)
MAXIMUM ACCELERATION\DECELERATION:	2000 RPM/second at output shaft
INPUT SHAFT:	1.250" diameter with .250W x 3.125 deep keyway
OUTPUT:	AND20006
DIRECTION OF ROTATION:	Output rotation is the same as input rotation
LUBRICATION:	AGMA Grade 1, ISO viscosity grade 68 Separate motor driven lube pump furnishing oil spray on bearings and gear meshes Oil filter and level gauge Separate lube tank assembly is required for output speeds over 40,000 RPM
COOLING:	Water to oil heat exchanger with modulating water control valve
ACCESSORIES:	Temperature/pressure switch to signal high oil temperatures or low pressures
OPTIONS:	Stub output shaft AND20002 output pad AND10262 output pad
FINISH:	Two coats gray polyurethane enamel
WEIGHT:	1650 lbs

MODEL SN1708
HIGH SPEED



DO NOT USE DIMENSIONS ON THIS DRAWING FOR INSTALLATIONS. USE CERTIFIED PRINT PROVIDED WITH ORDERS.