

**MODEL SR3A  
REDUCTION GEAR**

Model SR3A is a heavy duty reduction gear having anti-engine rotation that includes a clutch and mounts to an engine for a compact package with proper alignment. The gears are helical and carburized for ultimate strength and endurance. Gears are designed per AGMA specifications. The bearings are tapered roller and the case is heavy cast iron. A wide variety of ratios are available.

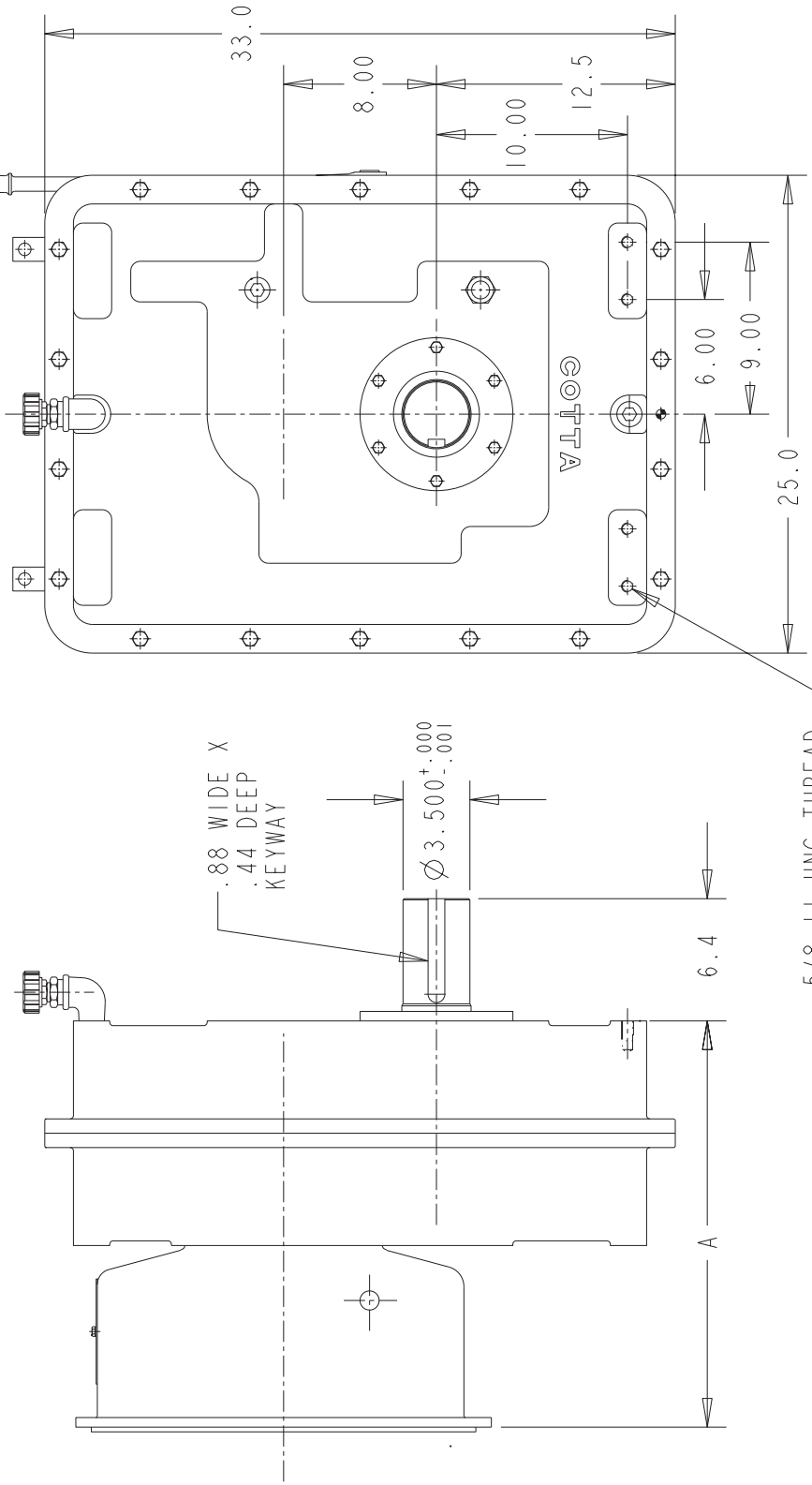
<b>CAPACITY (nominal input torque):</b>	1400 lb. ft.
<b>MAXIMUM INPUT SPEED:</b>	3000 RPM
<b>RATIOS:</b>	1.38, 1.58, 1.82, 2.00, 2.44, 3.04
<b>BELL HOUSINGS:</b>	SAE #1, #2, #0
<b>CLUTCHES:</b>	SP211, SP114, SP214, SP314, SP218
<b>OUTPUT SHAFT:</b>	3.500" diameter, 5" long 7/8 x 7/16 keyway
<b>REAR SUPPORT:</b>	4 holes 5/8-11 on rear cover for customer's support plate
<b>LUBRICATION:</b>	Splash
<b>WEIGHT:</b>	940 lbs

07/31/03

# MODEL SR3A REDUCTION GEAR

OUTPUT CAN BE ORIENTED  
AT 3, 6, 9, OR 12 O'CLOCK POSITION  
CONTACT COTTA FOR MOUNTING HOLE LOCATION

SAE BELLHSG #	DIM A
#3	19.38
#2	19.38
#1	21.25
#1 (DEEP)	22.75



DO NOT USE DIMENSIONS ON THIS DRAWING FOR  
INSTALLATIONS, USE CERTIFIED PRINT PROVIDED  
WITH ORDERS.