

# Cotta®

## HS0305 HIGH SPEED RIGHT ANGLE

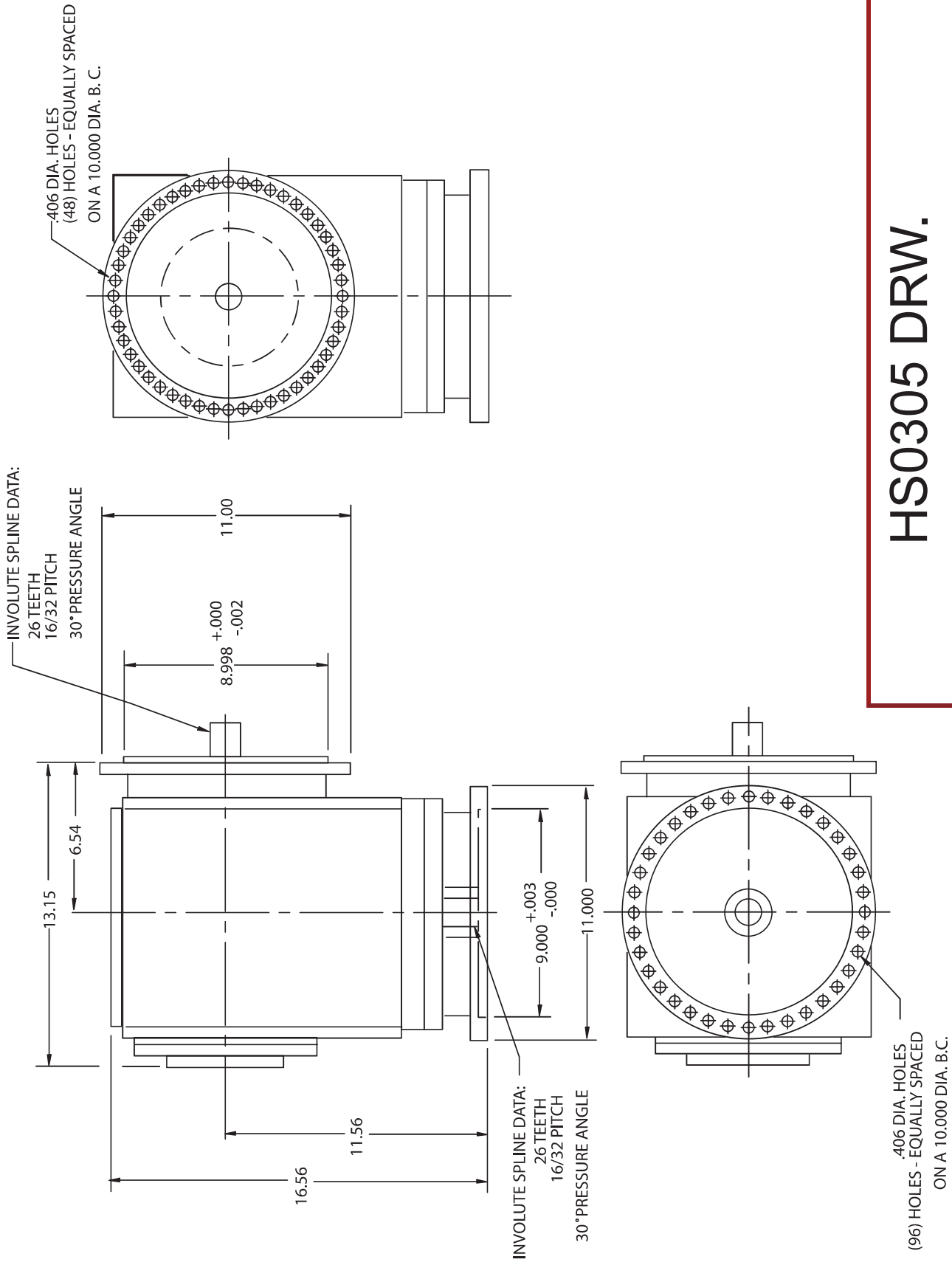
### Product Description:

Model HS0305 is a high-speed right angle gearbox that is designed to flange mount to an existing test stand. The flange mounting hole pattern allows the output pad to be positioned in 7.5 degree increments about the input centerline. This gearbox is designed for high acceleration and deceleration speed. A separate lubrication system including reservoir is required.

<b>POWER:</b>	90 lb-ft torque max at input 300 HP max power
<b>OUTPUT SPEED:</b>	30,000 RPM
<b>RATIOS:</b>	2.0 overspeed. Contact Cotta for others
<b>MAX ACCEL / DECEL RATE:</b>	7500 rpm/sec at output
<b>INPUT CONFIGURATION:</b>	AND 10267 compatible except with 48 mounting holes versus 12 holes
<b>OUTPUT CONFIGURATION:</b>	AND 20007 compatible except with 48 holes versus 12 holes
<b>ROTATION:</b>	Input can be driven cw or ccw. Output rotates opposite to input.
<b>LUBRICATION:</b>	A separate lube system required and is supplied by Cotta.
<b>OPTIONS:</b>	Accelerometers, speed pickup, and other application specific items can be accommodated or supplied.
<b>APPROX. WEIGHT:</b>	750 lbs. including lube components.
<b>STANDARD FINISH:</b>	2-part polyurethane enamel



This drawing shows general arrangement and approximate space claim. Do not design or lay out using this drawing. Use only certified drawings provided by Cotta Engineering.



# HS0305 DRW.