

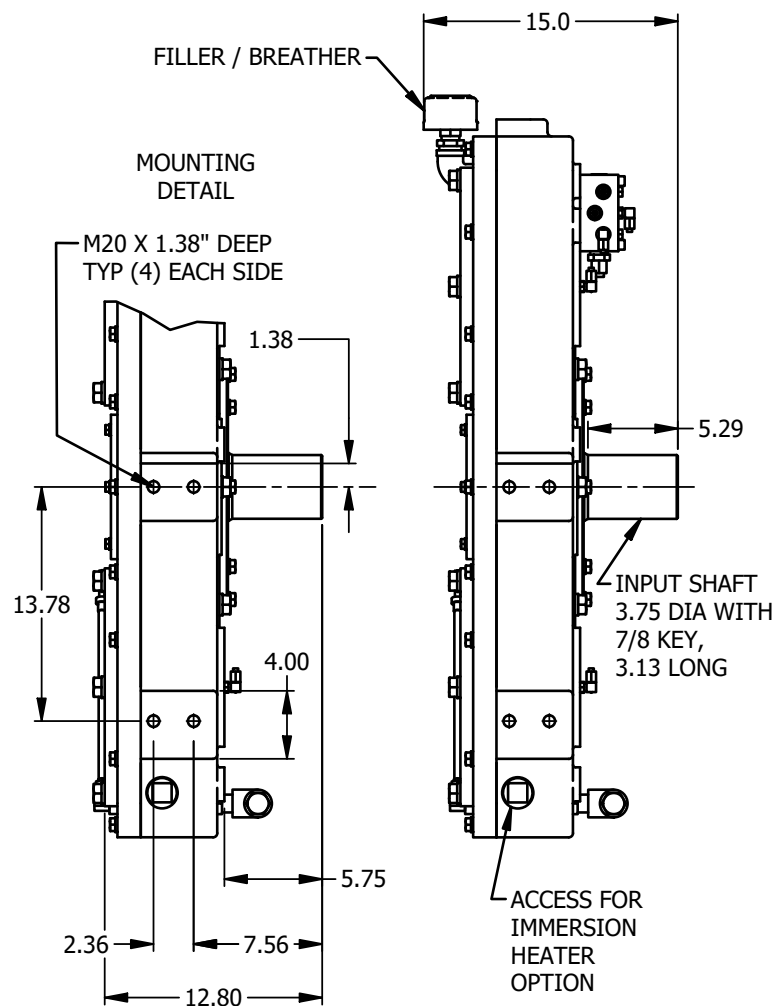
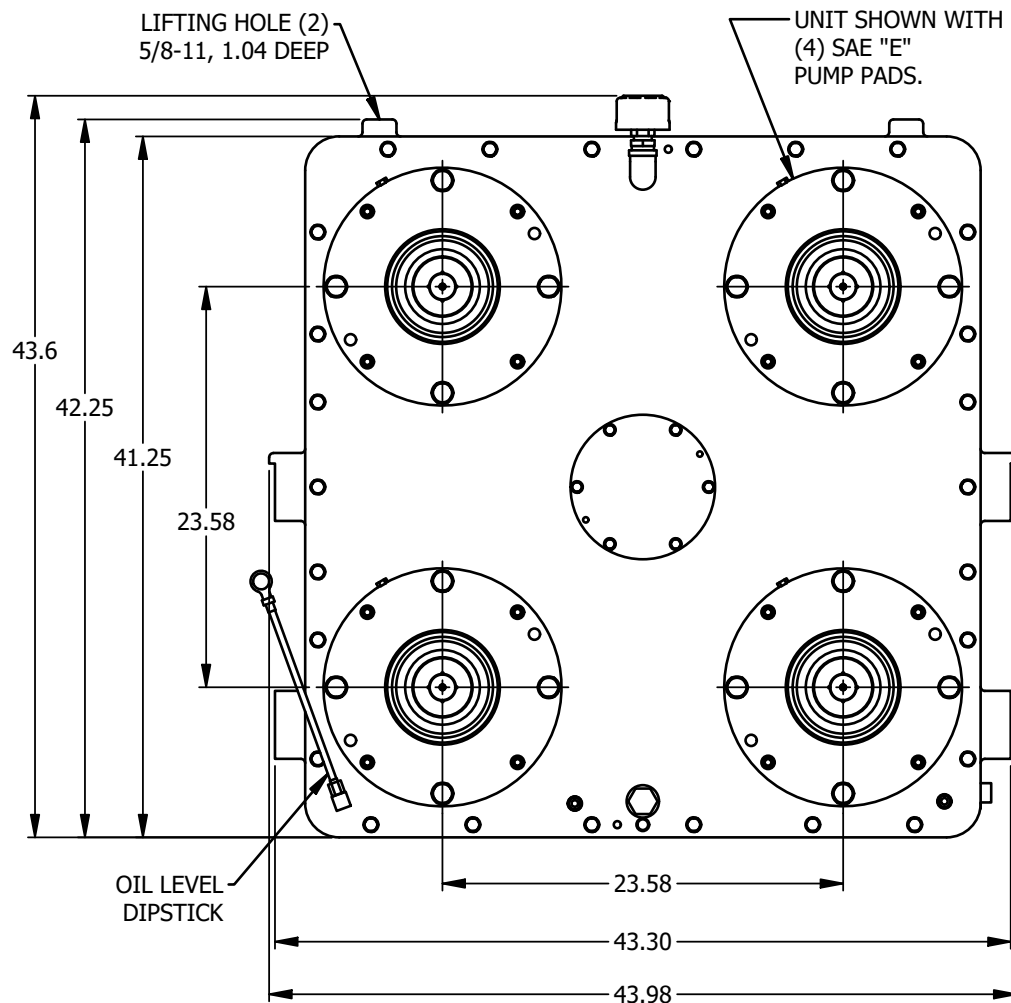


MODEL PD2225 PUMP DRIVE GEARBOX

Product Description

Model PD2225 is a heavy duty 4-station pump drive offered in either direct engine mount via SAE flange, or independent mount. This unit incorporates counter shafts to provide output stations that rotate the same direction as the input shaft. The input shaft can be extended through the case for use as a PTO shaft, lube-pump drive, or additional pump pad.

POWER:	1350 HP max input 270 HP max per output
MAX INPUT / OUTPUT SPEED:	2100 RPM
MAX TORQUE:	Input: 3100 lb-ft Through shaft: 1500 lb-ft
RATIO:	1:1
ROTATION:	Outputs rotate same direction as input.
OUTPUT OPTIONS:	Various SAE and ISO pump pads. PTO shafts, disconnects, clutches, custom.
MOUNTING OPTIONS:	SAE flange sizes #00, #0, #1. Independent.
FLYWHEEL COUPLING OPTIONS:	Overcenter clutches, torsional couplings, drive plates, custom.
LUBRICATION:	Internal reservoir. Lube pump and heat exchanger required. Option for customer supplied sump heater.
APPROXIMATE WEIGHT:	2000 lbs.



PD2225 DRW.