

Product Description:

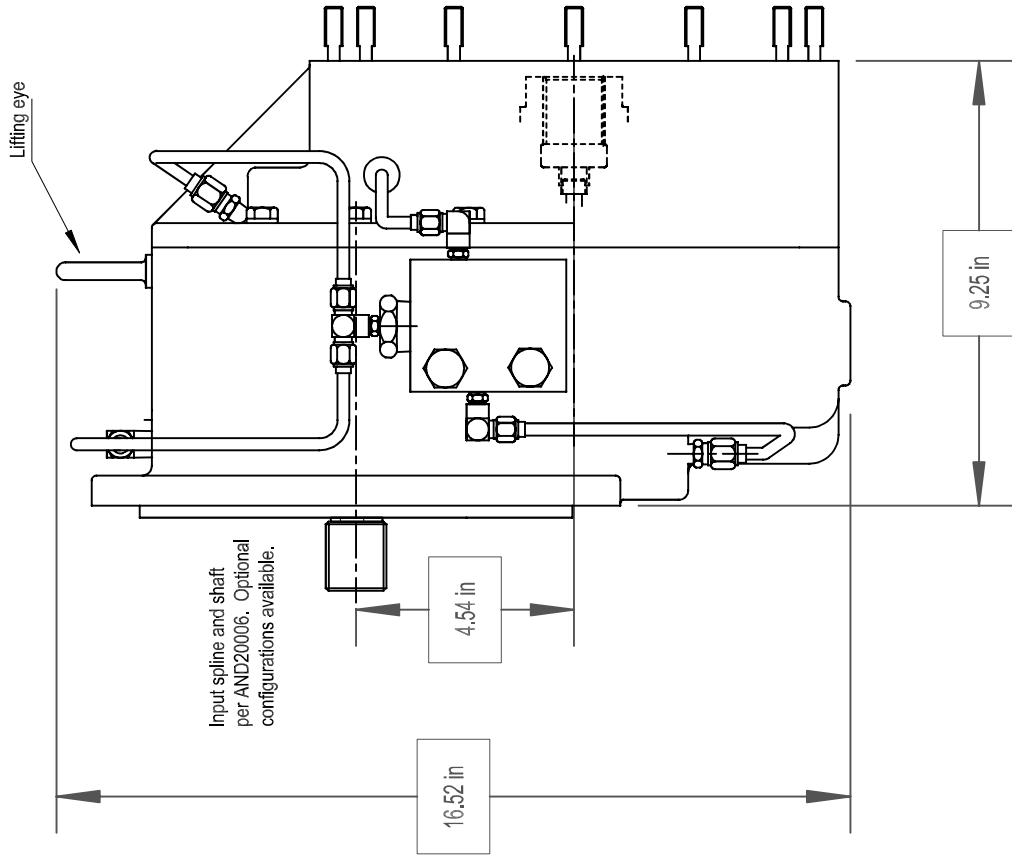
Model SN1572 Flex Drive is a single stage add-on speed multiplier that mounts directly to an existing gearbox via aerospace accessory drive pad and provides an aerospace accessory drive pad output. The gearbox requires pressure lube, seal scavenge, and a gravity drain line. In some applications the host gearbox can support these lube requirements but if not see T-17 Lube System specification for an example of an acceptable independent supply.

POWER:	400 HP nominal
OUTPUT SPEED:	30,000 output
RATIOS:	1.267 to 2.0 overspeed
MAX ACCEL / DECEL RATE:	2000 rpm/sec at output
INPUT CONFIGURATION:	Will fit AND20006 XVI (A thru D)
OUTPUT CONFIGURATION:	AND20006, AND20002, AND20007 (Except for O ring counter bore in spline shaft on AND20007)
ROTATION:	Input can be driven ccw or cw. Output rotation is opposite to input.
LUBRICATION:	Gearbox requires external lube support provided either by host gearbox or separate lube cart similar to T-17.
OPTIONS:	Accelerometers, speed pickup, and other application specific items can be accommodated or supplied.
APPROXIMATE WEIGHT:	150 lbs. approximate.
STANDARD FINISH:	2-part polyurethane enamel

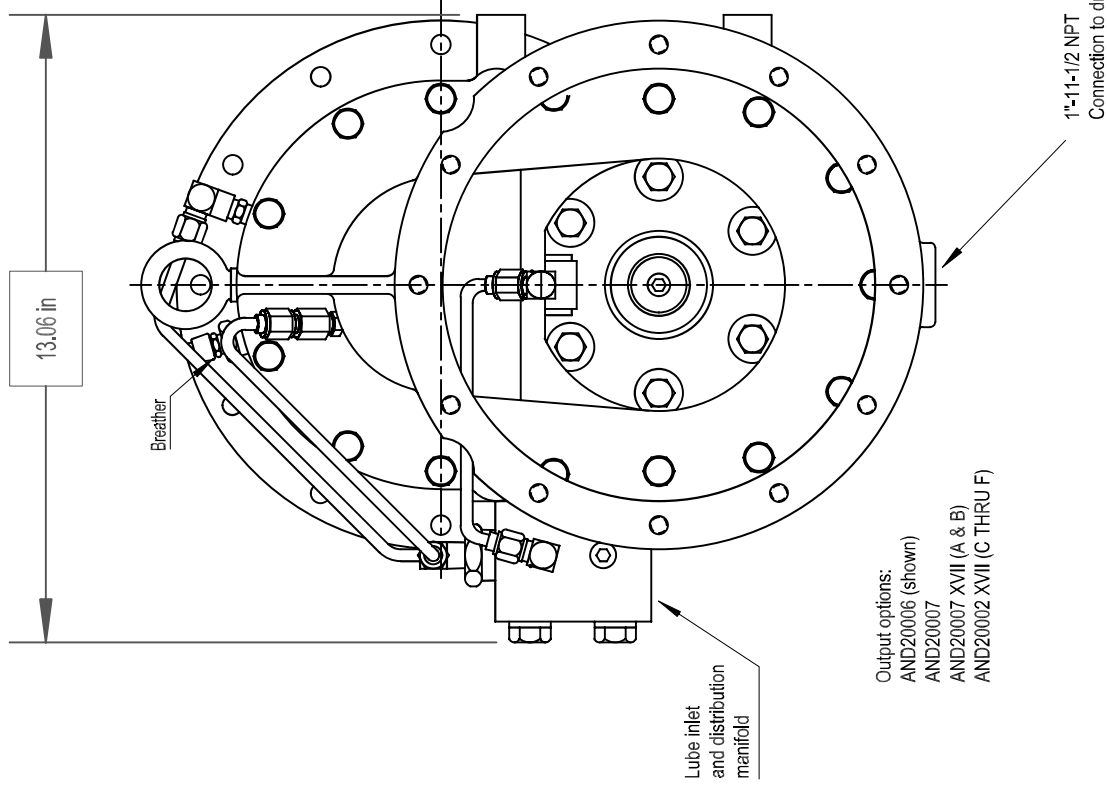


This drawing shows general arrangement and approximate space claim. Do not design or lay out using this drawing. Use only certified drawings provided by Cotta Engineering.

Input flange is AND20006 compatible when bottom stud is removed



Input spline and shaft per AND20006. Optional configurations available.



Output options:
AND20006 (shown)
AND20007
AND20007 XVII (A & B)
AND20002 XVII (C THRU F)

SN1572 DRW.