

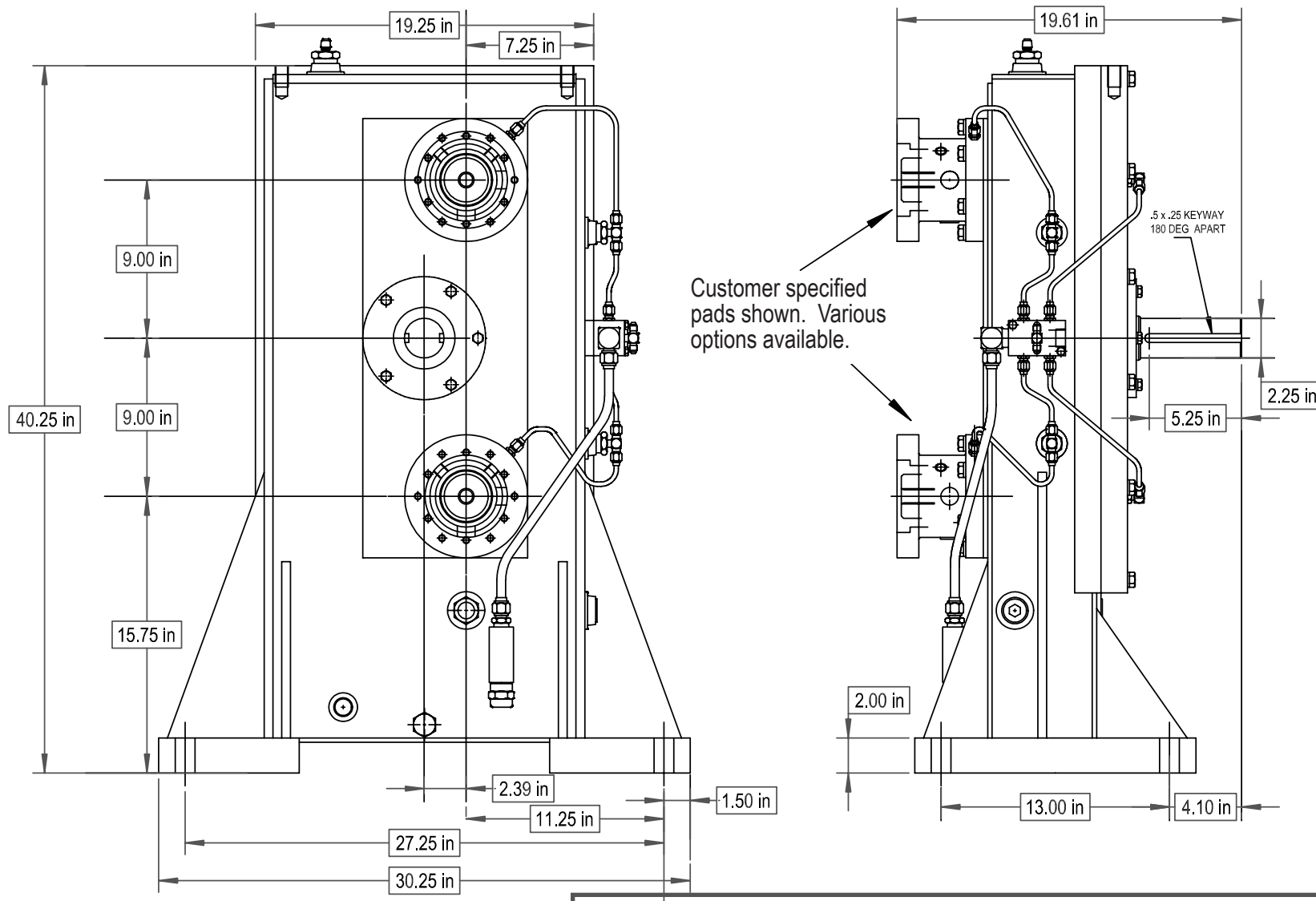
Product Description:

Model SN2087 is a foot mounted, single-stage, dual output, high-speed gearbox that is designed for test stand use. Both output pads rotate in the same direction and have the same ratio. The outputs are oriented vertically versus horizontally.

POWER:	300 HP nominal
OUTPUT SPEED:	10,000 RPM
RATIOS:	1 : 2.59 Contact Cotta for others
MAX ACCEL / DECEL RATE:	2000 rpm/sec at output
INPUT CONFIGURATION:	Keyed stub shaft. Contact cotta for optional inputs.
OUTPUT CONFIGURATION:	Customer specified mounting pads. Shafts and various other pads available.
ROTATION:	Input can be driven ccw or cw. Outputs rotate the same direction and opposite to input.
LUBRICATION:	Positive delivery. Pump, heat exchanger, and necessary temp and pressure controls are furnished.
OPTIONS:	Accelerometers, speed pickup, and other application specific items can be accommodated or supplied.
APPROXIMATE WEIGHT:	900 lbs. approximate
STANDARD FINISH:	2-part polyurethane enamel



This drawing shows general arrangement and approximate space claim. Do not design, scale, or lay out using this drawing. Use only certified drawings provided by Cotta Engineering.



SN2087 DRW.