

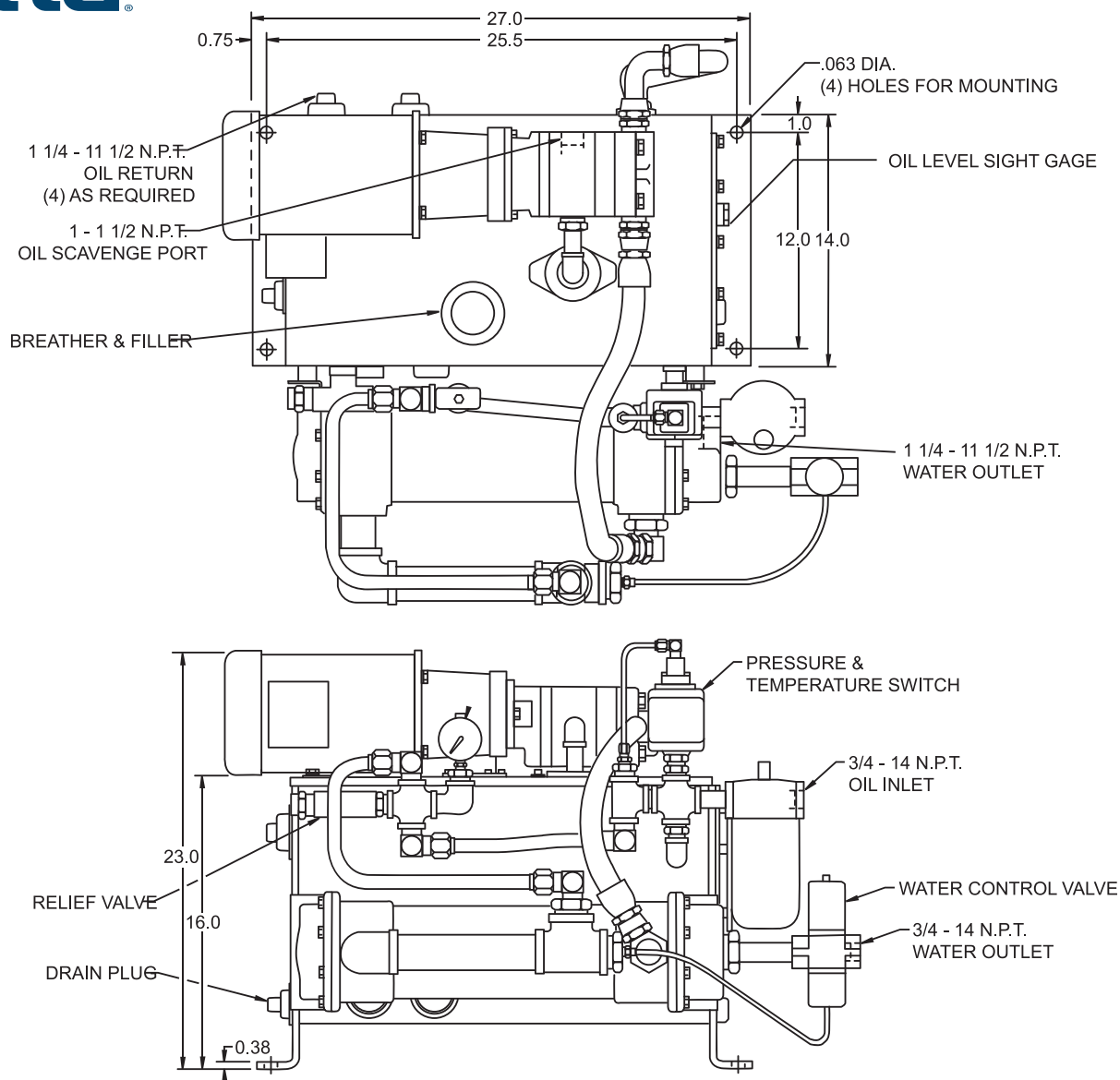
Product Description:

The T17-7 is a remote pressure lubrication system for supplying filtered oil to high speed gearboxes which require a separate lube system. It is furnished with an oil pump with scavenge section for labyrinth type seals. This is a completely assembled system that includes safeguards to protect the transmission from low lubricant pressure and/or high lubricant temperature.

TANK:	17 gallon maximum capacity, Internally baffled, foot mounted. Access panel provided for cleaning.
MOTOR:	60 cycle, 230/460 volt 1 HP with 1725 RPM 50 cycle, 190/380 volt 3/4 HP with 1425 RPM
CIRCULATION PUMP:	10 GPM
SCAVENGE PUMP:	5 GPM
HEAT EXCHANGER:	Oil to water tube type, 2 pass.
OIL FILTER:	10 micron with by-pass and filter condition gauge.
TEMPERATURE PRESSURE SWITCH:	High temperature and low pressure switches.
TEMPERATURE ACTUATED MODULATING WATER CONTROL VALVE:	Lube temperature probe in reservoir with lead to water control valve to control flow of water through heat exchanger.
OIL LEVEL GAUGE:	Glass tube type
INLET PORTS:	(4) 1-1/4" pipe tap holes provided for ease of plumbing.
DRAIN PLUGS:	Magnetic
OIL FILLER:	Screened—strainer type.
PRESSURE GAUGE:	0 to 60 PSI
PRESSURE RELIEF VALVE:	20-25 PSI
WEIGHT:	385 lbs.



This drawing shows general arrangement and approximate space claim. Do not design, scale, or lay out using this drawing. Use only certified drawings provided by Cotta Engineering.



T17 LUBE DRW.