



# MODEL TR2217 TRANSFER CASE

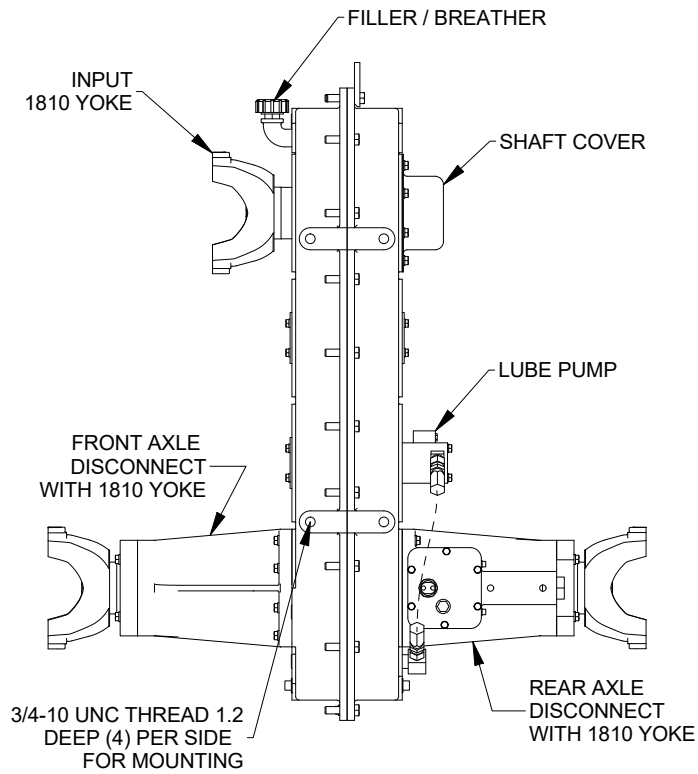
## Product Description:

Model TR2217 is a 4 shaft transfer case is designed for maximum application flexibility and provides up to six identical Input/output stations. Each station can be provided with 2.75 X 10 splined shaft for fitment to with yokes or flanges. A disconnect (de-clutch) can also be fitted to the I/O stations to provide power interruption. An optional line of disconnects feature SAE pump pad outputs. Depending upon option type and placement the TR2217 can be configured as a transfer case, drop box, PTO, or pump drive. Most options are available for field retrofit without having to return, remove, or disassemble the gearbox.

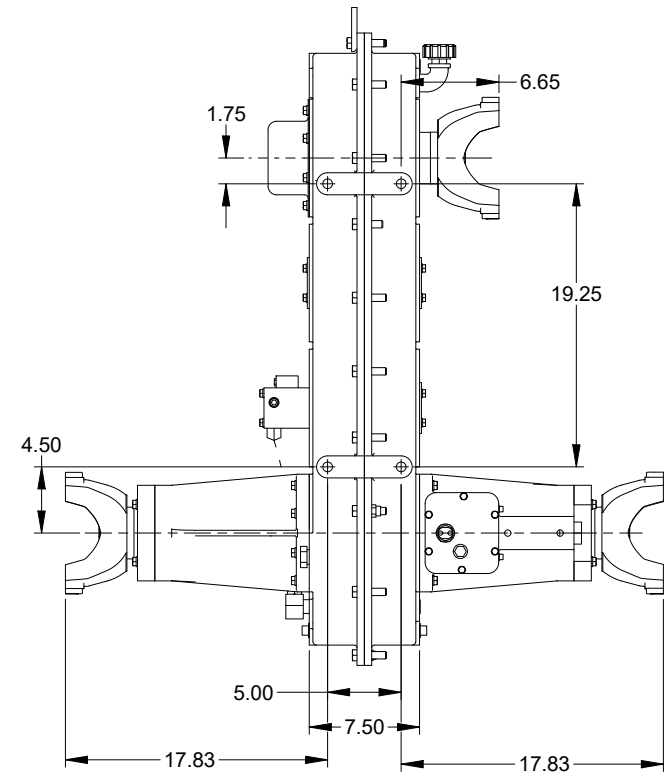
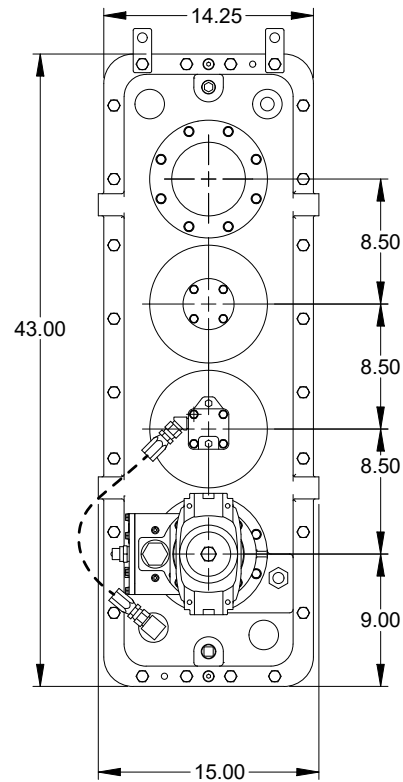
<b>NOMINAL APPLICATION POWER:</b>	600 HP
<b>TORQUE CAPACITY:</b>	2200 lb-ft. continuous through gears 6800 lb-ft. continuous through shaft 17000 lb-ft. momentary through shaft
<b>MAX SPEED:</b>	2800 RPM
<b>RATIO:</b>	1.15 overspeed, 1.15 reduction, 1.0, depending upon input location.
<b>CENTER DISTANCE:</b>	25.5 inches
<b>ROTATION:</b>	Two shafts rotate same as input, and two same as output.
<b>LUBRICATION:</b>	Internal reservoir. Lube pump furnished.
<b>SHIFTING:</b>	Disconnects are air shift. Mechanical shift option available
<b>OUTPUT SHAFT SIZE:</b>	2.75-10 straight side spline
<b>COMMON OPTIONS:</b>	SAE and ISO yokes and flanges, disconnects, pump pads, clutches, stub shaft
<b>WEIGHT:</b>	Approximately 715 lbs. w/o options



This drawing shows general arrangement and approximate space claim. Do not design, scale, or lay out using this drawing. Use only certified drawings provided by Cotta Engineering.



EXAMPLE CONFIGURATION USING FOUR OF THE SIX I/O STATIONS.



TR2217 DRW.