



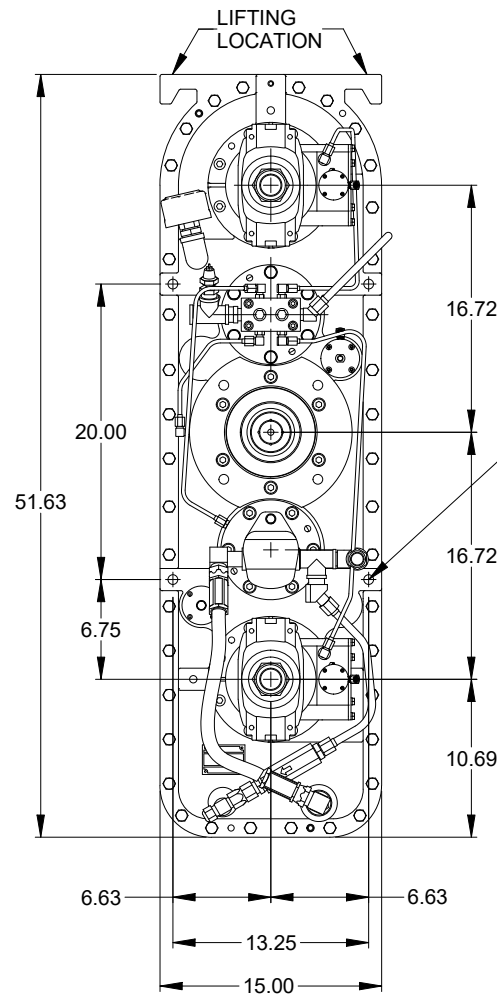
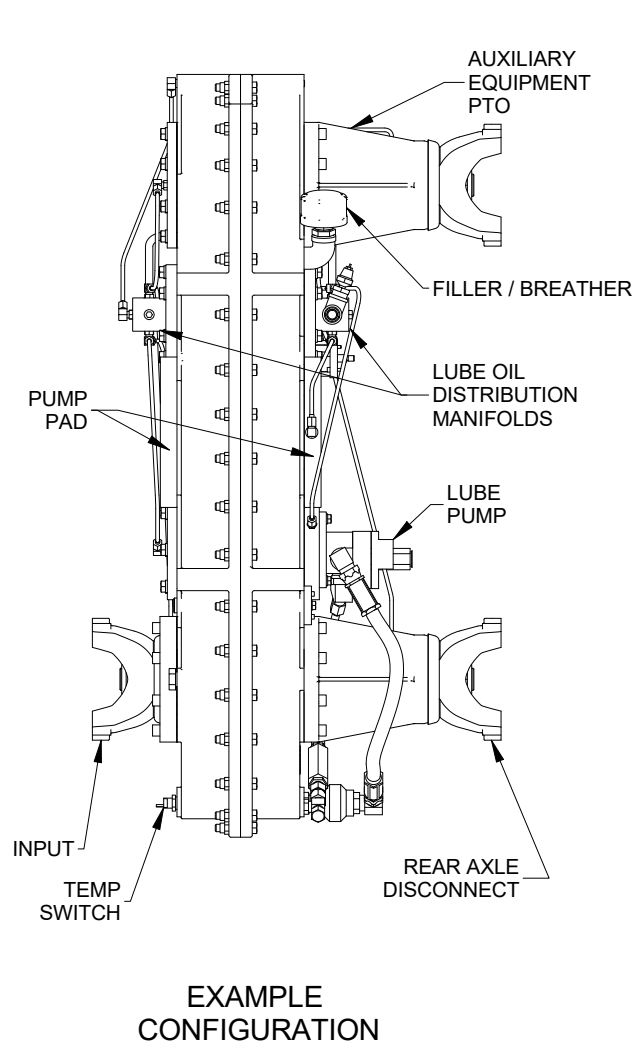
# MODEL TR2248 TRANSFER CASE

## Product Description:

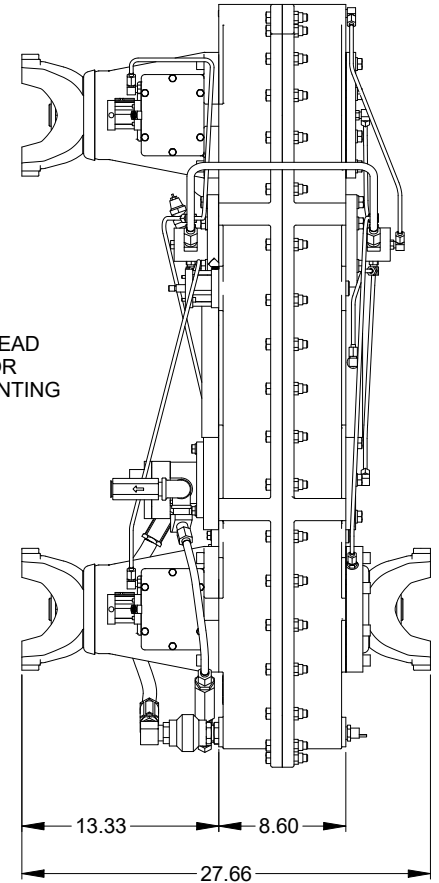
Model TR2248 is a 5 shaft transfer case designed to provide vehicle motive power to road to the work site and then shift to PTO to re-direct engine power to deck and ancillary equipment. A combination of internal and external disconnects (de-clutches) serve to shift from road-to-PTO as well as clutching and de-clutching the deck equipment. A variety of optional pump pads, disconnects, yokes, etc are available to power a wide range of ancillary equipment. The spec drawing on reverse side shows a typical configuration.

<b>NOMINAL APPLICATION POWER:</b>	725 HP
<b>TORQUE CAPACITY:</b>	1900 lb-ft. continuous through gears 12500 lb-ft. continuous through PTO shaft 17000 lb-ft. momentary through PTO shaft
<b>MAX SPEED:</b>	3000 RPM
<b>RATIO:</b>	1:1 input to output 1.2 overspeed input to pump-pad
<b>CENTER DISTANCE:</b>	33.44 inches input to output
<b>ROTATION:</b>	Output stations rotate same direction as input
<b>LUBRICATION:</b>	Internal reservoir. Lube pump furnished.
<b>SHIFTING:</b>	Air shift
<b>OUTPUT SHAFT SIZE:</b>	2.75-10 straight side spline
<b>COMMON OPTIONS:</b>	SAE and ISO yokes and flanges, disconnects, pump pads, clutches, stub shaft
<b>WEIGHT:</b>	Approximately 1200 lbs.

This drawing shows general arrangement and approximate space claim. Do not design, scale, or lay out using this drawing. Use only certified drawings provided by Cotta Engineering.



3/4-10 UNC THREAD  
 (4) PER SIDE FOR  
 GEARBOX MOUNTING



**TR2248 DRW.**