



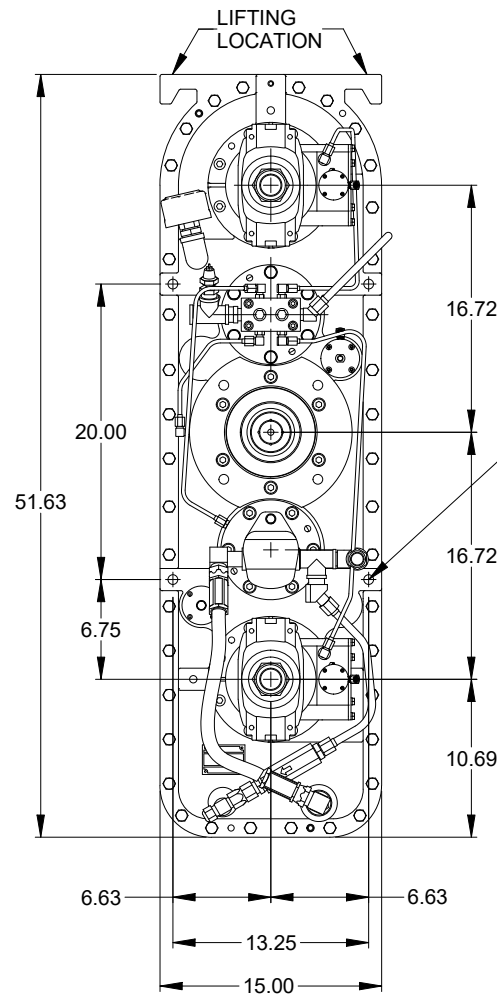
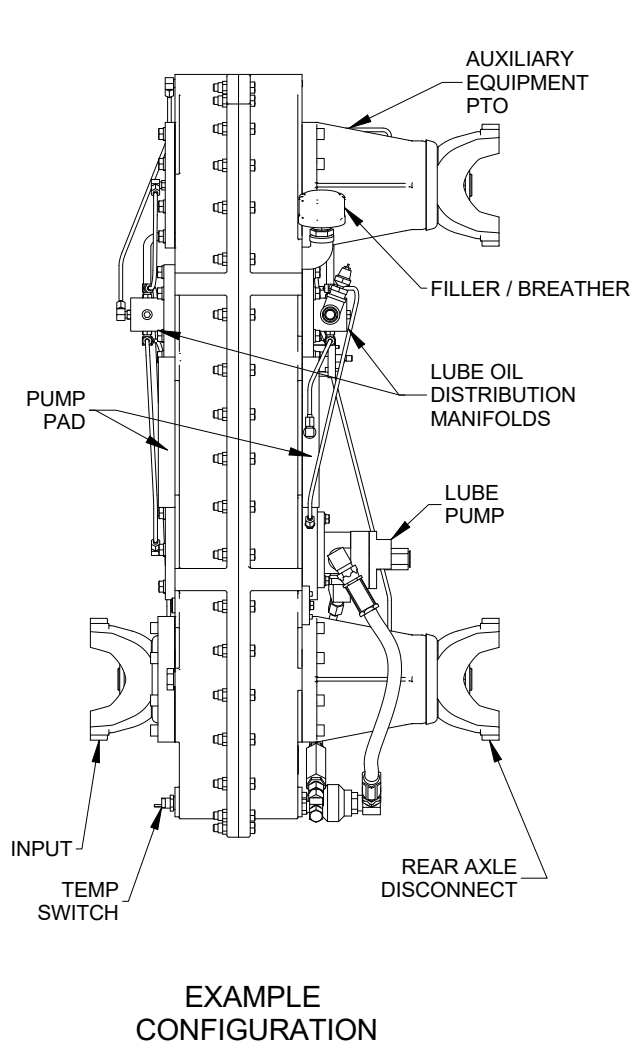
# MODEL TR2248 TRANSFER CASE

## Product Description:

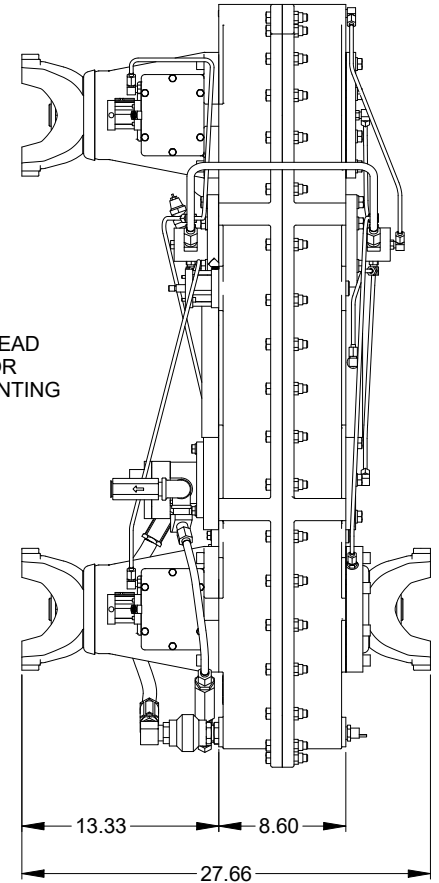
Model TR2248 is a 5 shaft transfer case designed to provide vehicle motive power to road to the work site and then shift to PTO to re-direct engine power to deck and ancillary equipment. A combination of internal and external disconnects (de-clutches) serve to shift from road-to-PTO as well as clutching and de-clutching the deck equipment. A variety of optional pump pads, disconnects, yokes, etc are available to power a wide range of ancillary equipment. The spec drawing on reverse side shows a typical configuration.

|                                   |   |
|-----------------------------------|---|
| <b>NOMINAL APPLICATION POWER:</b> | 725 HP  |
| <b>TORQUE CAPACITY:</b>           | 1900 lb-ft. continuous through gears<br>12500 lb-ft. continuous through PTO shaft<br>17000 lb-ft. momentary through PTO shaft |
| <b>MAX SPEED:</b>                 | 3000 RPM  |
| <b>RATIO:</b>                     | 1:1 input to output<br>1.2 overspeed input to pump-pad  |
| <b>CENTER DISTANCE:</b>           | 33.44 inches input to output  |
| <b>ROTATION:</b>                  | Output stations rotate same direction as input  |
| <b>LUBRICATION:</b>               | Internal reservoir. Lube pump furnished.  |
| <b>SHIFTING:</b>                  | Air shift   |
| <b>OUTPUT SHAFT SIZE:</b>         | 2.75-10 straight side spline  |
| <b>COMMON OPTIONS:</b>            | SAE and ISO yokes and flanges, disconnects, pump pads, clutches, stub shaft   |
| <b>WEIGHT:</b>                    | Approximately 1200 lbs.   |

This drawing shows general arrangement and approximate space claim. Do not design, scale, or lay out using this drawing. Use only certified drawings provided by Cotta Engineering.



3/4-10 UNC THREAD  
 (4) PER SIDE FOR  
 GEARBOX MOUNTING



**TR2248 DRW.**