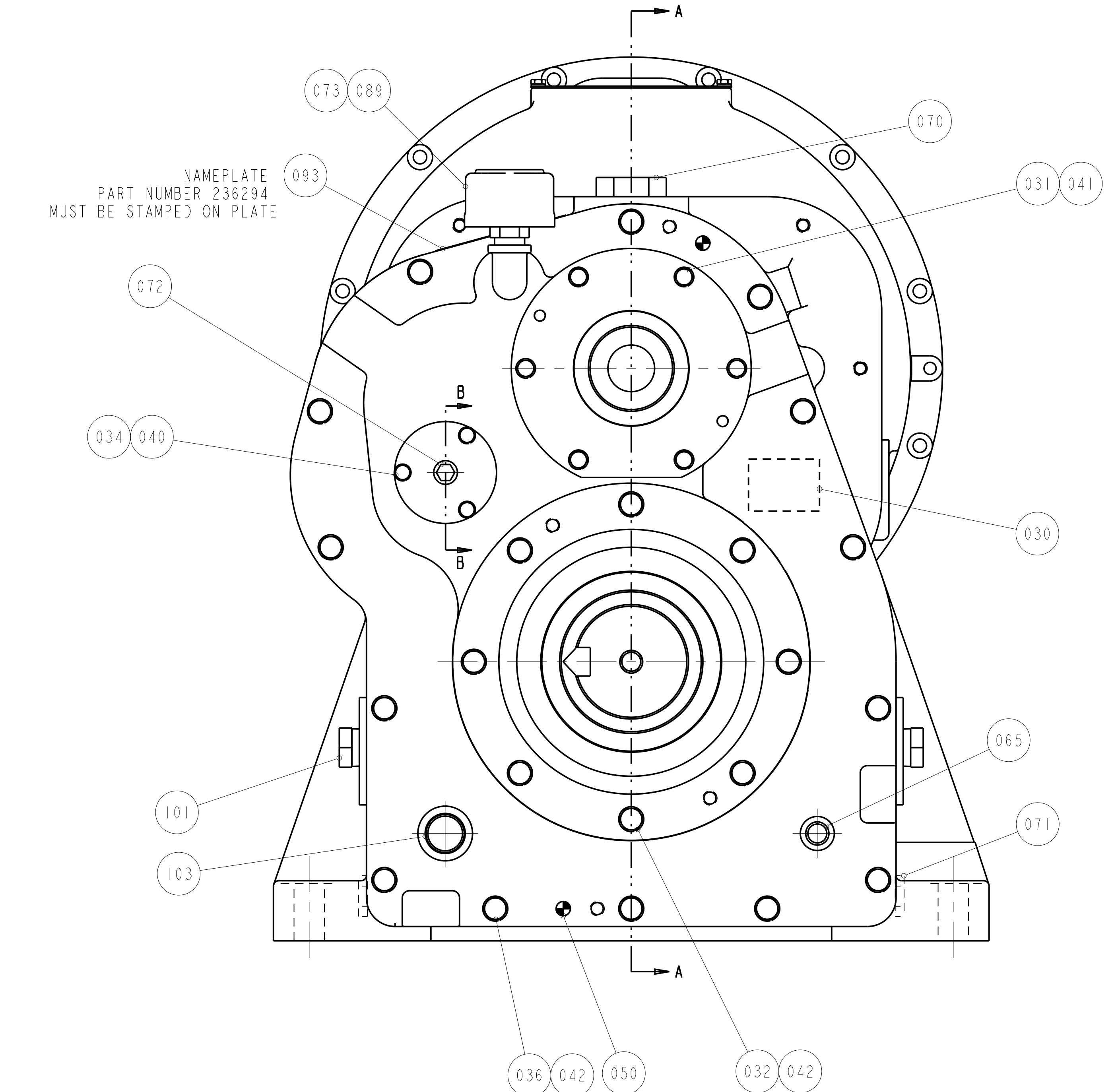
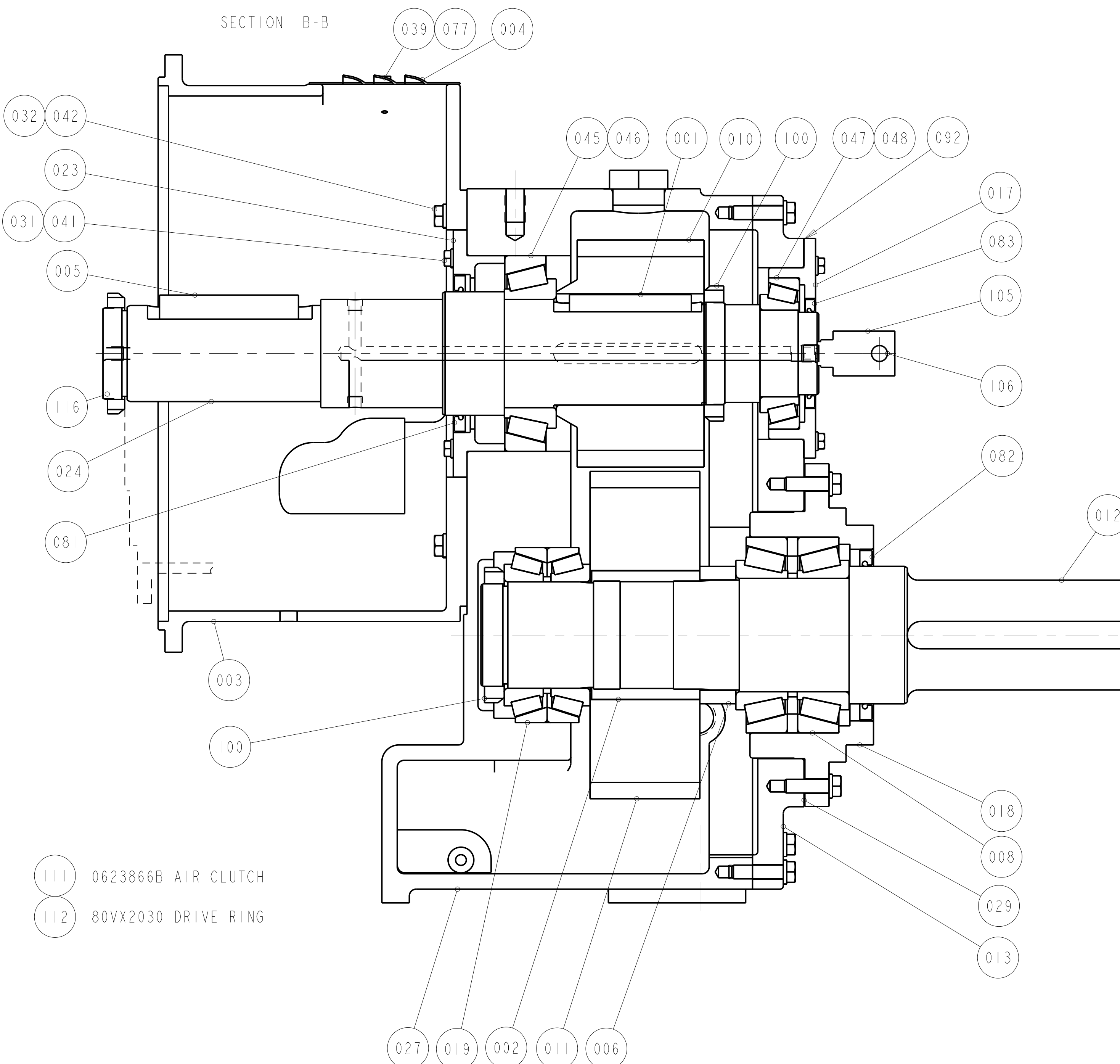
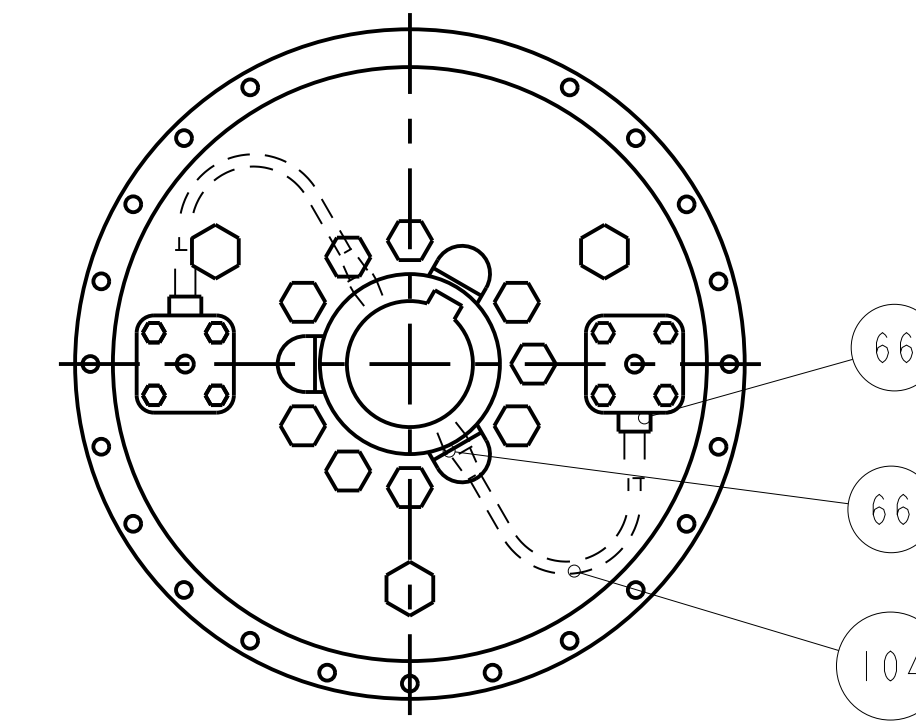
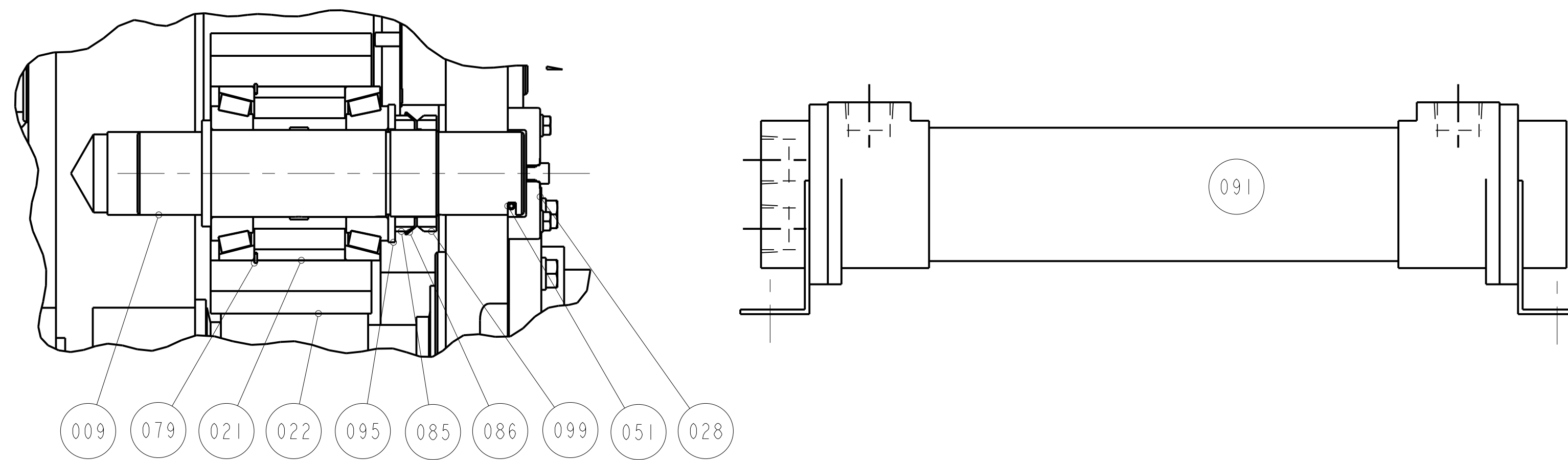


ENGINEERING CHANGE NOTICES				
LTR	DESCRIPTION	ECN	DATE	BY



- 111 0623866B AIR CLUTCH
- 112 80VX2030 DRIVE RING

NOT FOR PRODUCTION

TEST PER SPECIFICATION DE-9905. REFERENCES: DE-0801, TB01-101, DE-0102		REVISION DATE	
MODEL GR1600		30-MAR-23	
DRAWN TAP	DATE 30-MAR-23	PART NAME REDUCTION UNIT	
CHECKED XXX	DATE XX-XXX-XX		
APPROVED	DATE		
SCALE 0.375 SHEET 1 OF 1		PART NUMBER GR1600E-68	
DIMENSIONS ARE IN INCHES AND REFERENCE UNLESS TOLERANCED		Cotta 1301 PRINCE HALL DRIVE BELOIT, WI 53511	