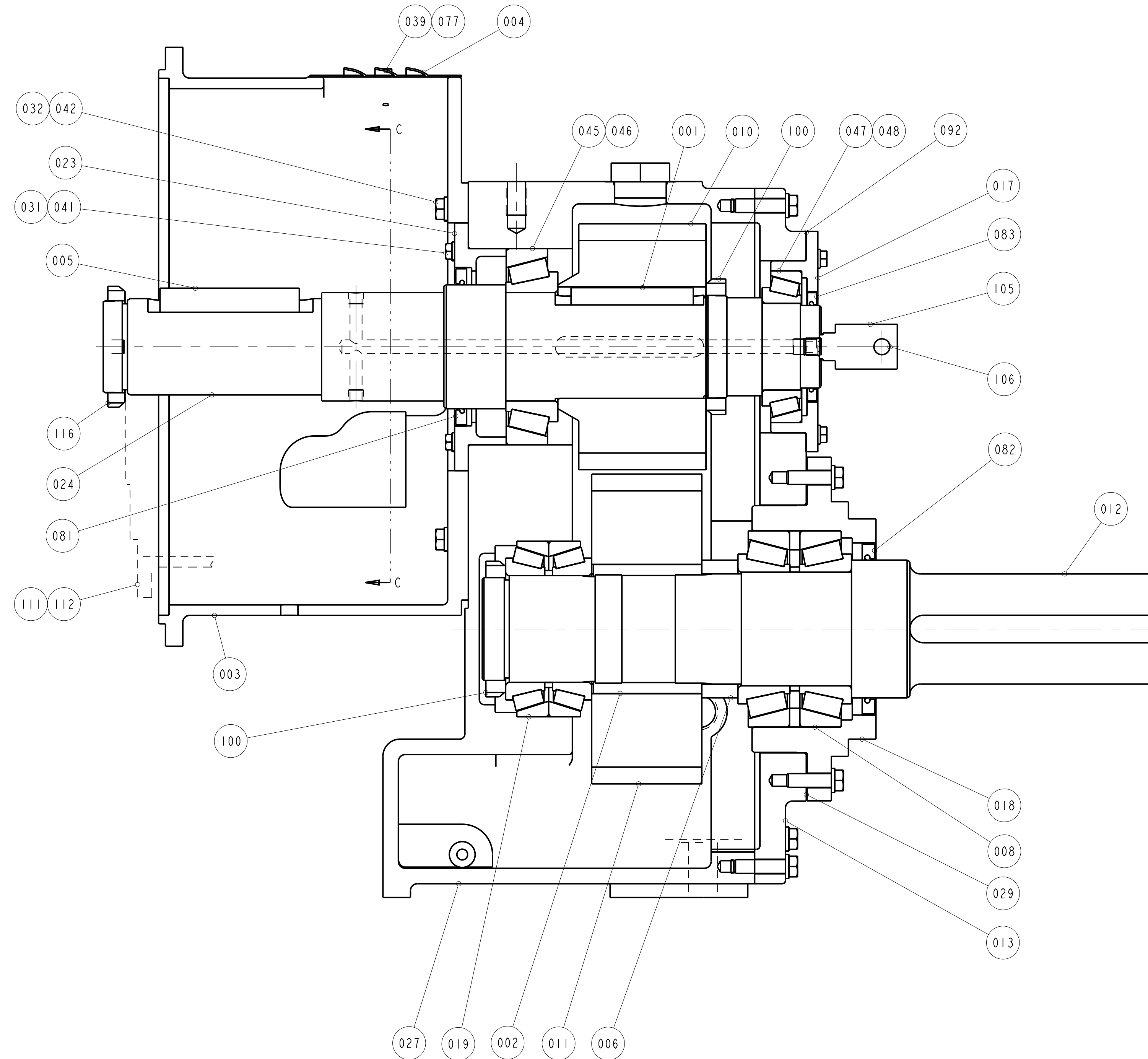
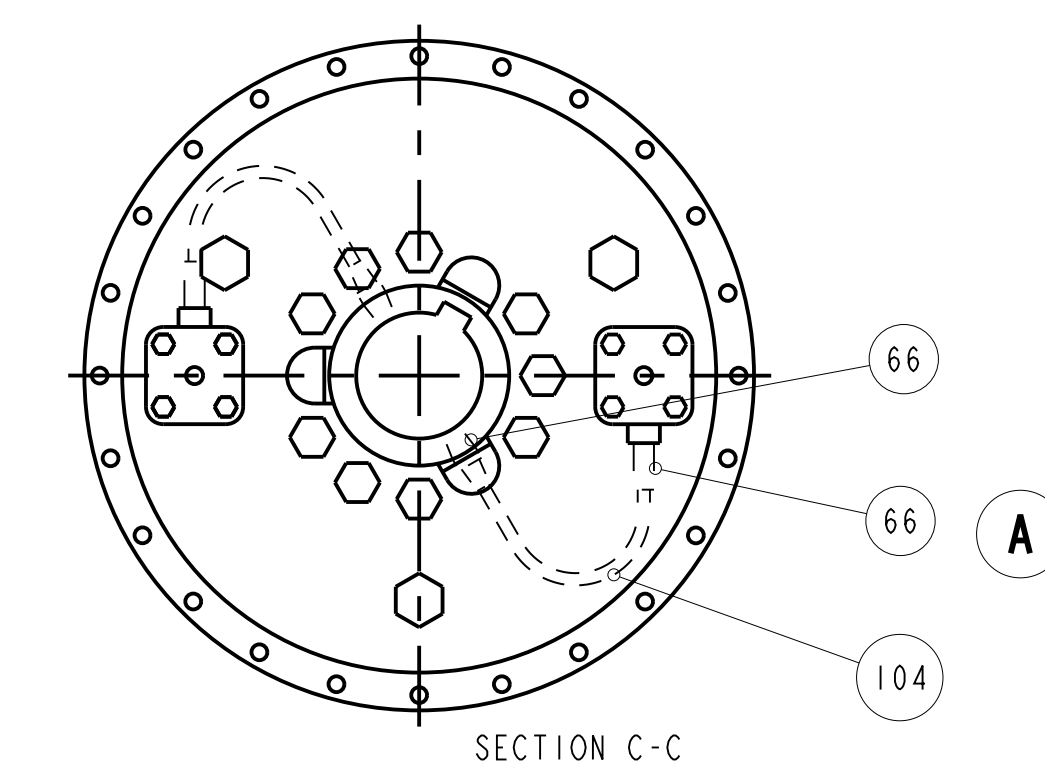
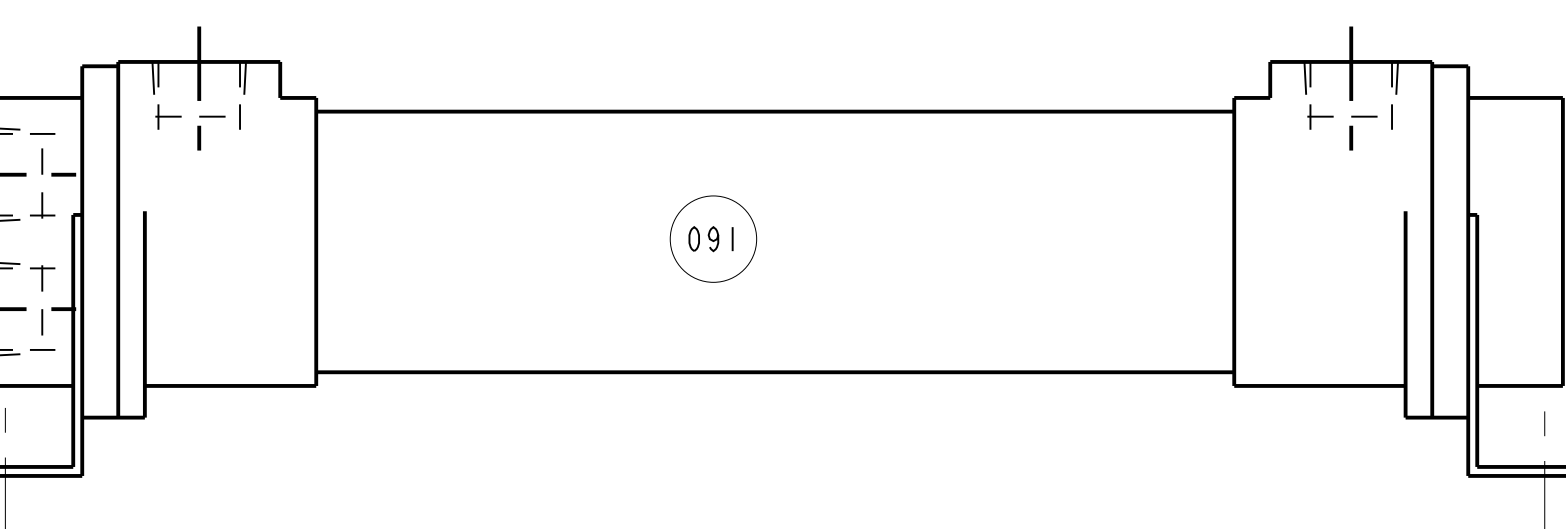
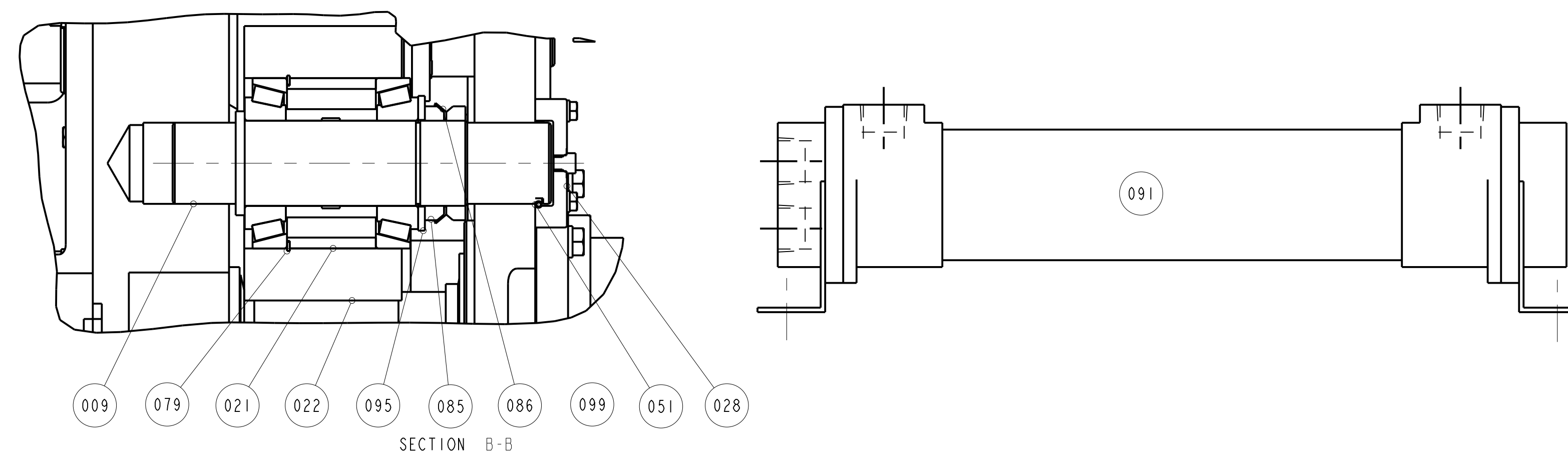
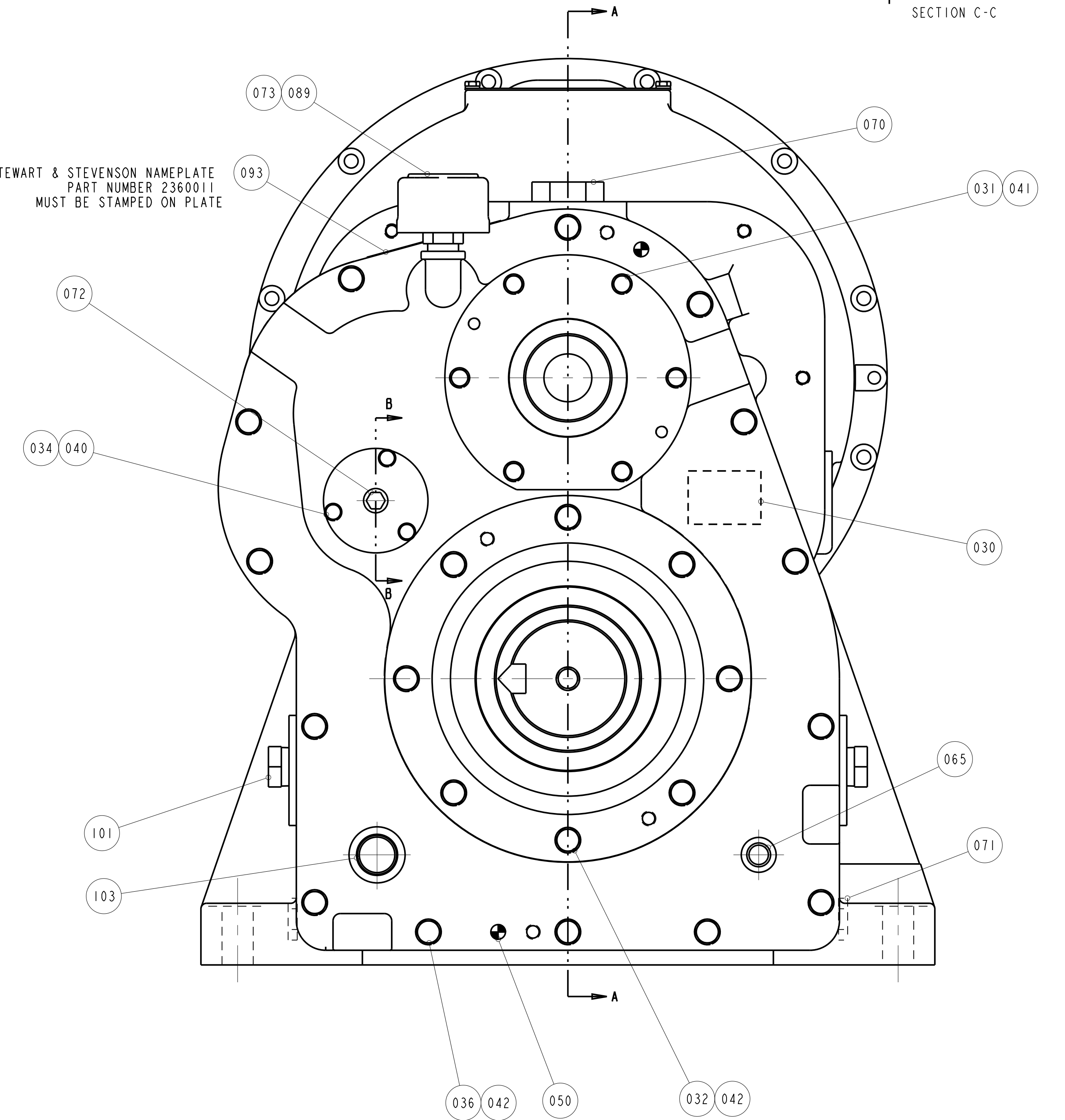


PROPRIETARY NOTICE: THIS DRAWING AND ALL INFORMATION THEREON IS THE PROPERTY OF COTTA, LLC. THIS DRAWING IS NOT TO BE COPIED OR USED FOR THE PURPOSE OF MANUFACTURING EXCEPT BY WRITTEN CONSENT OF COTTA, LLC. TORSIONAL VIBRATIONS EXIST IN ALL ROTATING SYSTEMS. IT IS THE SOLE RESPONSIBILITY OF THE EQUIPMENT MANUFACTURER OR ASSEMBLER TO INSURE THAT NO DAMAGING CRITICALS FALL IN THE OPERATING RANGE OF THE SYSTEM.

ENGINEERING CHANGE NOTICES				
LTR	DESCRIPTION	ECN	DATE	BY




STEWART & STEVENSON NAMEPLATE
PART NUMBER 2360011
MUST BE STAMPED ON PLATE



NOT FOR PRODUCTION

UNLESS OTHERWISE NOTED
1. USE STANDARD CAPSCREW TIGHTENING TORQUES
APPLYING LOCTITE 242 OR EQUIVALENT.

TEST PER SPECIFICATION DE-9905. REFERENCES: DE-0801, TB01-101, DE-0102		REVISION DATE 30-MAR-23	
MODEL GRI600		 Cotta 1301 PRINCE HALL DRIVE BELOIT, WI 53511	
DRAWN TAP	DATE MAR-30-23	PART NAME	
CHECKED XXX	DATE XXX-XX-XX	REDUCTION UNIT	
APPROVED	DATE		
SCALE 0.375	SHEET 1 OF 1	PART NUMBER GRI600F-77	
DIMENSIONS ARE IN INCHES AND			