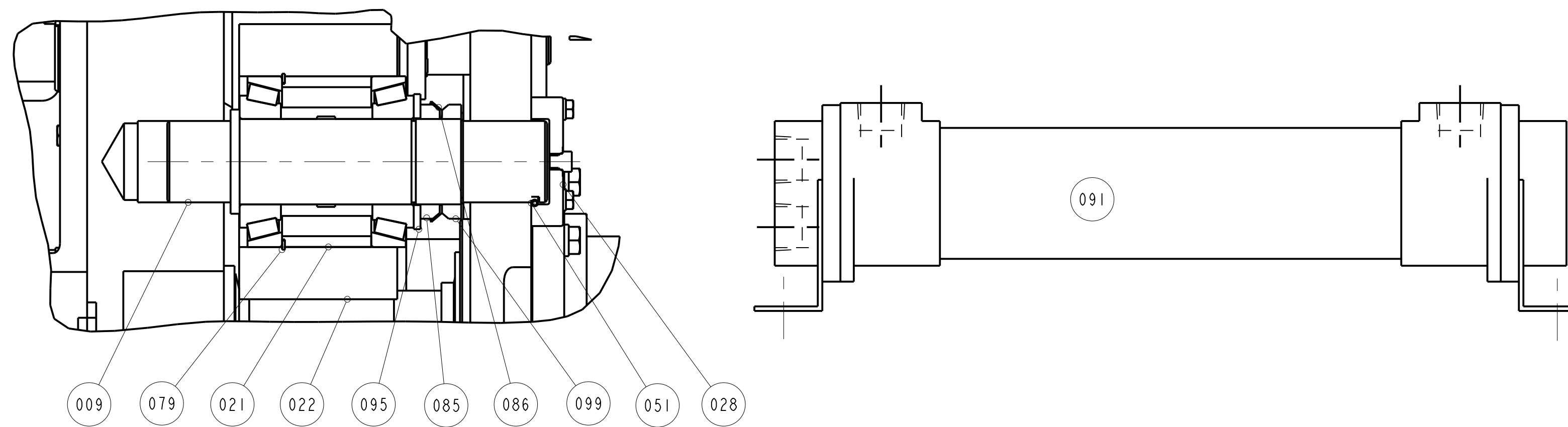
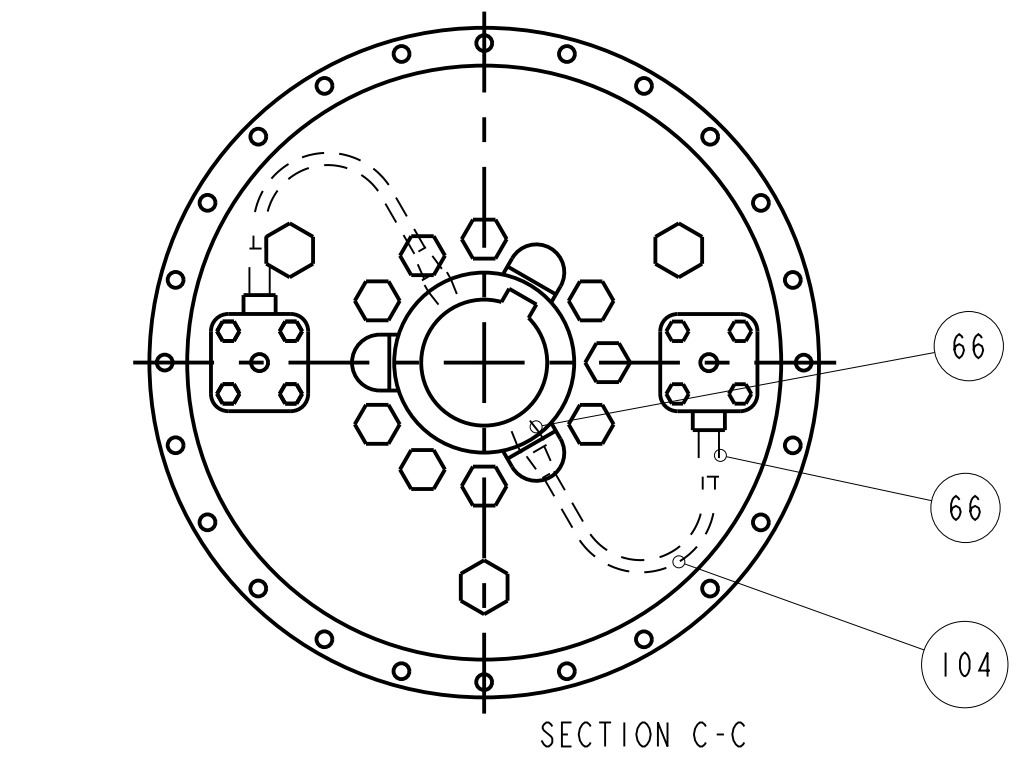


PROPRIETARY NOTICE: THIS DRAWING AND ALL INFORMATION THEREON IS THE PROPERTY OF COTTA, LLC. THIS DRAWING IS NOT TO BE COPIED OR USED FOR THE PURPOSE OF MANUFACTURING EXCEPT BY WRITTEN CONSENT OF COTTA, LLC. TORSIONAL VIBRATIONS EXIST IN ALL ROTATING SYSTEMS. IT IS THE SOLE RESPONSIBILITY OF THE EQUIPMENT MANUFACTURER OR ASSEMBLER TO INSURE THAT NO DAMAGING CRITICALS FALL IN THE OPERATING RANGE OF THE SYSTEM.

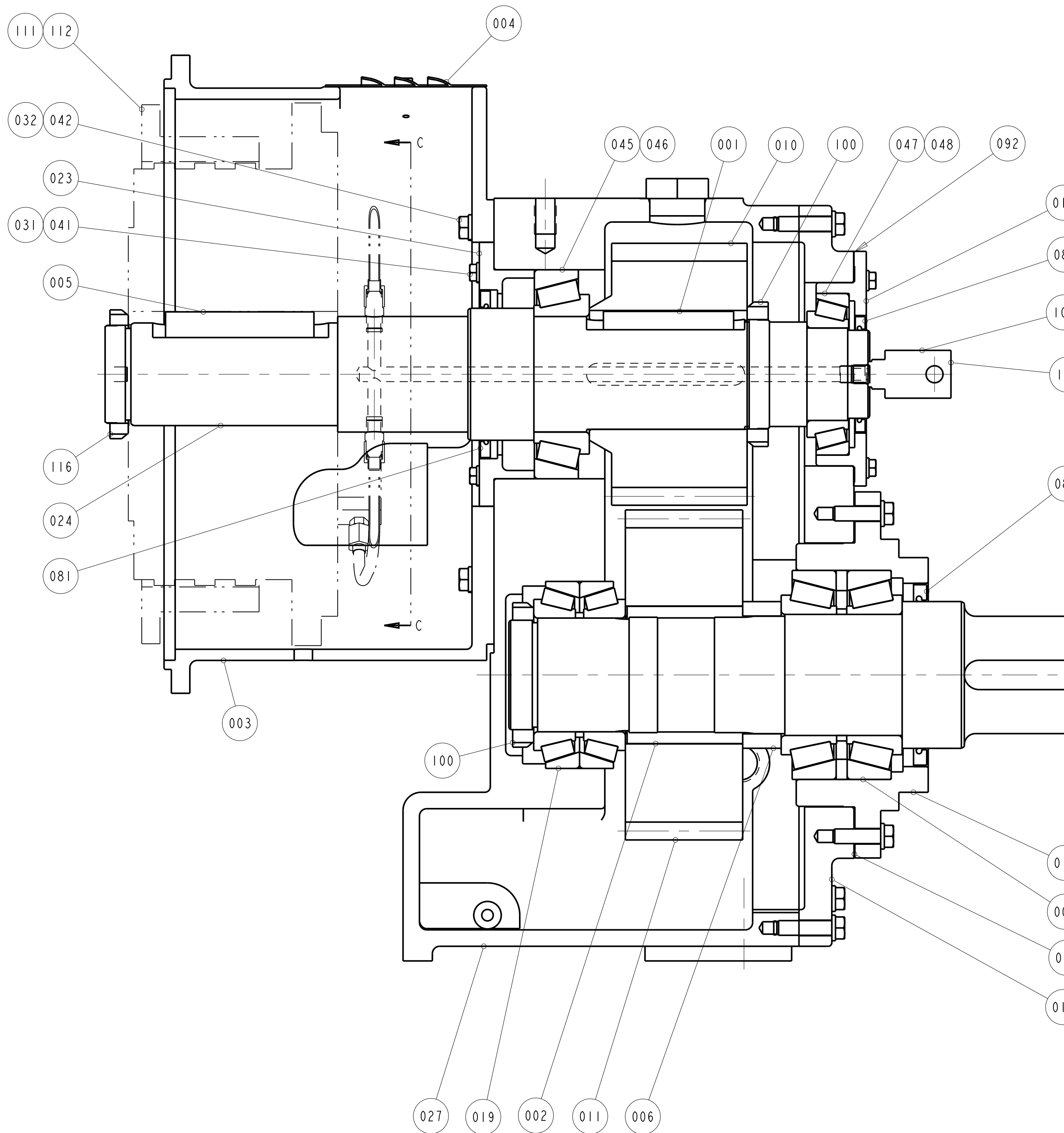
ENGINEERING CHANGE NOTICES				
LTR	DESCRIPTION	ECN	DATE	BY



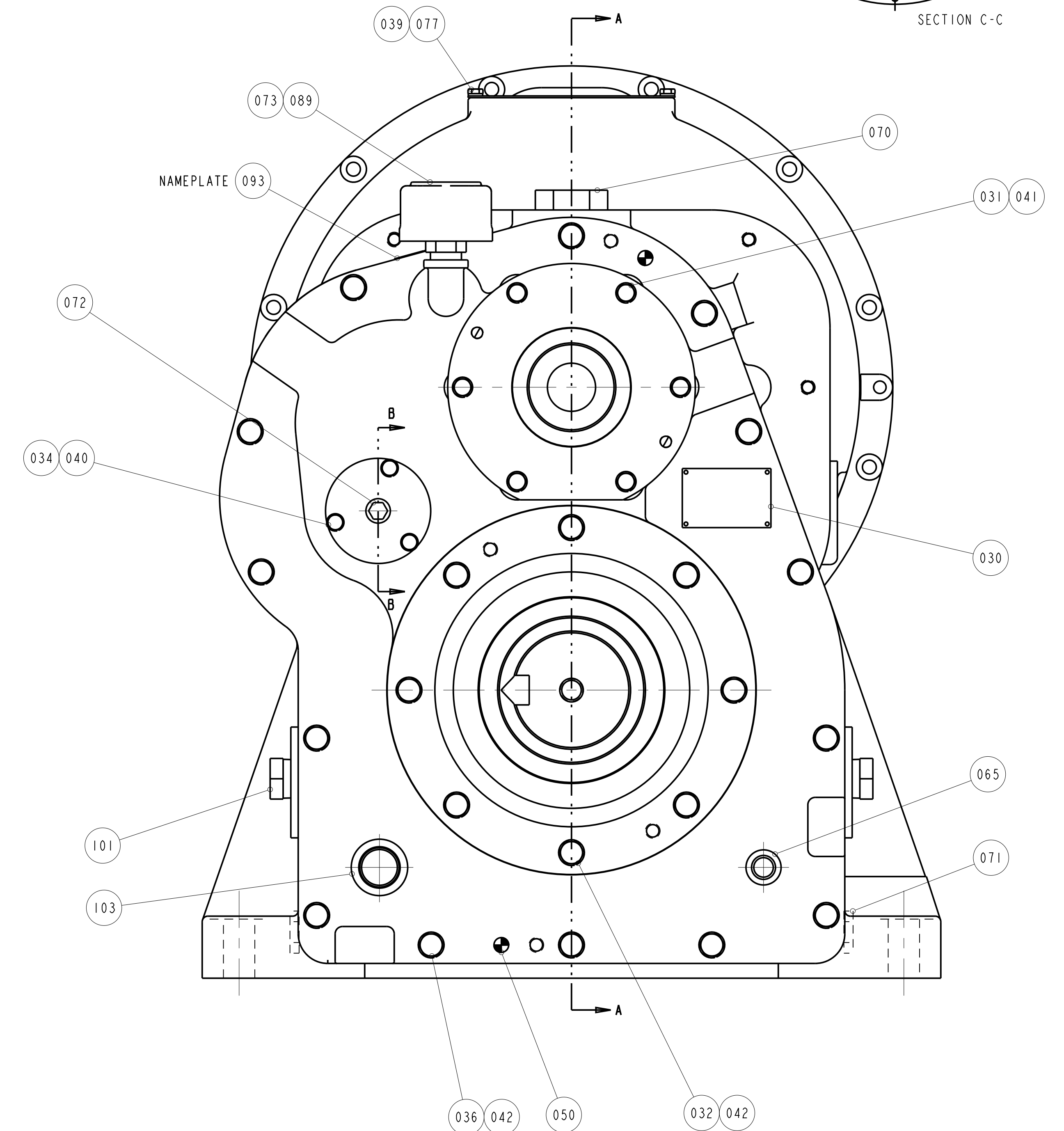
SECTION B-B



SECTION C-C




SECTION A-A



NOT FOR PRODUCTION

UNLESS OTHERWISE NOTED
1. USE STANDARD CAPSCREW TIGHTENING TORQUES
APPLYING LOCTITE 242 OR EQUIVALENT.

TEST PER SPECIFICATION DE-9905. REFERENCES: DE-0801, TB01-101, DE-0102				REVISION DATE 30-MAR-23
MODEL GR1600		 Cotta		1301 PRINCE HALL DRIVE BELOIT, WI 53511
DRAWN TAP	DATE 30-MAR-23	PART NAME REDUCTION UNIT		
CHECKED XXX	DATE XX-XXX-XX			
APPROVED	DATE	PART NUMBER GR1600E-87		
SCALE 0.375	SHEET 1 OF 1			
DIMENSIONS ARE IN INCHES AND REFERENCE UNLESS TOLERANCED				

Cotta

1301 PRINCE HALL DRIVE
BELOIT, WI 53511