
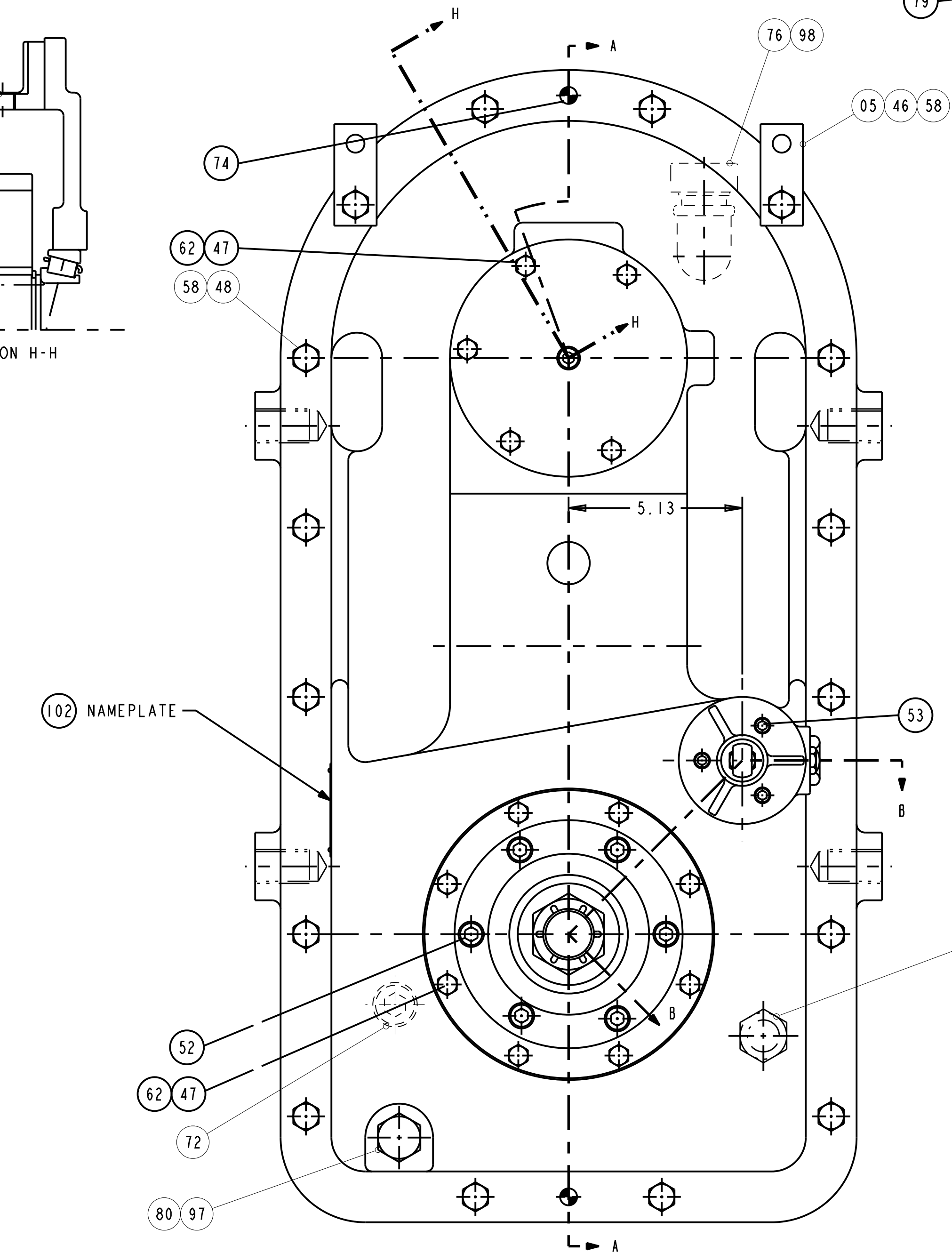
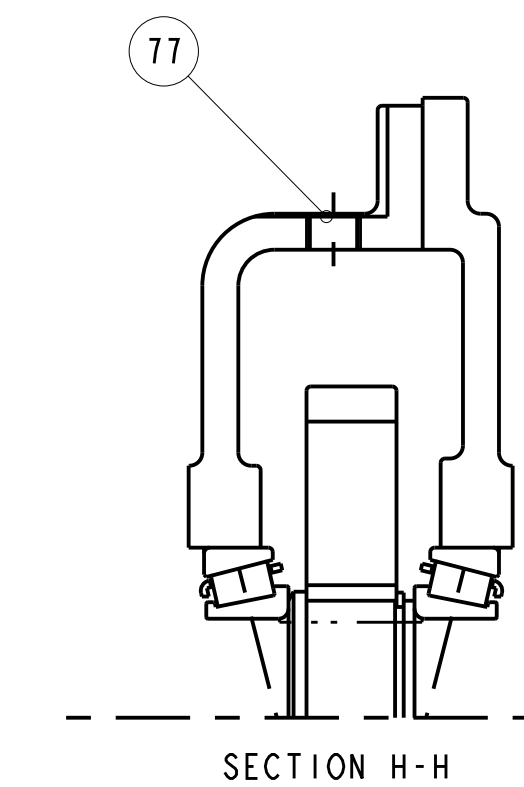
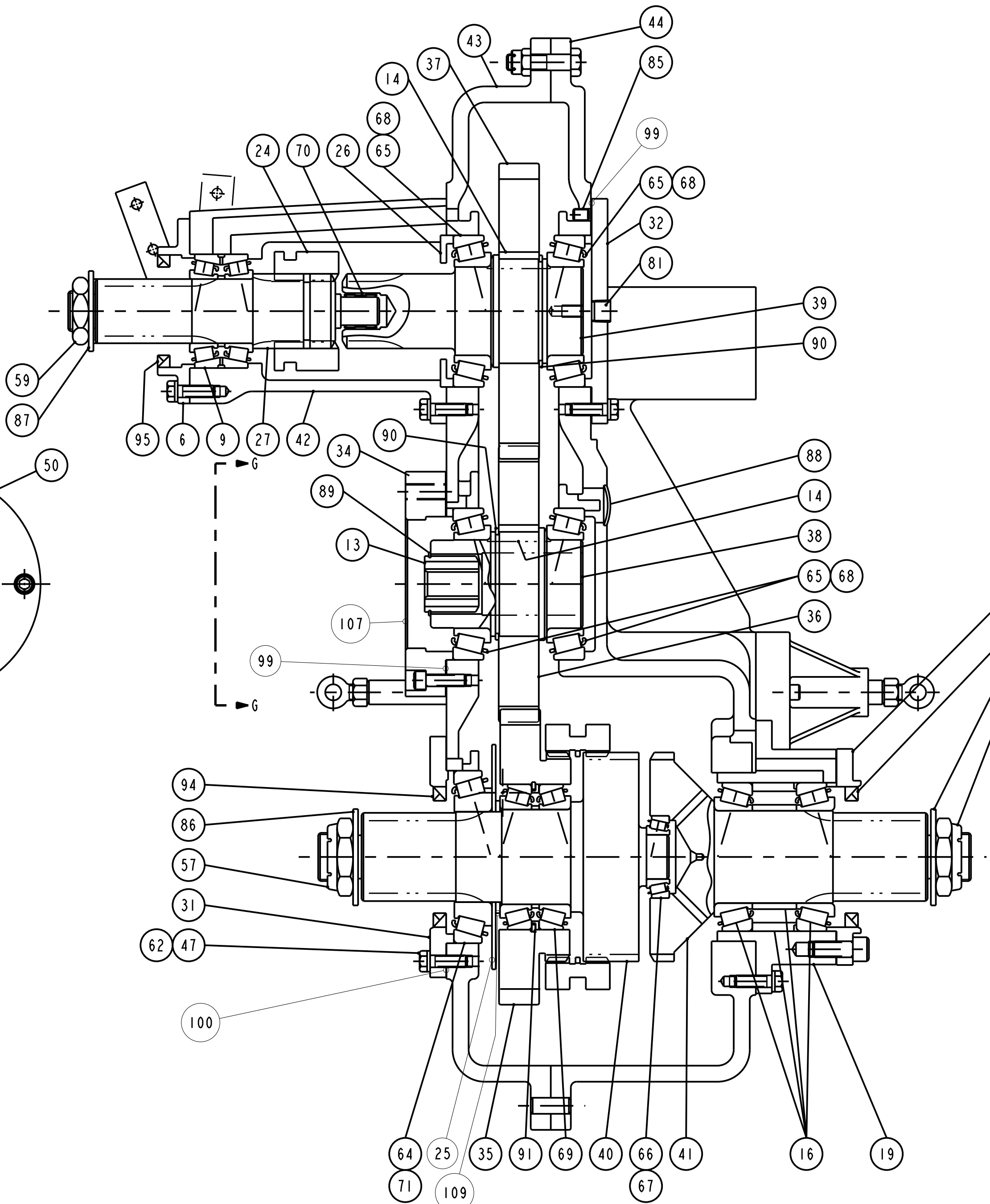
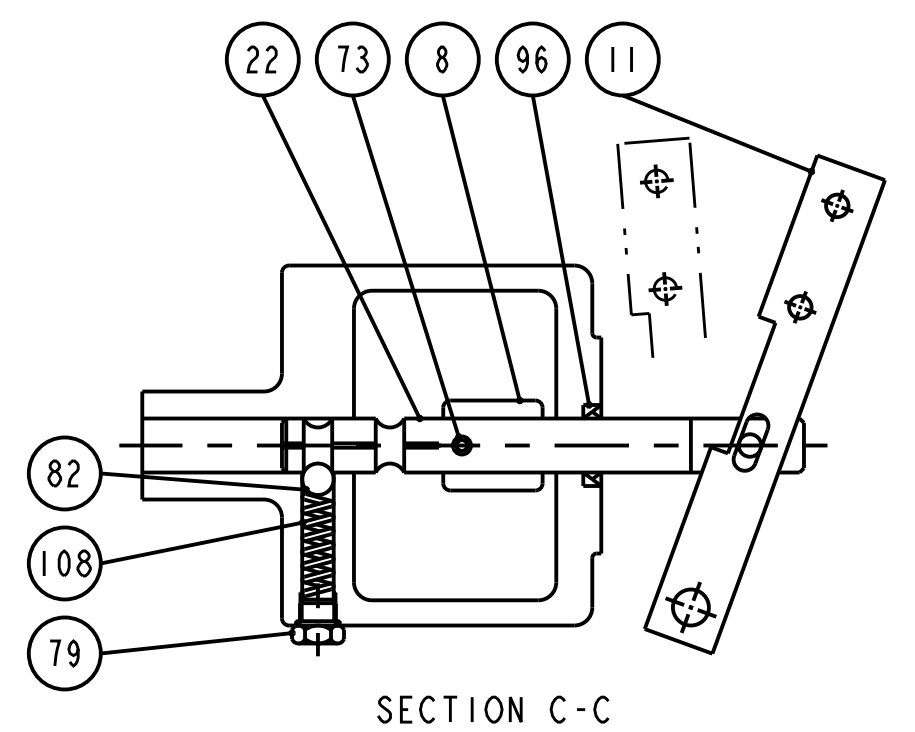
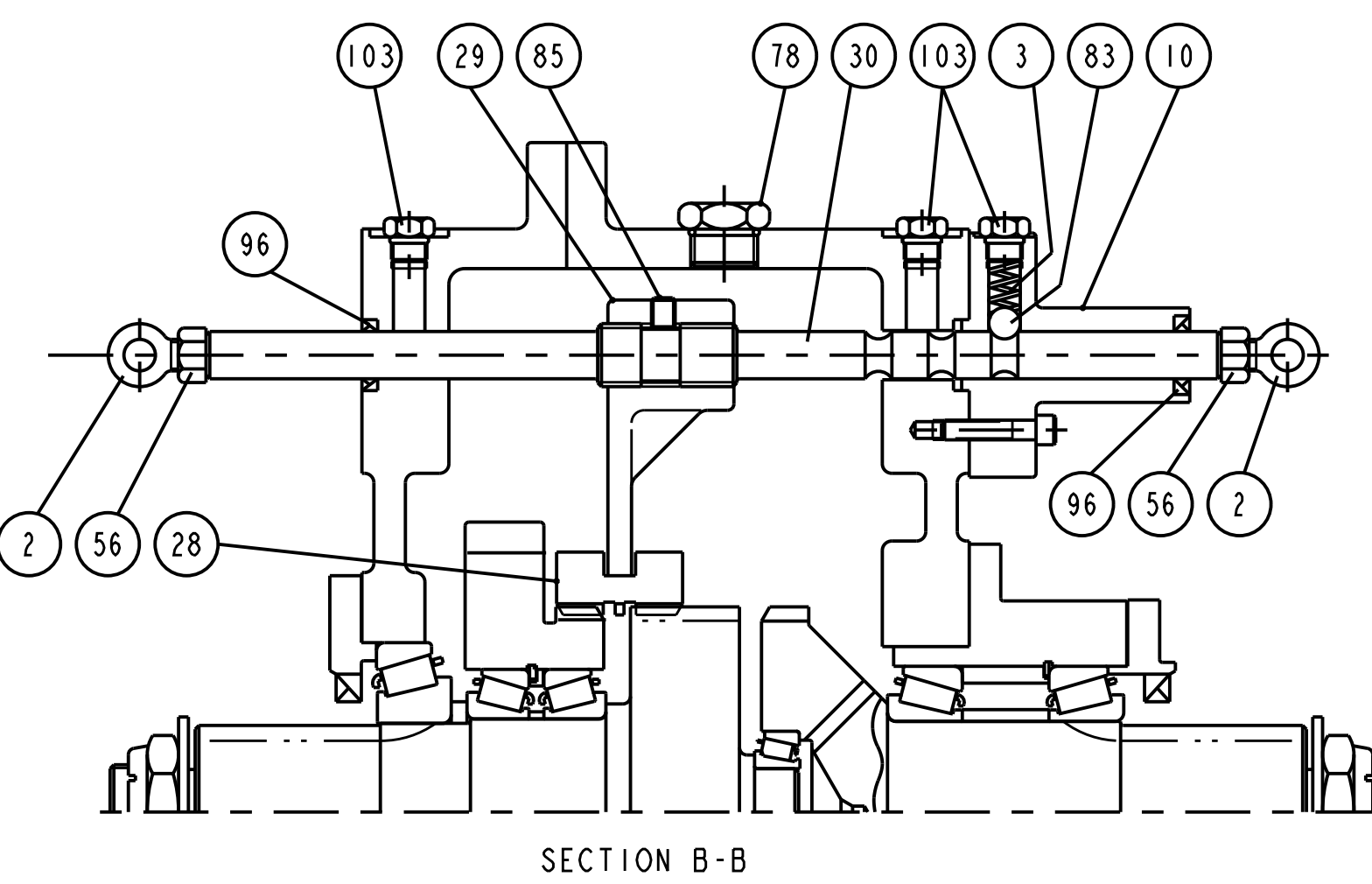


UNLESS OTHERWISE NOTED
1. USE STANDARD CAPSCREW TIGHTENING TORQUES
APPLYING LOCTITE 242 OR EQUIVALENT.

TEST PER SPECIFICATION DE-9905. REFERENCES: DE-0801, TB01-101, DE-0102				REVISION DATE 31-MAR-23	
MODEL TR2059			 Cotta		1301 PRINCE HALL DRIVE BELLOIT, WI 53511
DRAWN CHECKED APPROVED SCALE	TAP - 3/8	DATE 31-MAR-23 DATE - SHEETS OF 1	PART NAME SPLIT SHAFT PTO PART NUMBER TR2059-3B		
DIMENSIONS ARE IN INCHES AND TOLERANCES UNLESS OTHERWISE SPECIFIED					



NOT FOR PRODUCTION