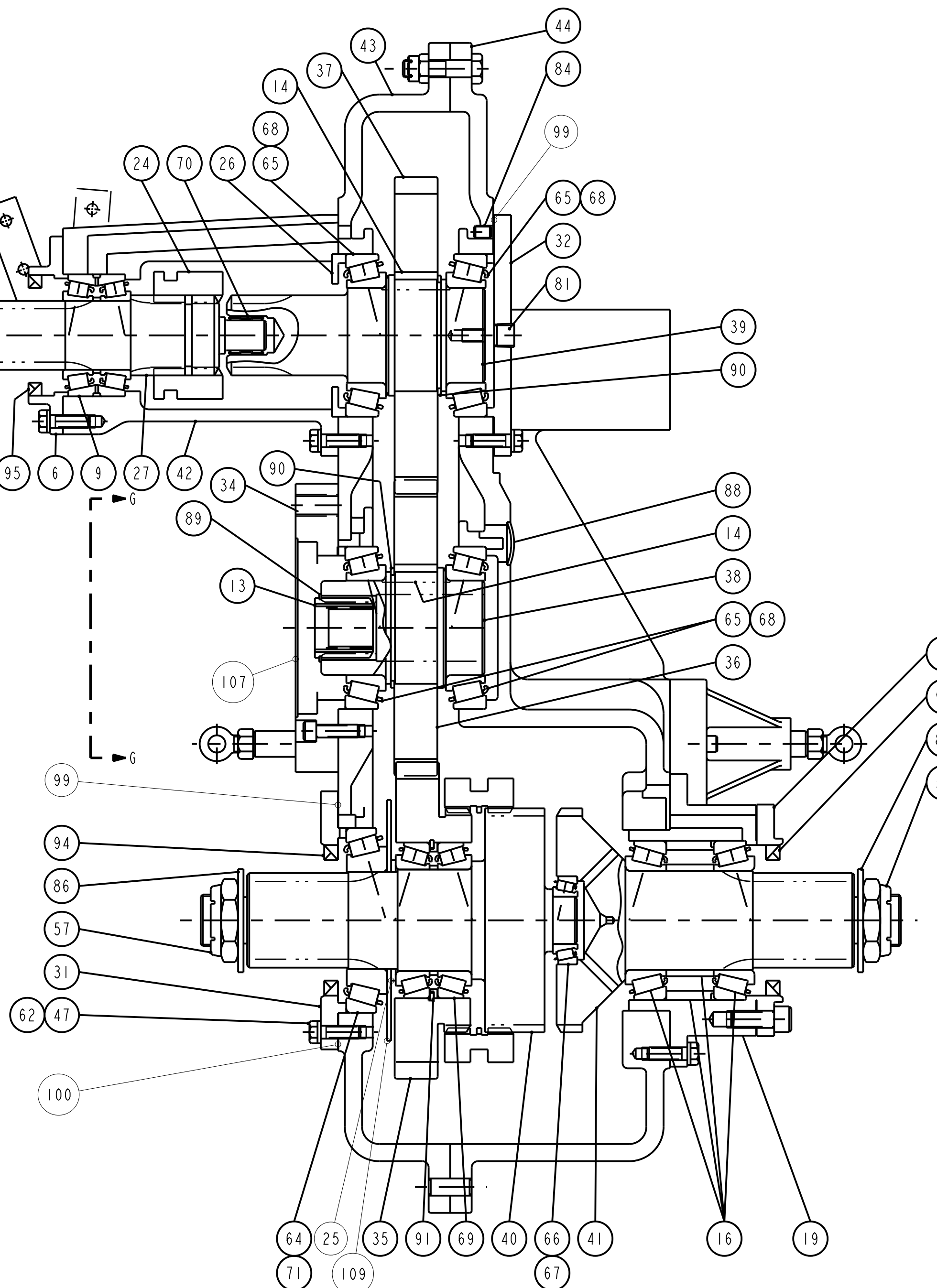
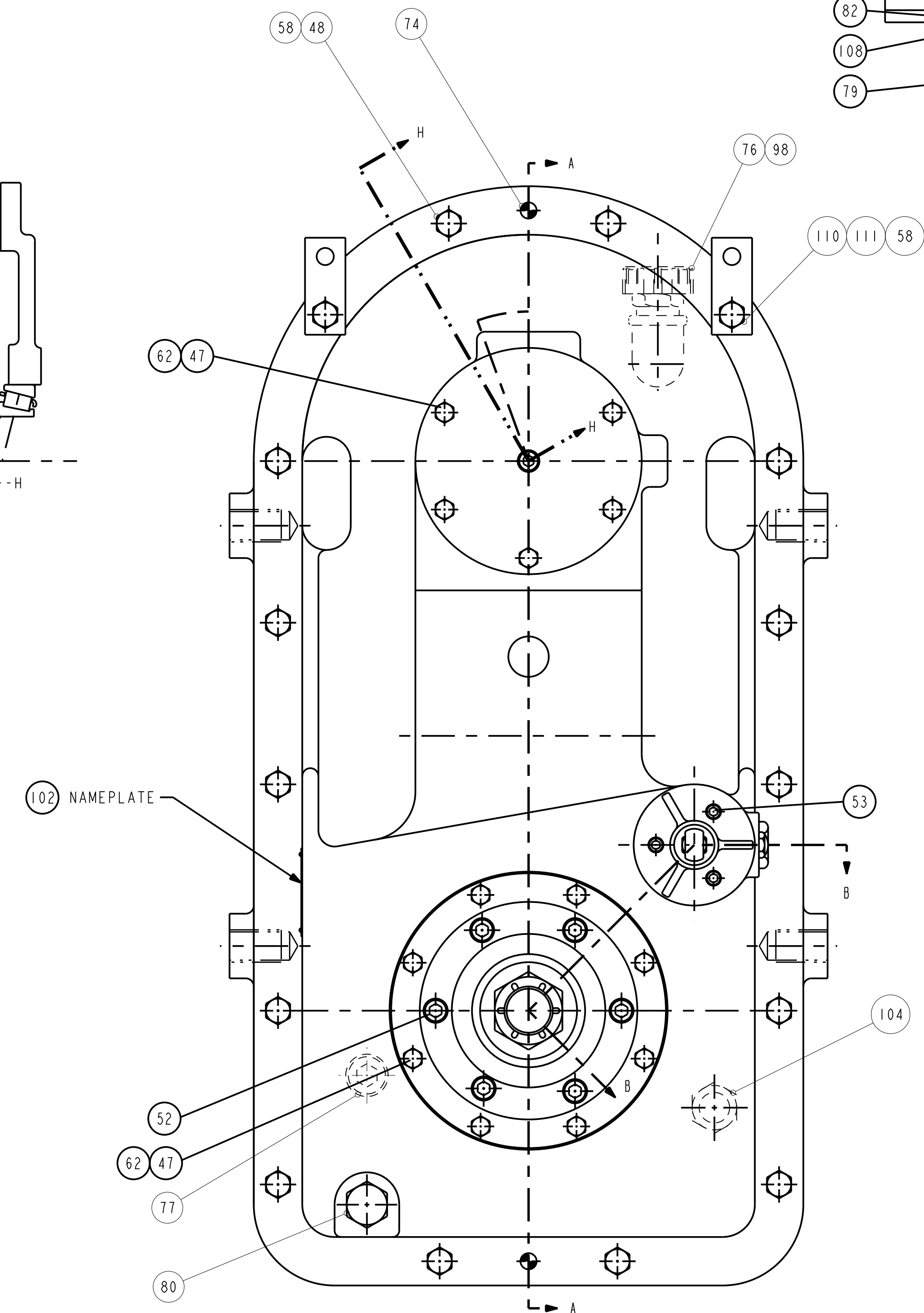
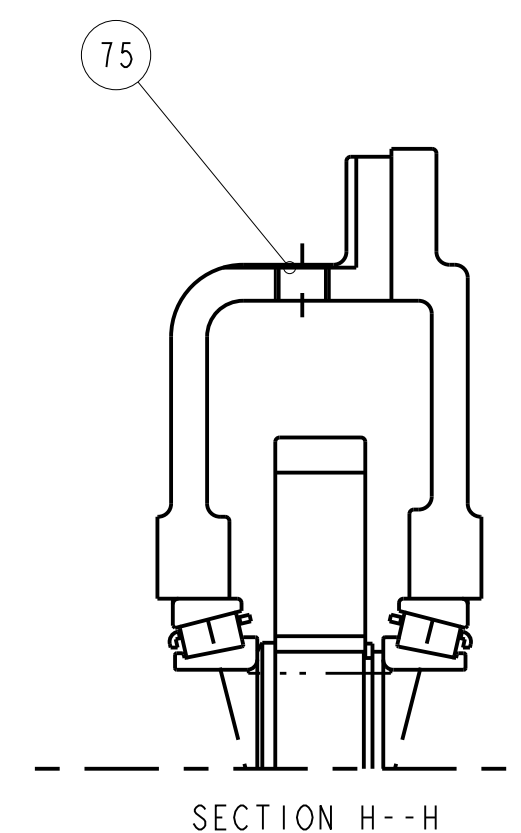
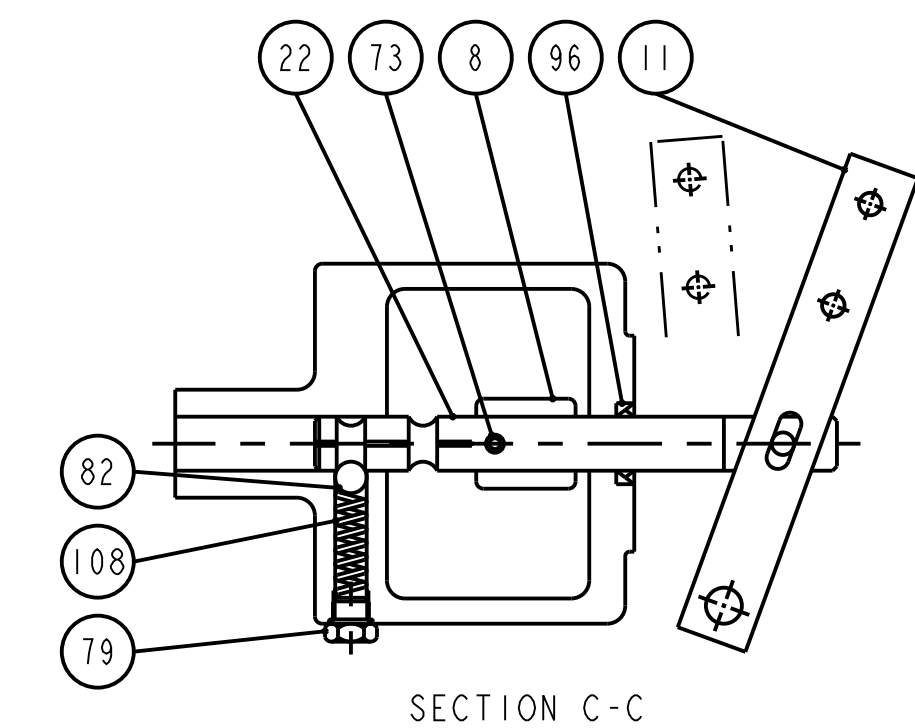
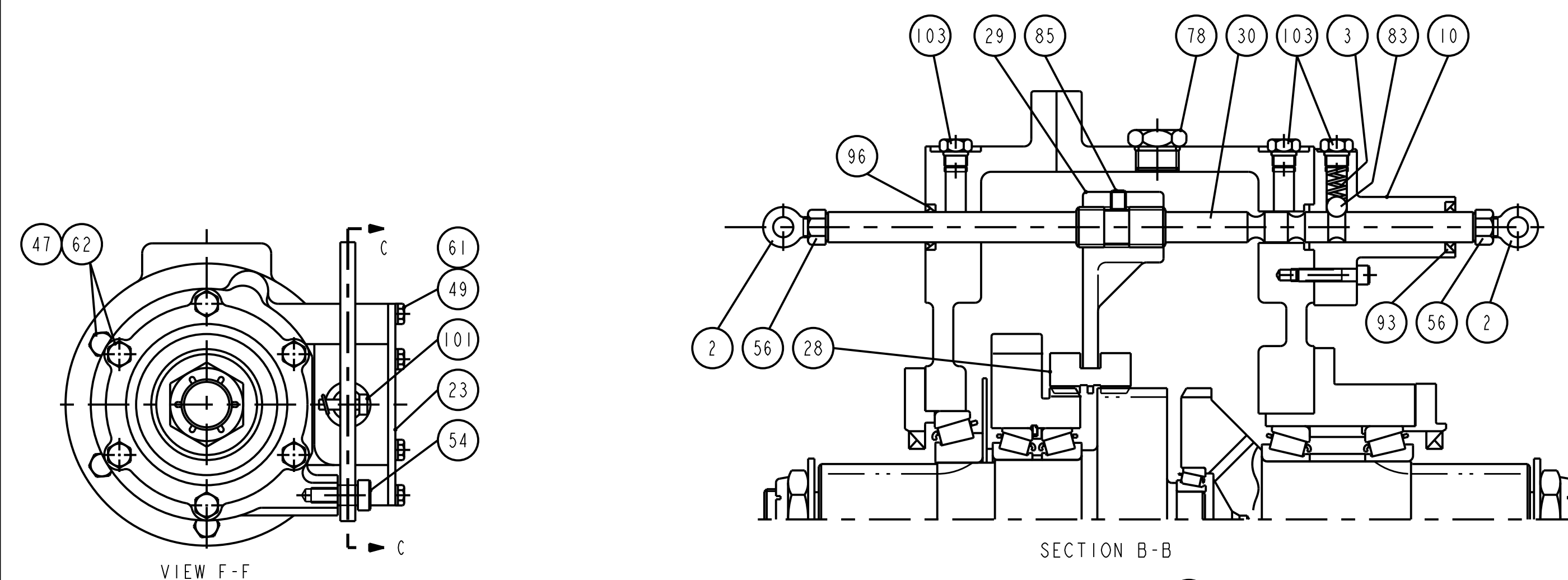



PROPRIETARY NOTICE: THIS DRAWING AND ALL INFORMATION THEREON IS THE PROPERTY OF COTTA, LLC. THIS DRAWING IS NOT TO BE COPIED OR USED FOR THE PURPOSE OF MANUFACTURING EXCEPT BY WRITTEN CONSENT OF COTTA, LLC. TORSIONAL VIBRATIONS EXIST IN ALL ROTATING SYSTEMS. IT IS THE SOLE RESPONSIBILITY OF THE EQUIPMENT MANUFACTURER OR ASSEMBLER TO INSURE THAT NO DAMAGING CRITICALS FALL IN THE OPERATING RANGE OF THE SYSTEM.

ENGINEERING CHANGE NOTICES				
LTR	DESCRIPTION	ECN	DATE	BY



NOT FOR PRODUCTION

UNLESS OTHERWISE NOTED
1. USE STANDARD CAPSCREW TIGHTENING TORQUES
APPLYING LOCTITE 242 OR EQUIVALENT.

TEST PER SPECIFICATION DE-9905. REFERENCES: DE-0801, TB01-101, DE-0102				REVISION DATE 31-MAR-23	
MODEL	TR2059			 1301 PRINCE HALL DRIVE BELOIT, WI 53511	
DRAWN	TAP	DATE	31-MAR-23		
CHECKED	XXX	DATE	XX-XXX-XX		
APPROVED		DATE			
SCALE 3" = 8" SHEET 1 OF 1				PART NAME	TRANSFER CASE
DIMENSIONS ARE IN INCHES AND REFERENCE UNLESS TOLERANCED				PART NUMBER	TR2059-59