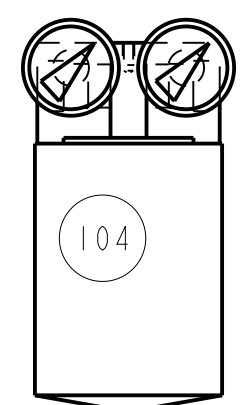
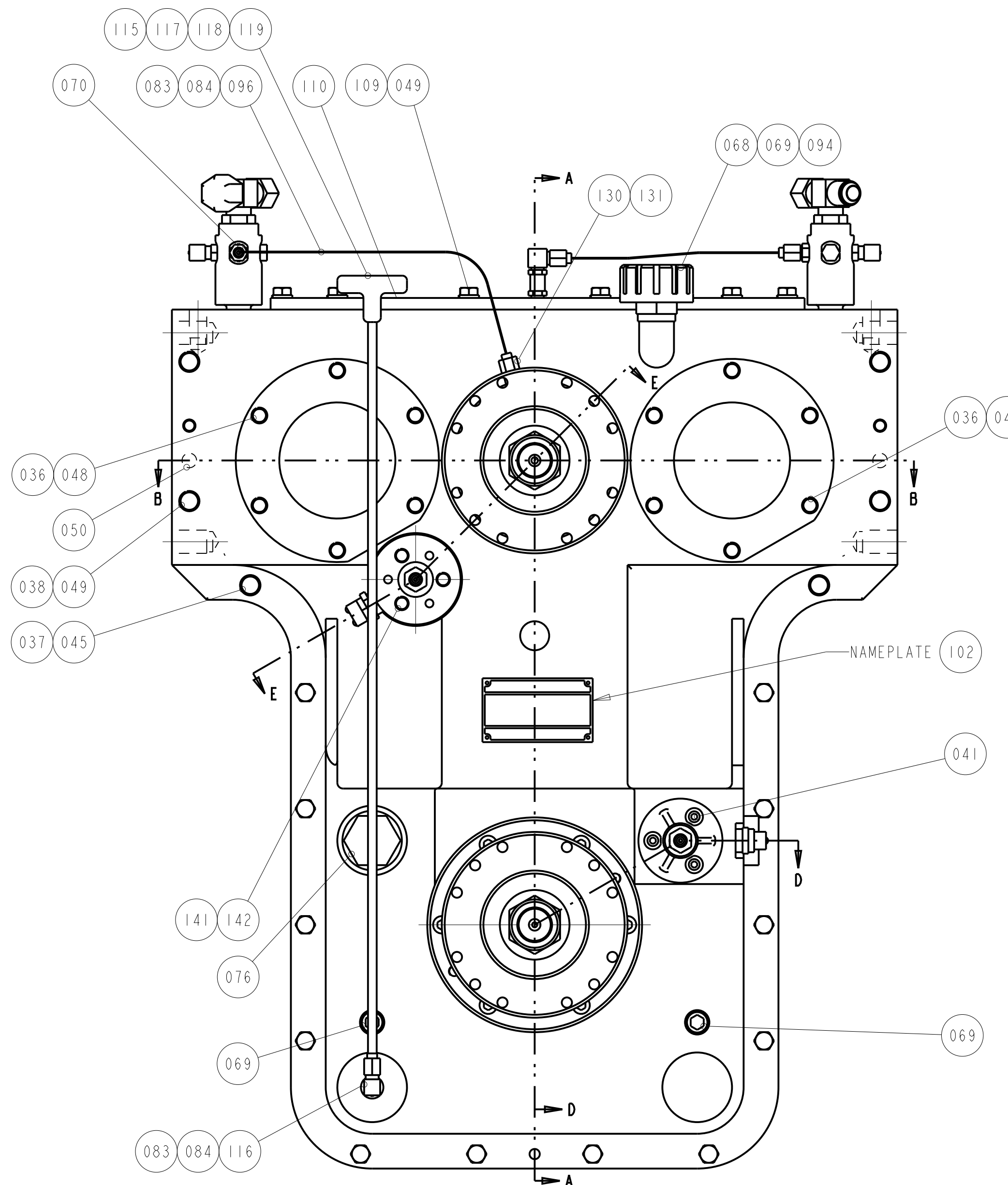
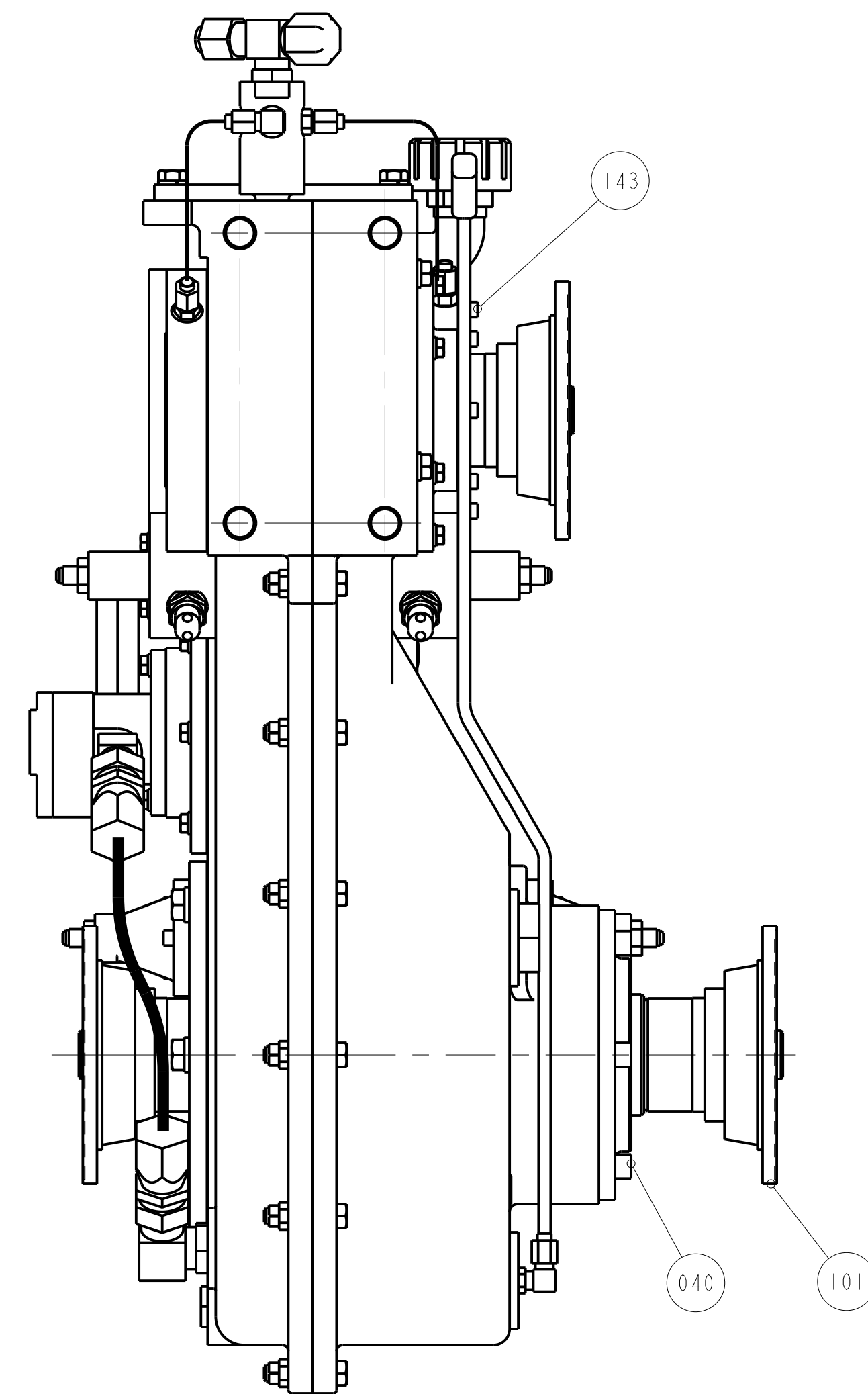
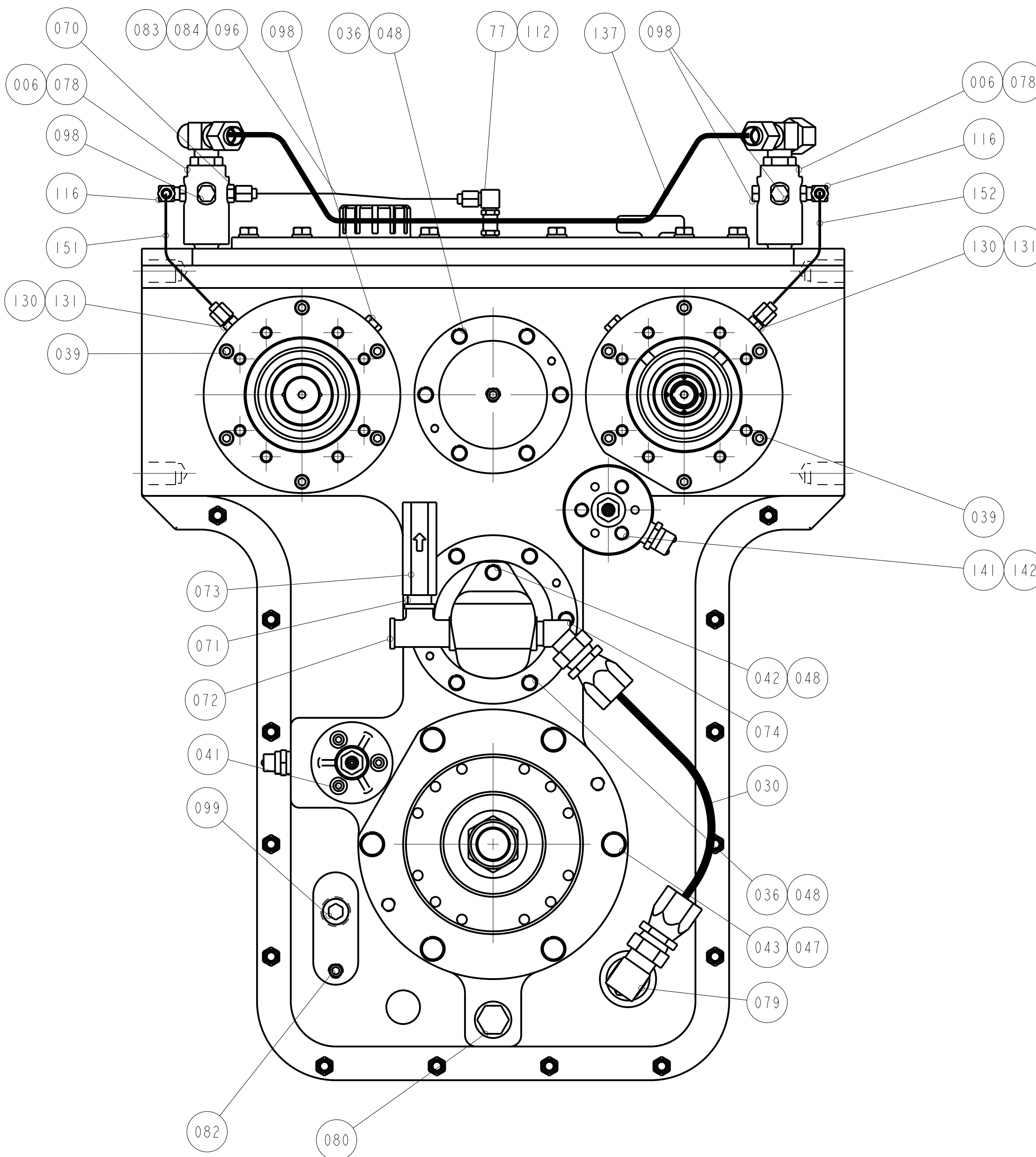
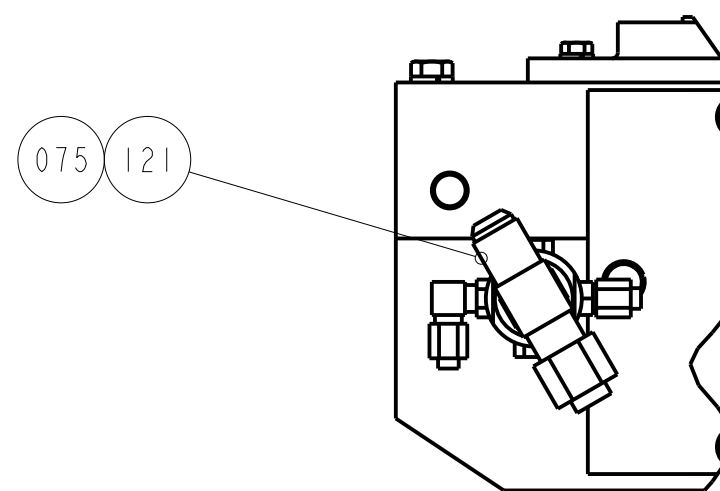



PROPRIETARY NOTICE: THIS DRAWING AND ALL INFORMATION THEREON IS THE PROPERTY OF COTTA, LLC. THIS DRAWING IS NOT TO BE COPIED OR USED FOR THE PURPOSE OF MANUFACTURING EXCEPT BY WRITTEN CONSENT OF COTTA, LLC. TORSIONAL VIBRATIONS EXIST IN ALL ROTATING SYSTEMS. IT IS THE SOLE RESPONSIBILITY OF THE EQUIPMENT MANUFACTURER OR ASSEMBLER TO INSURE THAT NO DAMAGING CRITICALS FALL IN THE OPERATING RANGE OF THE SYSTEM.

ENGINEERING CHANGE NOTICES				
LTR	DESCRIPTION	ECN	DATE	BY



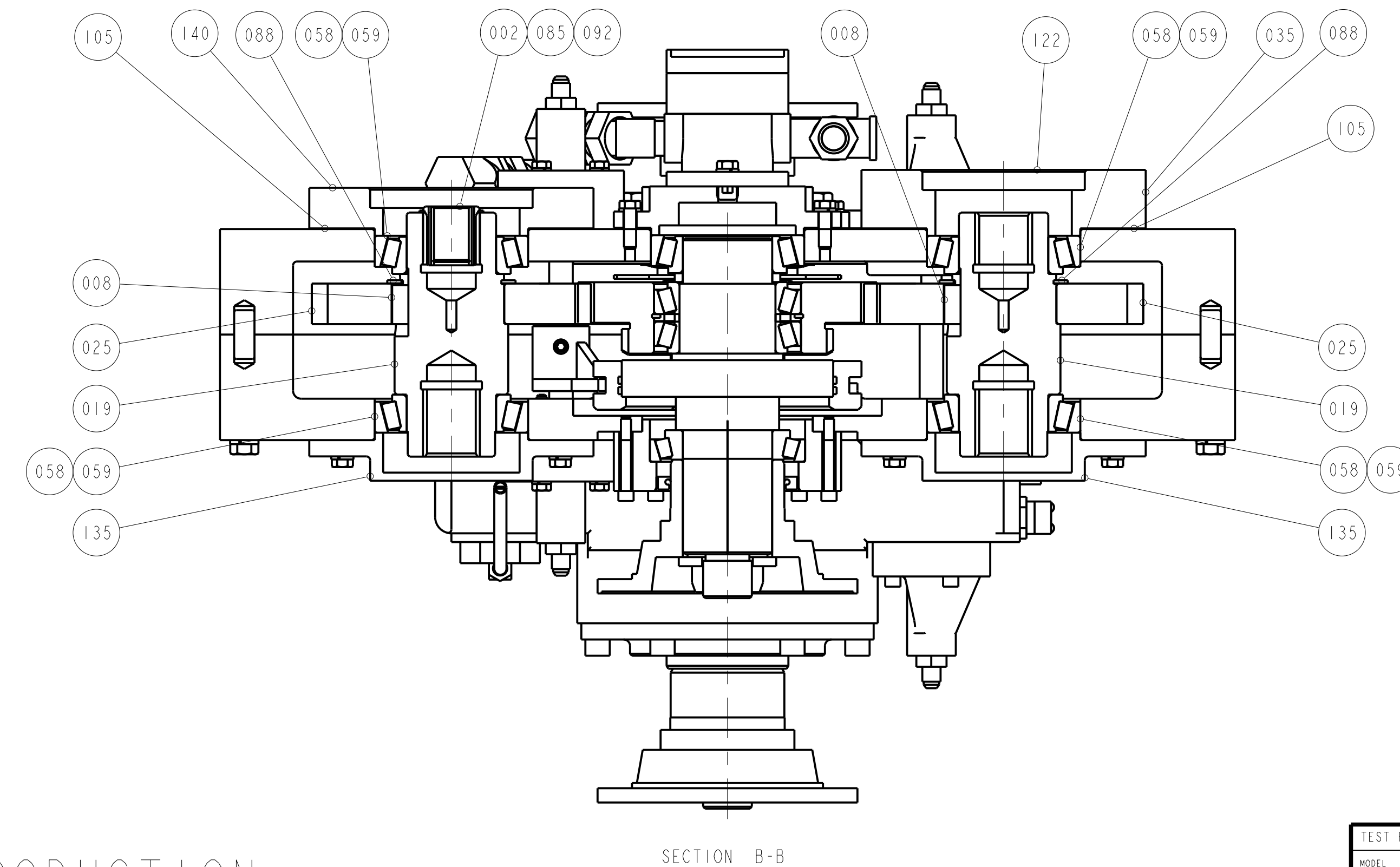
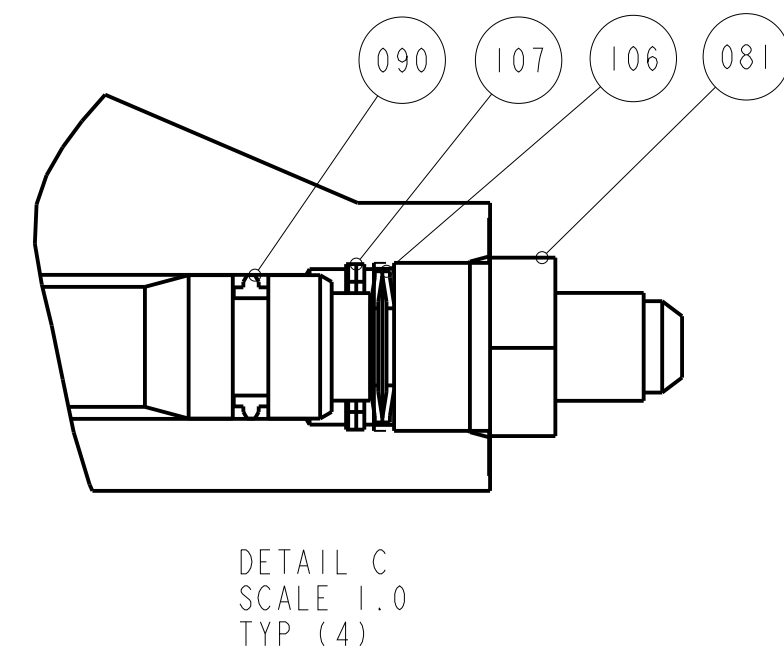
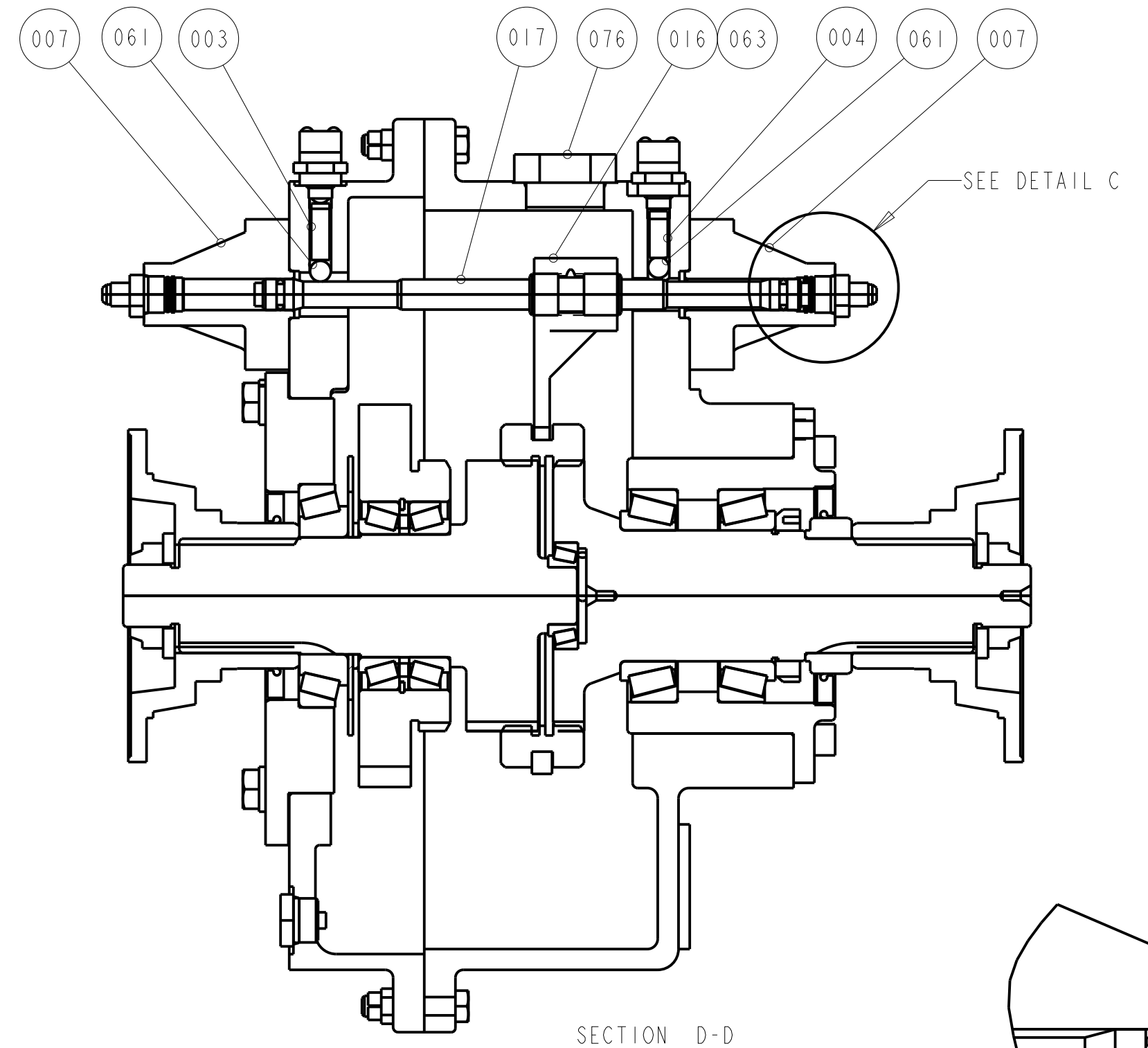
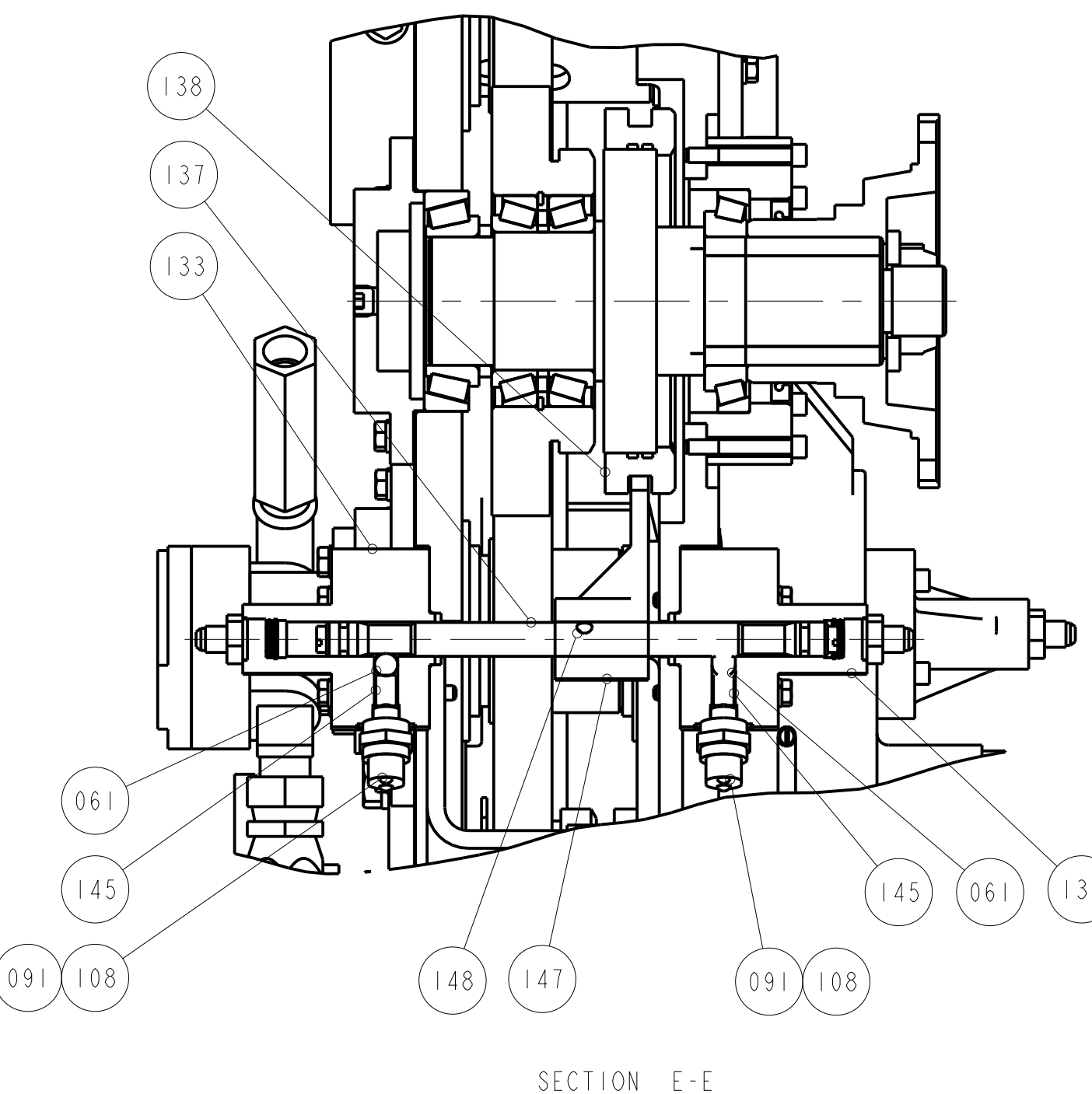
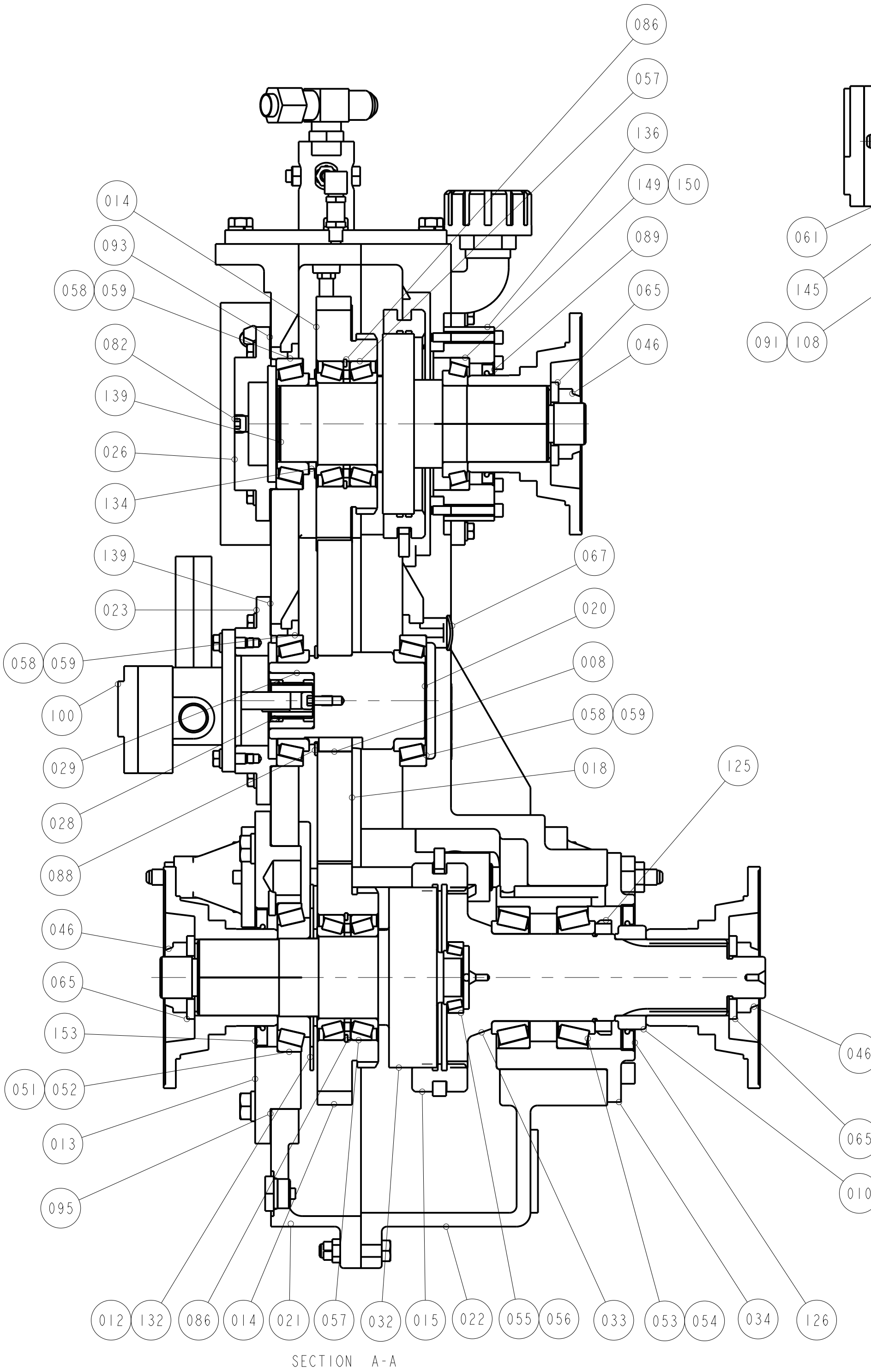
NOT FOR PRODUCTION

UNLESS OTHERWISE NOTED
1. USE STANDARD CAPSCREW TIGHTENING TORQUES
APPLYING LOCTITE 242 OR EQUIVALENT.

TEST PER SPECIFICATION DE-9905. REFERENCES: DE-0801, TB01-101, DE-0102		REVISION DATE 31-MAR-23	
MODEL TR2165	 Cotta		1301 PRINCE HALL DRIVE BELOIT, WI 53511
DRAWN TAP DATE 31-MAR-23	PART NAME SPLIT SHAFT PTO		
CHECKED XXX DATE XX-XXX-XX	PART NUMBER TR2165-21		
APPROVED DATE			
SCALE 0.250 SHEET 1 OF 2			
DIMENSIONS ARE IN INCHES AND REFERENCE UNLESS TOLERANCED			


PROPRIETARY NOTICE: THIS DRAWING AND ALL INFORMATION THEREON IS THE PROPERTY OF COTTA, LLC. THIS DRAWING IS NOT TO BE COPIED OR USED FOR THE PURPOSE OF MANUFACTURING EXCEPT BY WRITTEN CONSENT OF COTTA, LLC. TORSIONAL VIBRATIONS EXIST IN ALL ROTATING SYSTEMS. IT IS THE SOLE RESPONSIBILITY OF THE EQUIPMENT MANUFACTURER OR ASSEMBLER TO INSURE THAT NO DAMAGING CRITICALS FALL IN THE OPERATING RANGE OF THE SYSTEM.

ENGINEERING CHANGE NOTICES				
LTR	DESCRIPTION	ECN	DATE	BY



NOT FOR PRODUCTION

UNLESS OTHERWISE NOTED,
1. USE STANDARD CAPSCREW TIGHTENING TORQUES
APPLYING LOCTITE 242 OR EQUIVALENT.

TEST PER SPECIFICATION DE-9905. REFERENCES: DE-0801, TB01-101, DE-0102				REVISION DATE 31-MAR-23	
MODEL	TR2165			 Cotta 1301 PRINCE HALL DRIVE BELOIT, WI 53511	
DRAWN	TAP	DATE	31-MAR-23		
CHECKED	XXX	DATE	XX-XXX-XX		
APPROVED		DATE			
SCALE	0.312	SHEET	2 OF 2	PART NUMBER	TR2165-21
DIMENSIONS ARE IN INCHES AND TOLERANCES UNLESS OTHERWISE SPECIFIED					

Cotta
1301 PRINCE HALL DRIVE
BELOIT, WI 53511

SPLIT SHAFT PTO

TR2165-21