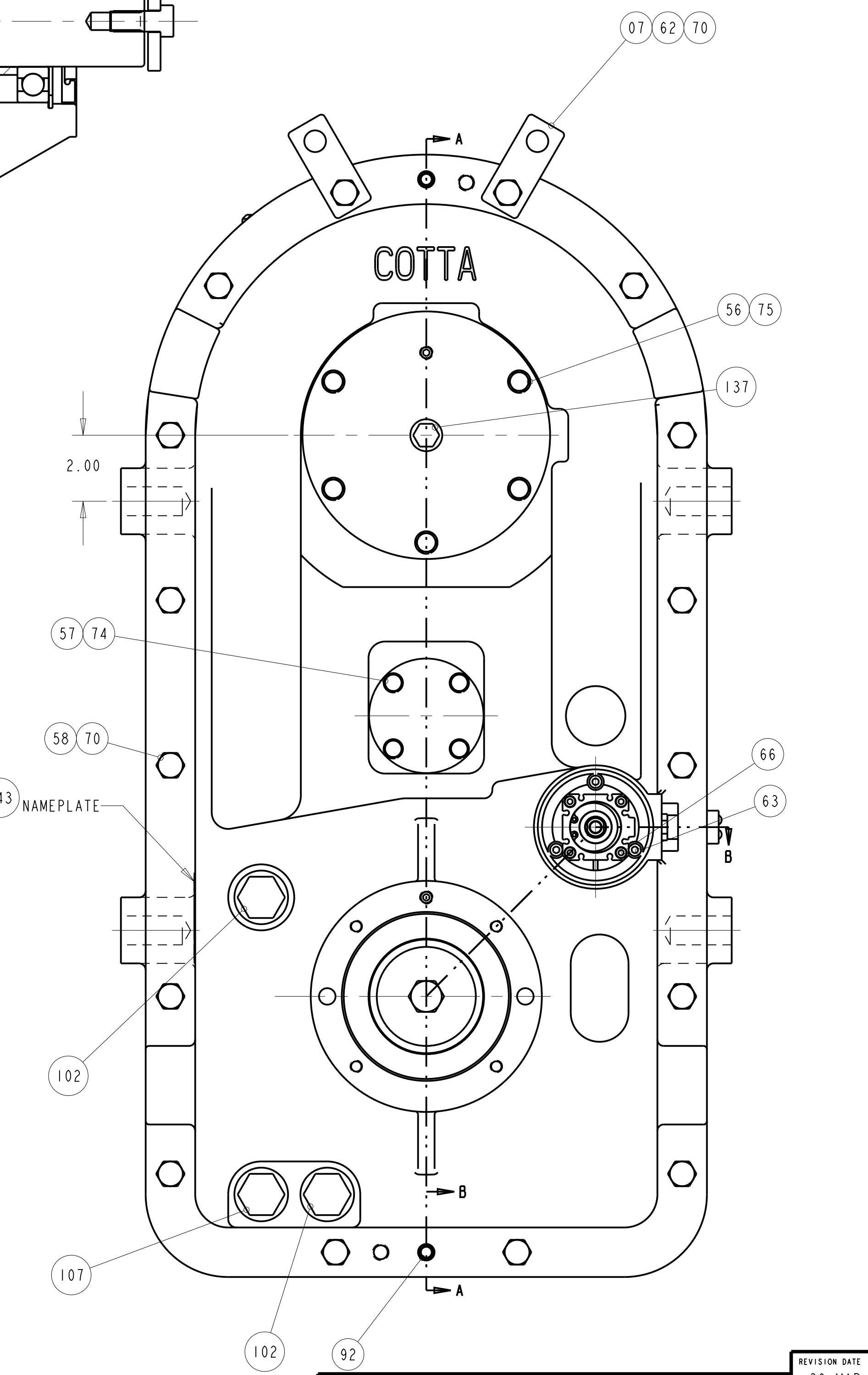
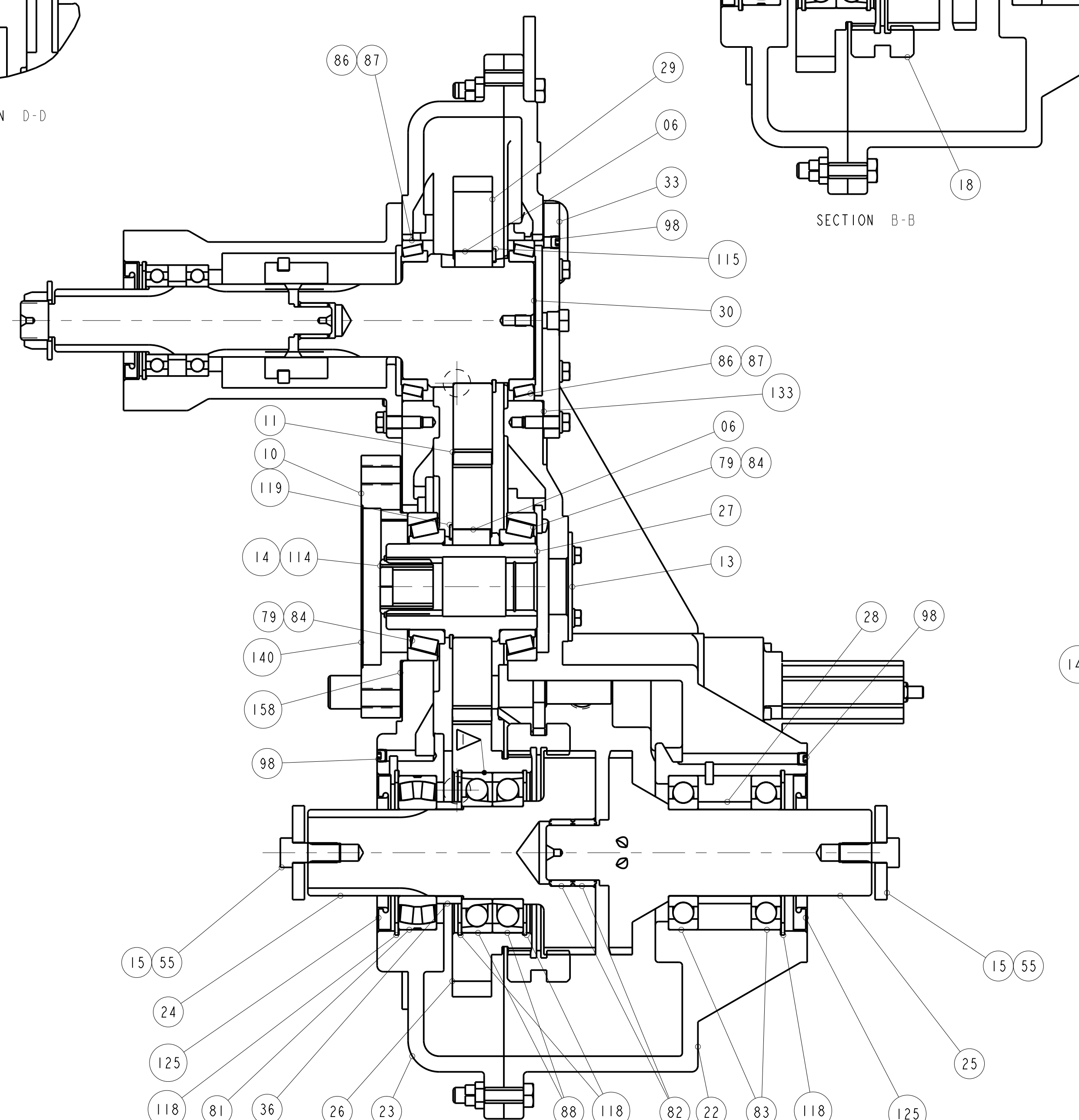
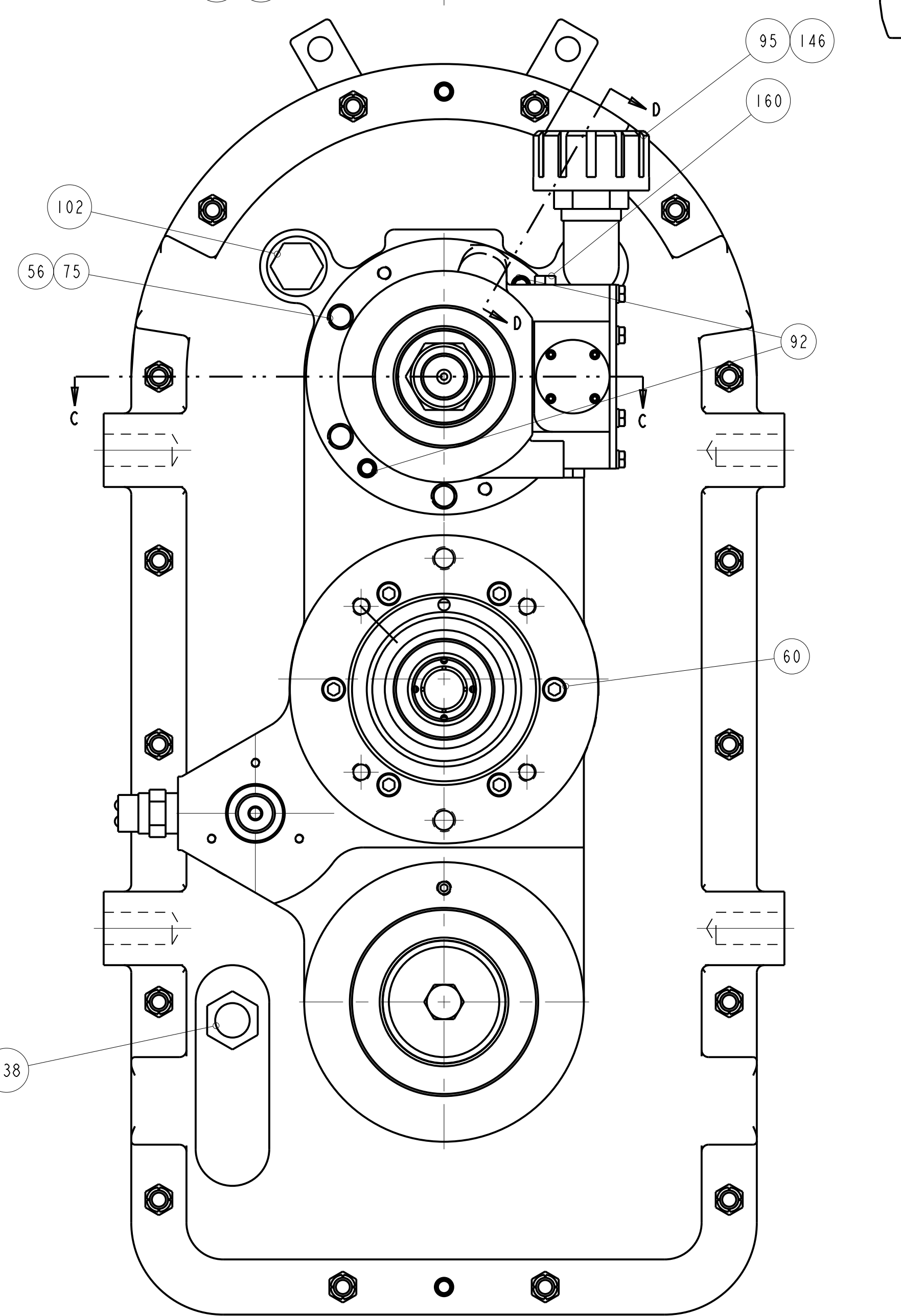
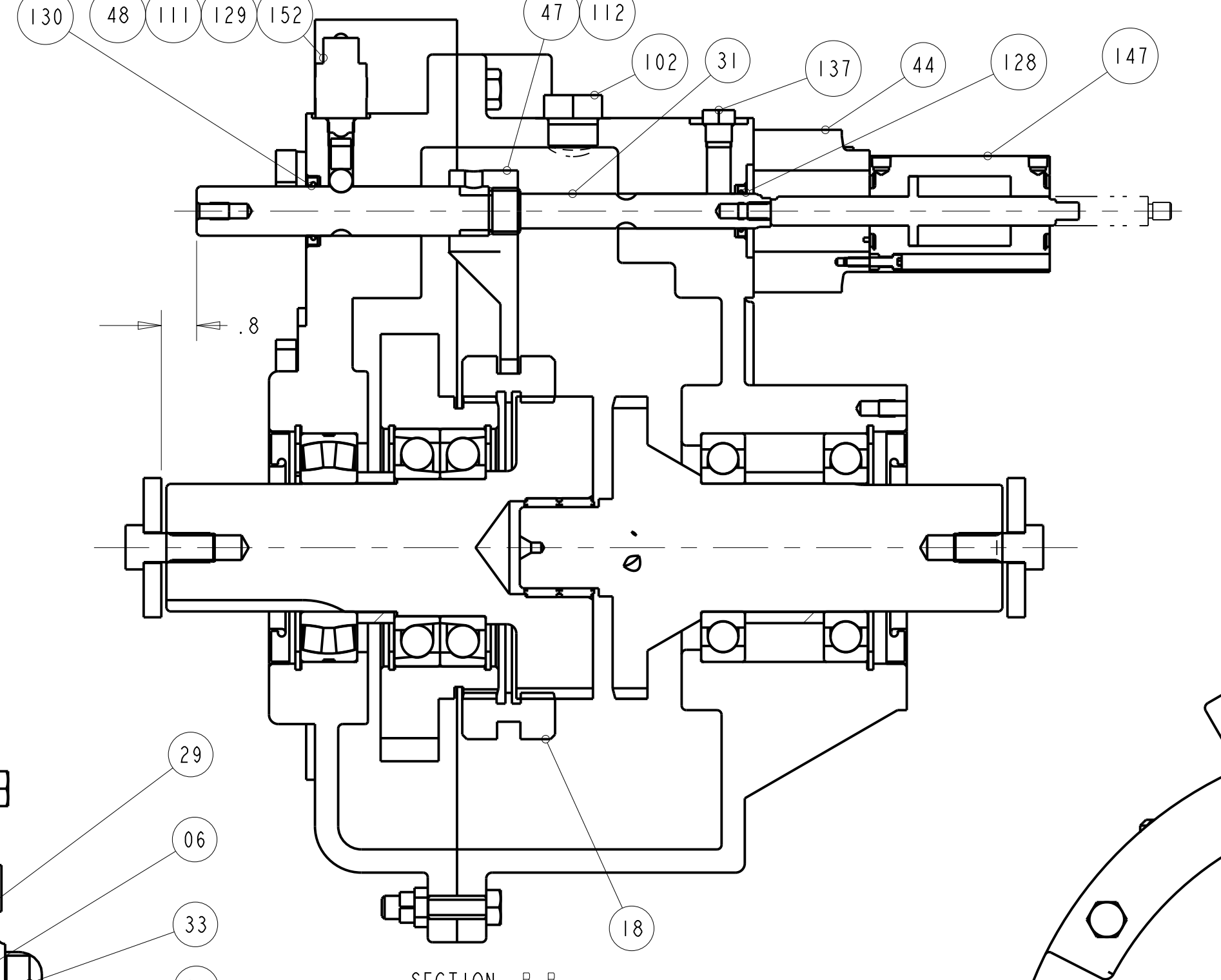
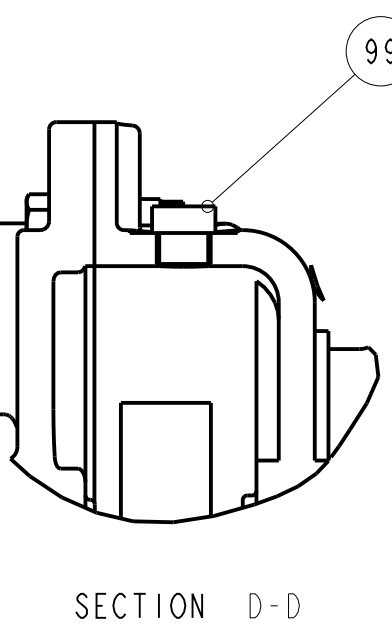
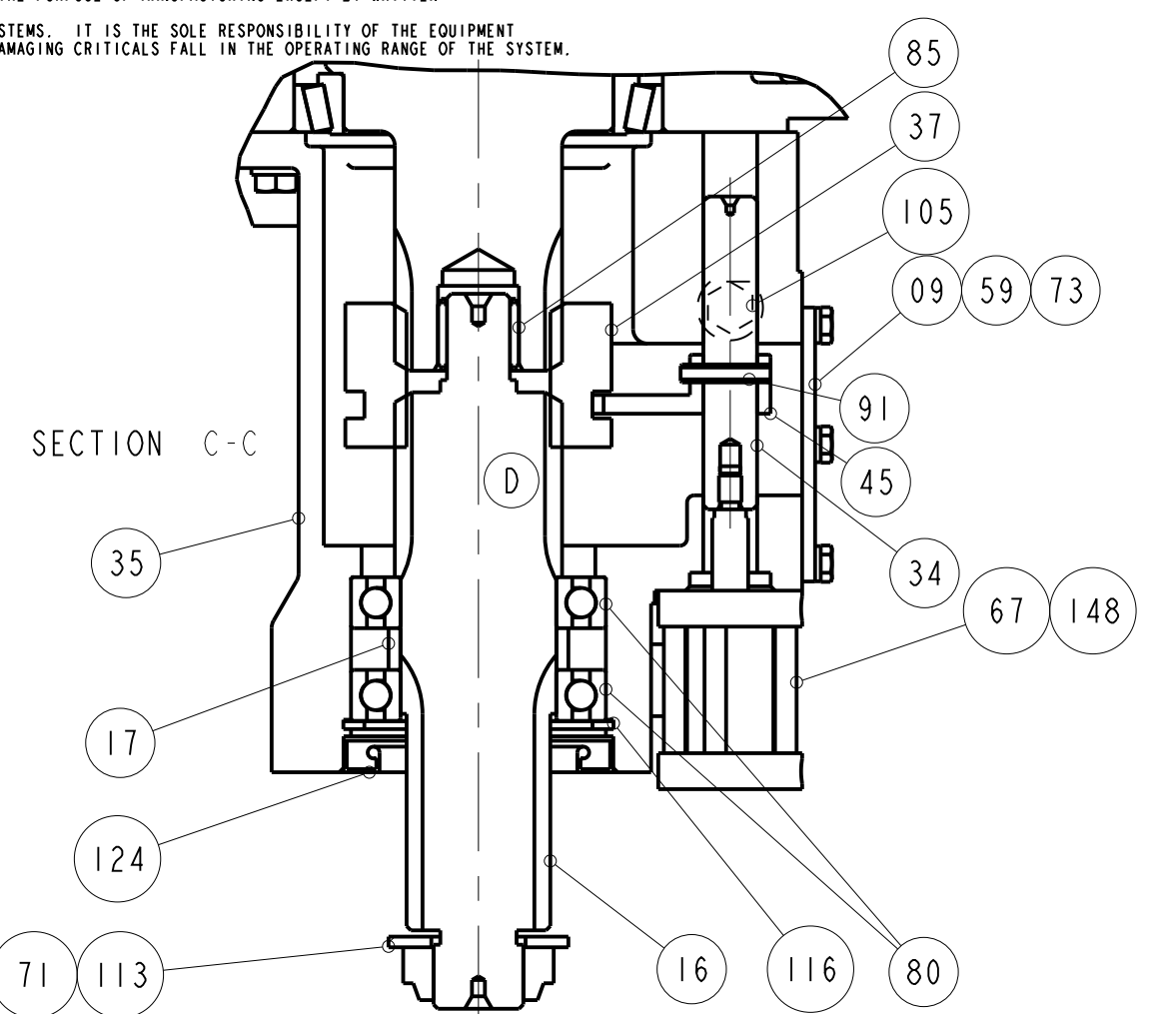


PROPRIETARY NOTICE: THIS DRAWING AND ALL INFORMATION THEREON IS THE PROPERTY OF COTTA, LLC. THIS DRAWING IS NOT TO BE COPIED OR USED FOR THE PURPOSE OF MANUFACTURING EXCEPT BY WRITTEN CONSENT OF COTTA, LLC. TORSIONAL VIBRATIONS EXIST IN ALL ROTATING SYSTEMS. IT IS THE SOLE RESPONSIBILITY OF THE EQUIPMENT MANUFACTURER OR ASSEMBLER TO INSURE THAT NO DAMAGING CRITICALS FALL IN THE OPERATING RANGE OF THE SYSTEM.

ENGINEERING CHANGE NOTICES


LTR	DESCRIPTION	ECN	DATE	BY



SECTION A-A

NOT FOR PRODUCTION

UNLESS OTHERWISE NOTED
1. USE STANDARD CAPSCREW TIGHTENING TORQUES
APPLYING LOCTITE 242 OR EQUIVALENT.

92		REVISION DATE 30-MAR-23	
TEST PER SPECIFICATION DE-9905. REFERENCES: DE-0801, TB01-101, DE-0102			
MODEL TR2237		1301 PRINCE HALL DRIVE BELOIT, WI 53511	
DRAWN TAP	DATE 30-MAR-23	 Cotta	
CHECKED XXX	DATE XX-XX-XX		
APPROVED	DATE	SPLIT SHAFT PTO	
SCALE 0.375	SHEET OF 1		
DIMENSIONS ARE IN INCHES AND		PART NUMBER TR2237-2	