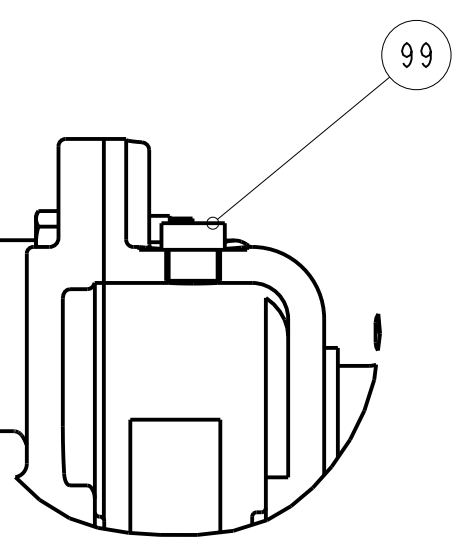
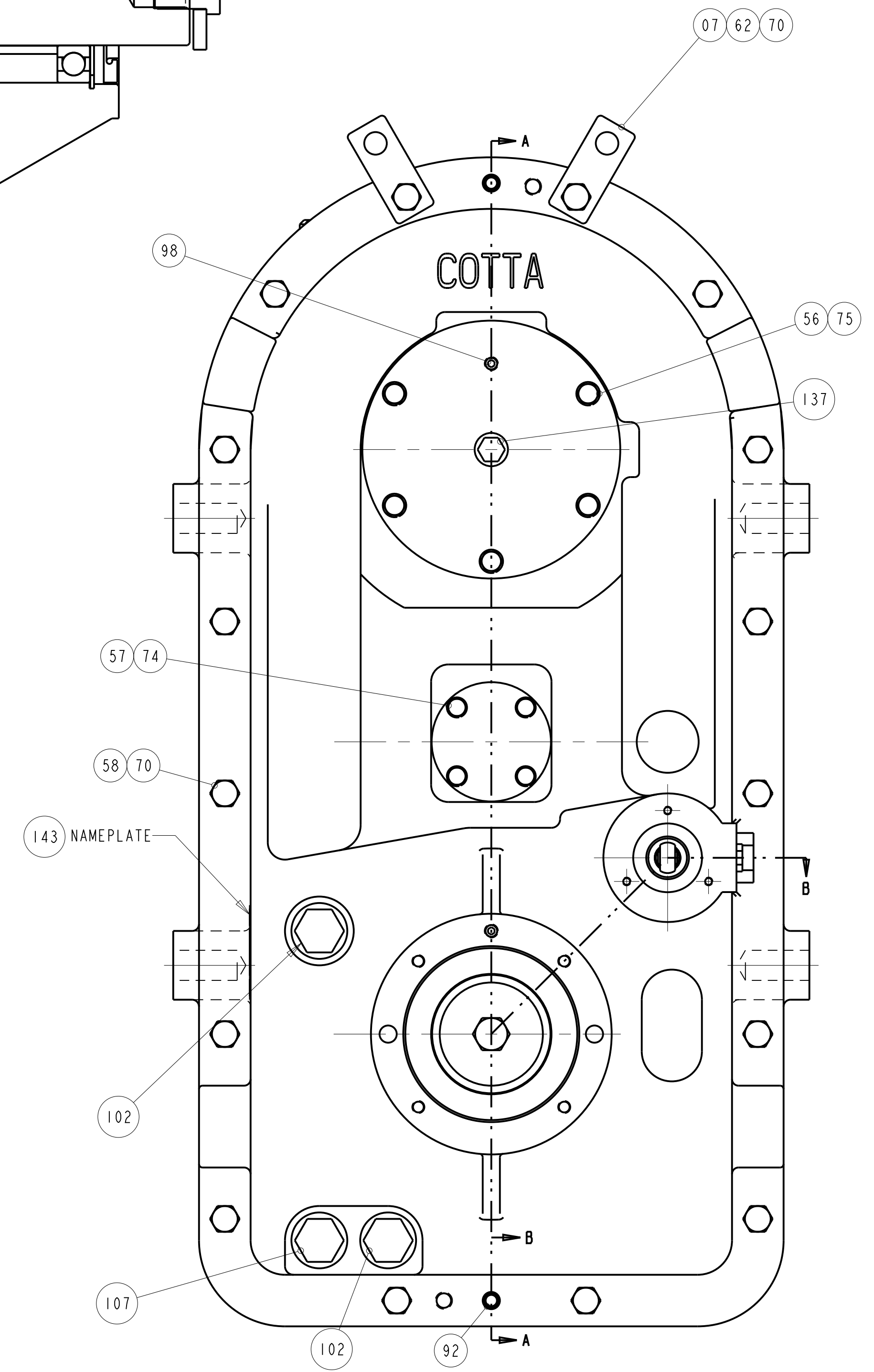
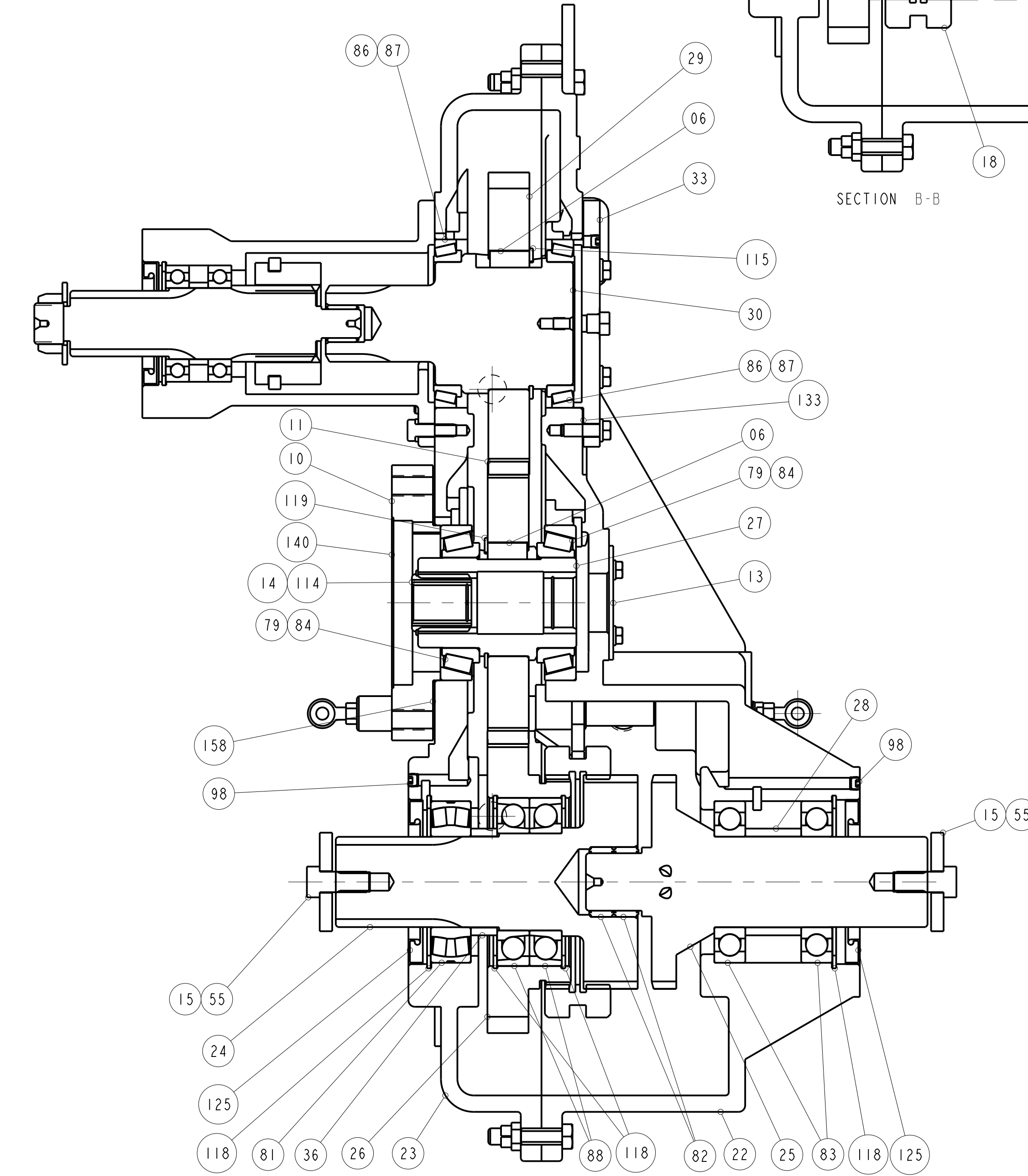
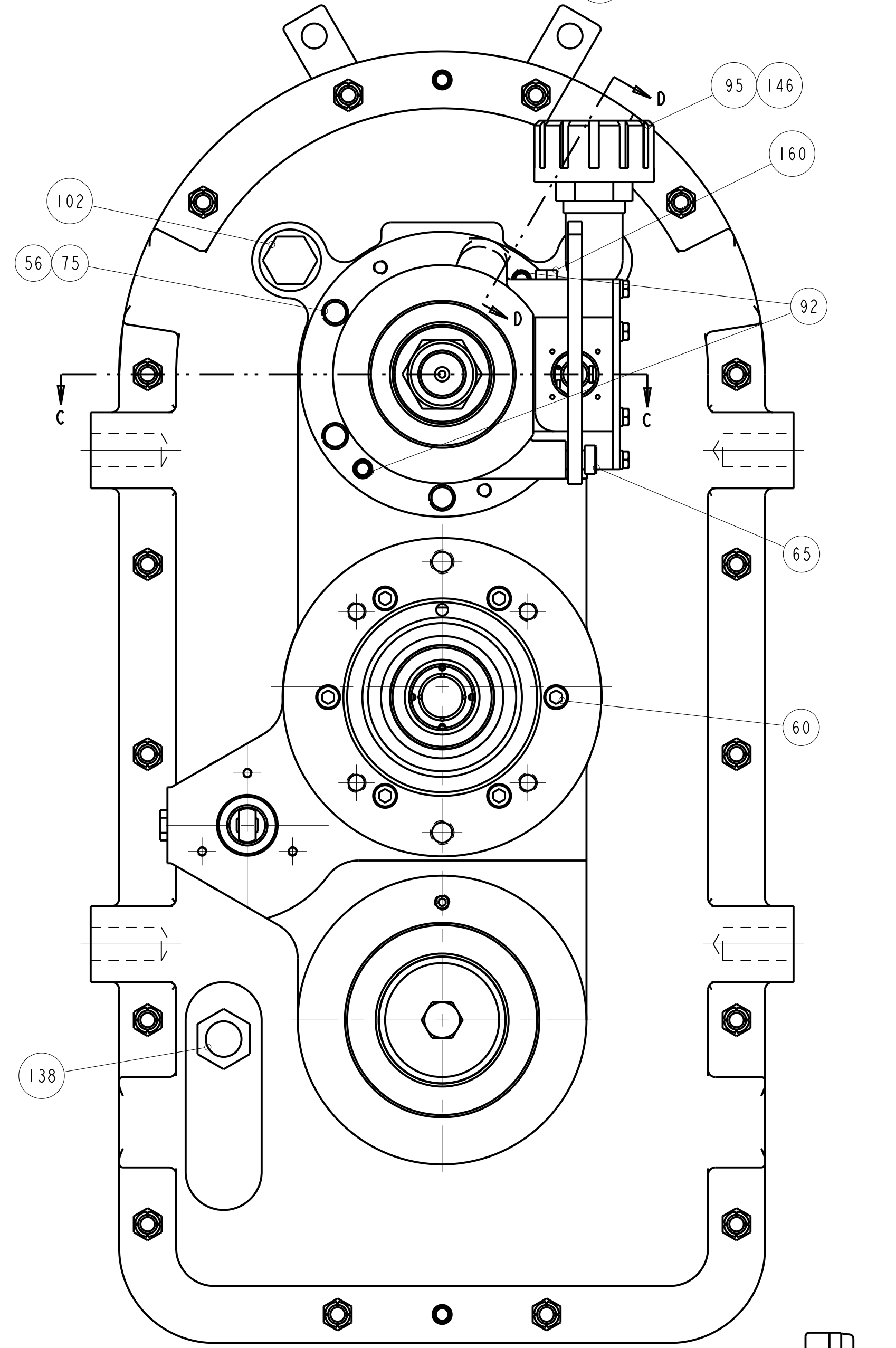
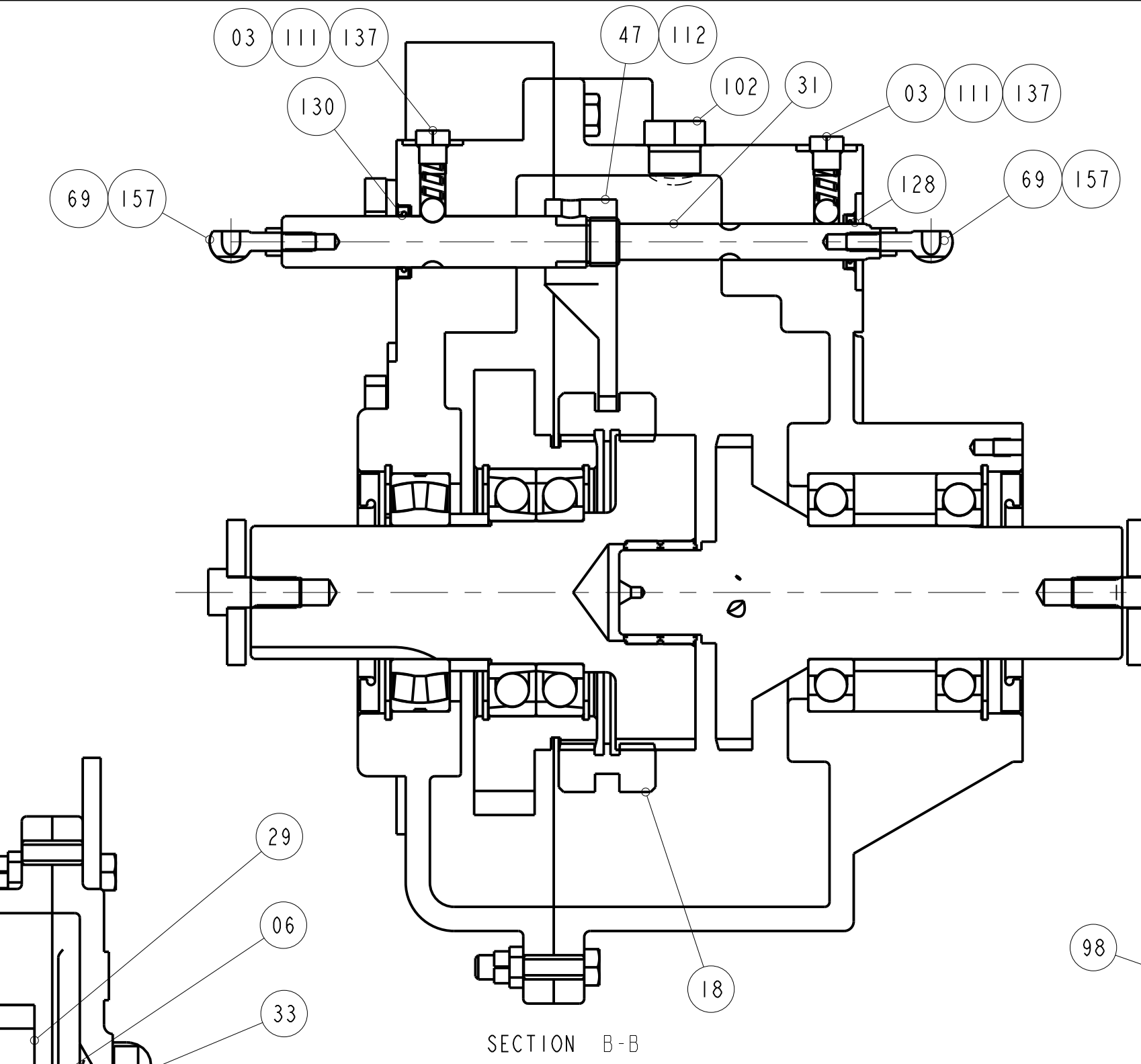
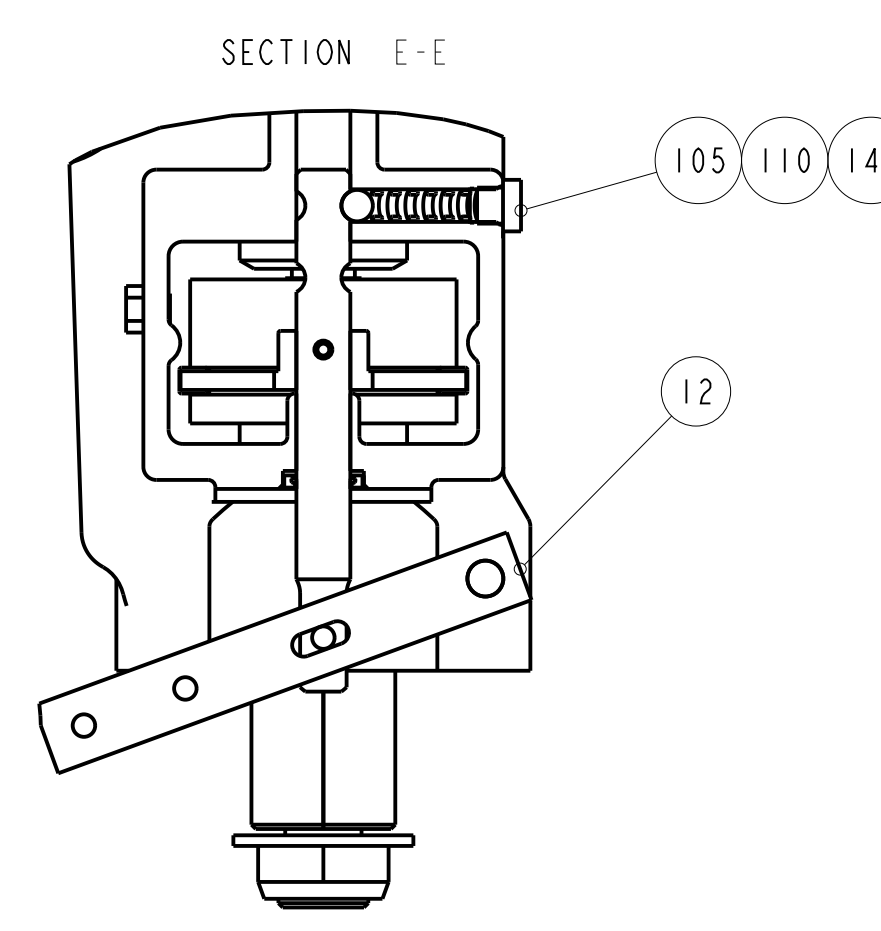
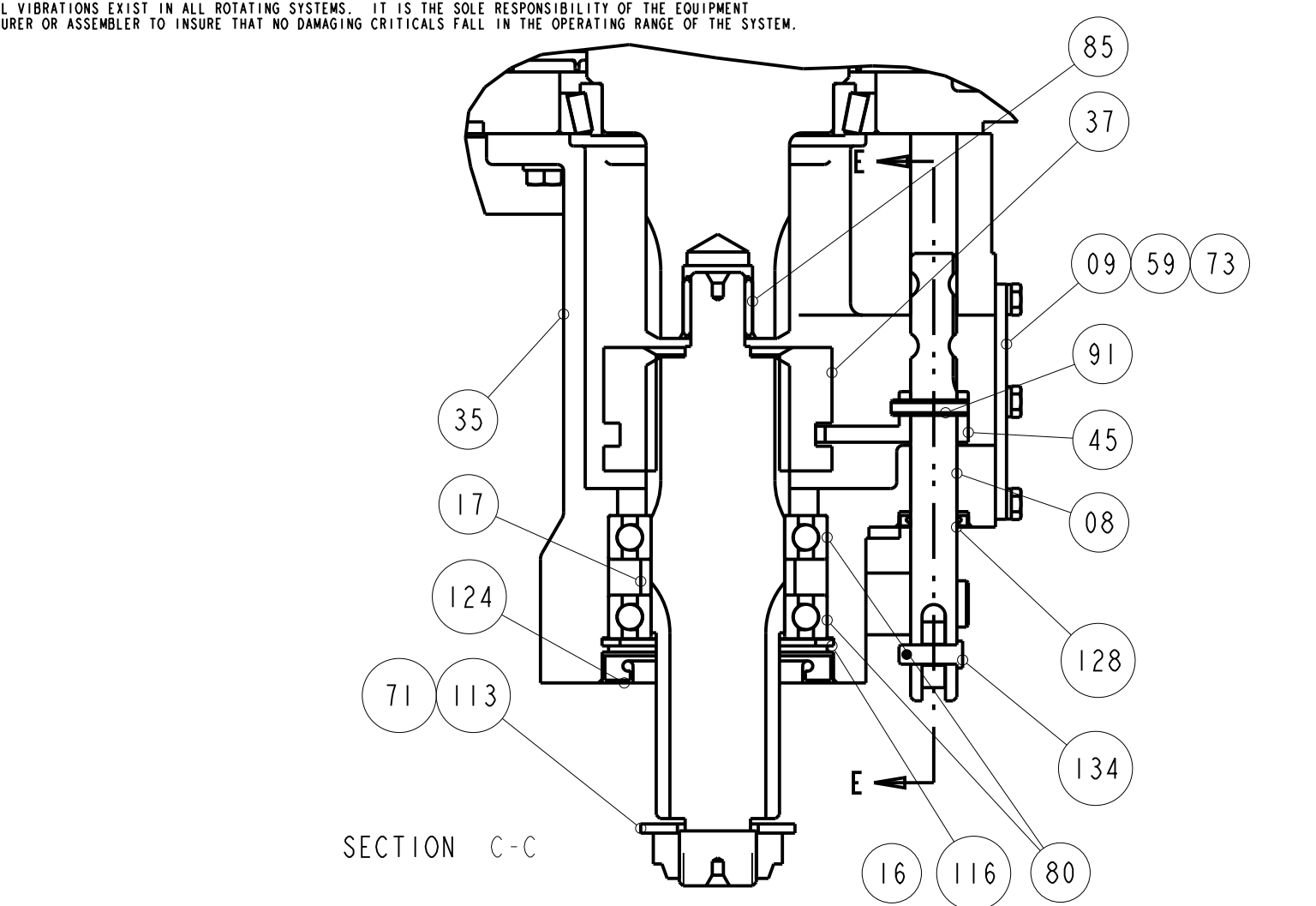



PROPRIETARY NOTICE: THIS DRAWING AND ALL INFORMATION THEREON IS THE PROPERTY OF COTTA, LLC. THIS DRAWING IS NOT TO BE COPIED OR USED FOR THE PURPOSE OF MANUFACTURING EXCEPT BY WRITTEN CONSENT OF COTTA, LLC. TORSIONAL VIBRATIONS EXIST IN ALL ROTATING SYSTEMS. IT IS THE SOLE RESPONSIBILITY OF THE EQUIPMENT MANUFACTURER OR ASSEMBLER TO INSURE THAT NO DAMAGING CRITICALS FALL IN THE OPERATING RANGE OF THE SYSTEM.

ENGINEERING CHANGE NOTICES				
LTR	DESCRIPTION	ECN	DATE	BY



NOT FOR PRODUCTION

UNLESS OTHERWISE NOTED
1. USE STANDARD CAPSCREW TIGHTENING TORQUES
APPLYING LOCTITE 242 OR EQUIVALENT.

TEST PER SPECIFICATION DE-9905. REFERENCES: DE-0801, TB01-101, DE-0102			REVISION DATE 31-MAR-23	
MODEL TR2237		 Cotta 1301 PRINCE HALL DRIVE BELOIT, WI 53511		
DRAWN TAP	DATE 31-MAR-23	PART NAME SPLIT SHAFT PTO		
CHECKED XXX	DATE XX-XX-XX			
APPROVED	DATE	PART NUMBER TR2237-6		
SCALE 0.375	SHEET OF 1			
DIMENSIONS ARE IN INCHES AND				