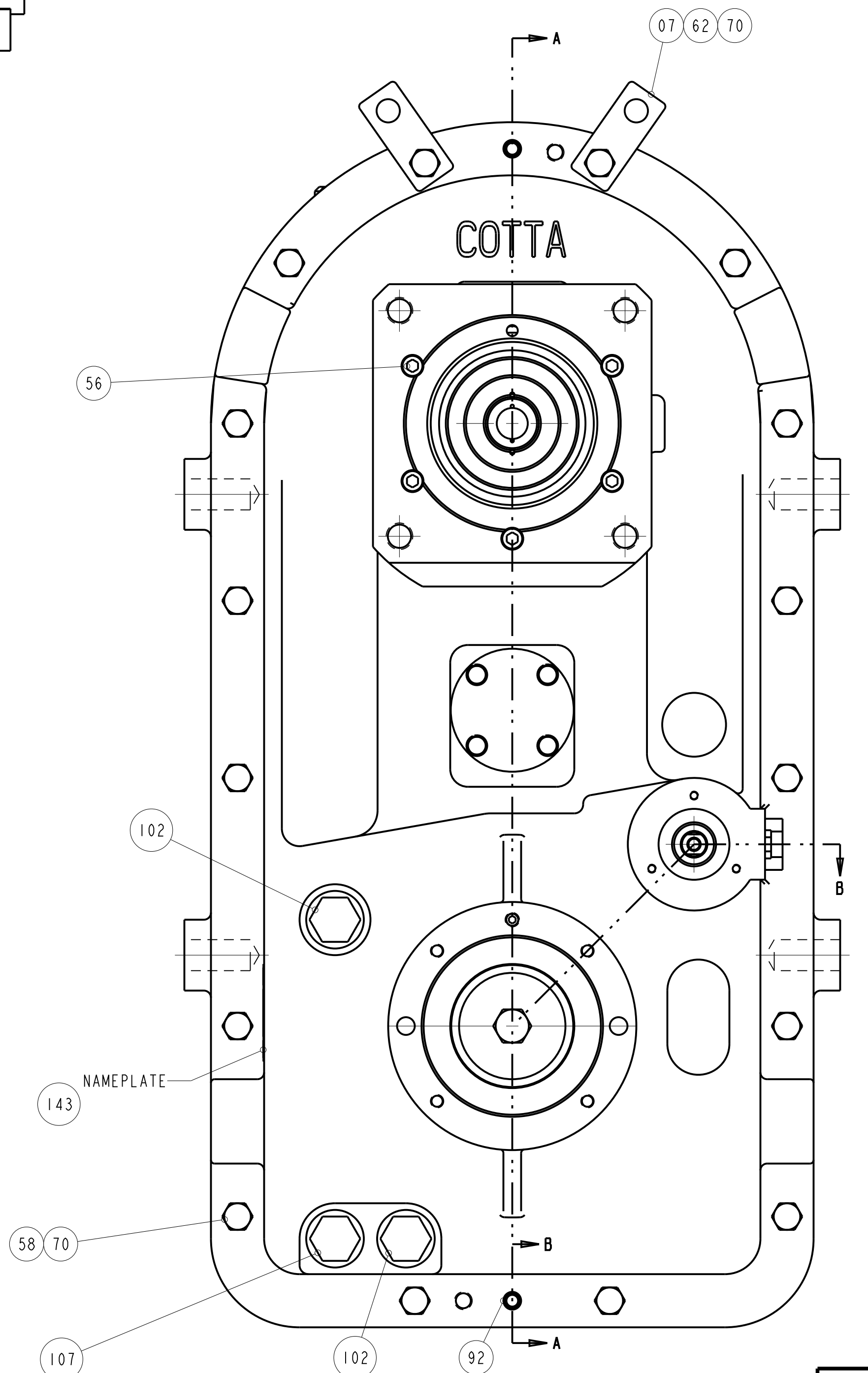
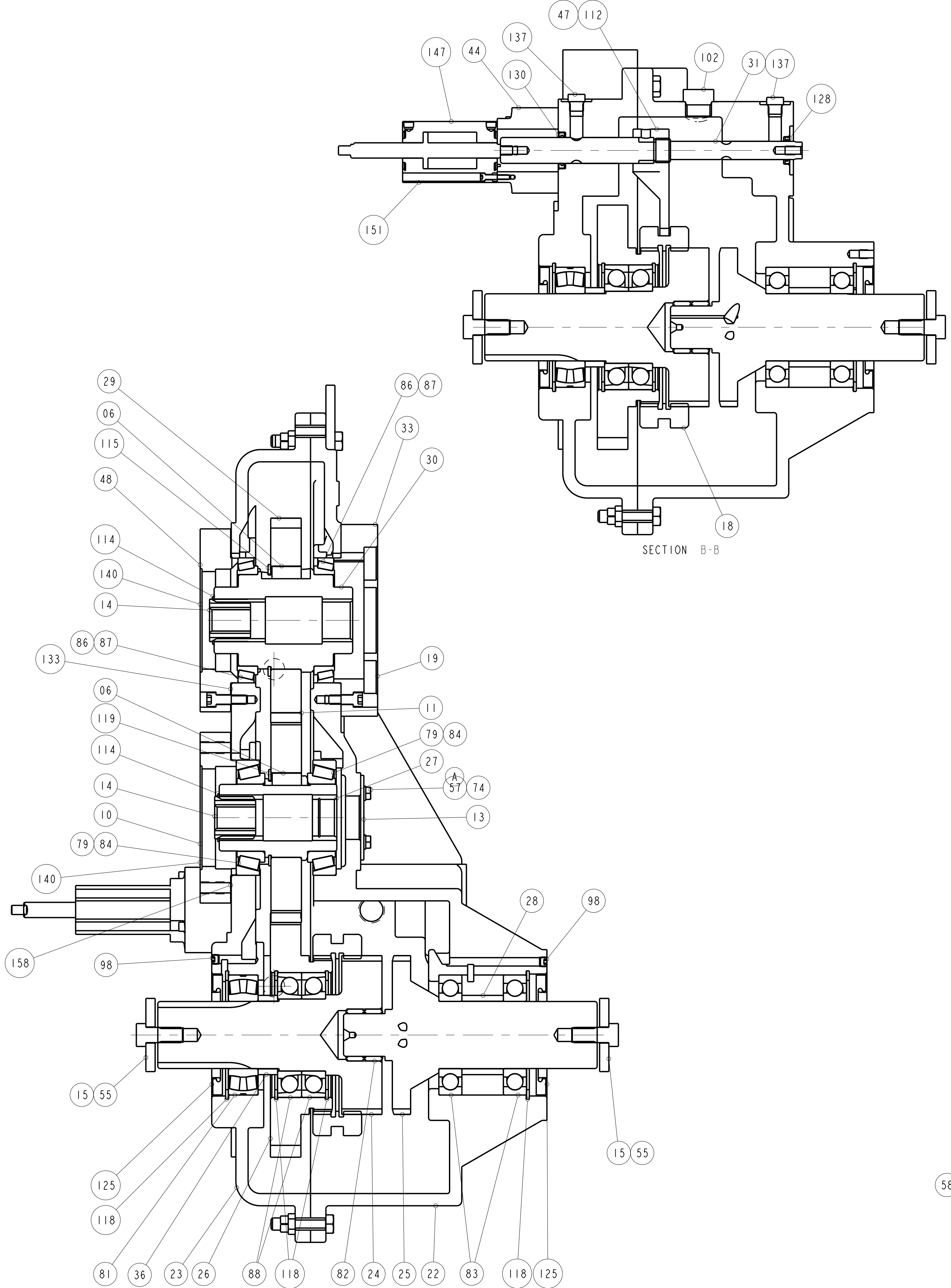
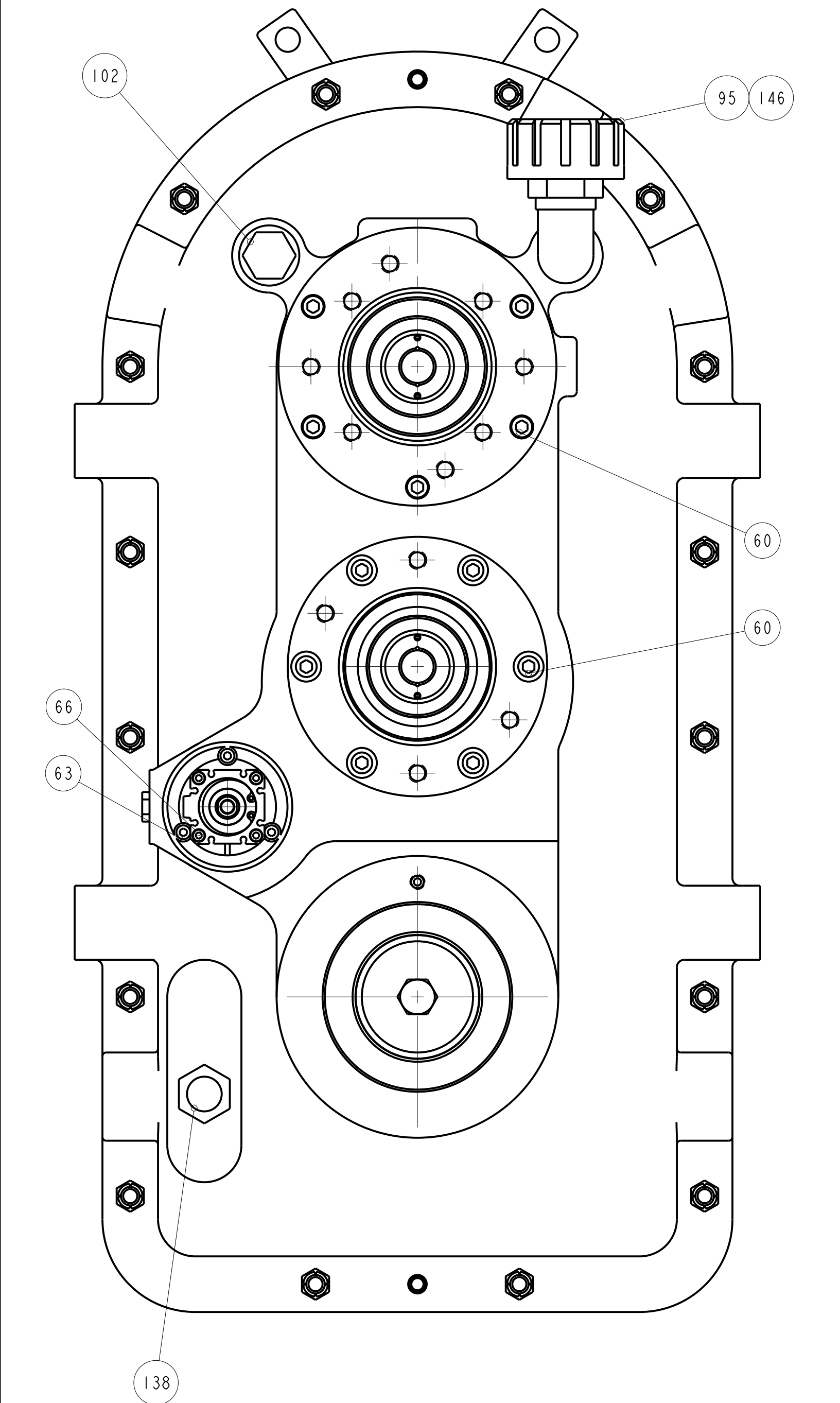


PROPRIETARY NOTICE: THIS DRAWING AND ALL INFORMATION THEREON IS THE PROPERTY OF COTTA, LLC. THIS DRAWING IS NOT TO BE COPIED OR USED FOR THE PURPOSE OF MANUFACTURING EXCEPT BY WRITTEN CONSENT OF COTTA, LLC. TORSIONAL VIBRATIONS EXIST IN ALL ROTATING SYSTEMS. IT IS THE SOLE RESPONSIBILITY OF THE EQUIPMENT MANUFACTURER OR ASSEMBLER TO INSURE THAT NO DAMAGING CRITICALS FALL IN THE OPERATING RANGE OF THE SYSTEM.

ENGINEERING CHANGE NOTICES				
LTR	DESCRIPTION	ECN	DATE	BY



NOT FOR PRODUCTION

UNLESS OTHERWISE NOTED
1. USE STANDARD CAPSCREW TIGHTENING TORQUES
APPLYING LOCTITE 242 OR EQUIVALENT.

TEST PER SPECIFICATION DE-9905. REFERENCES: DE-0801, TB01-101, DE-0102					REVISION DATE	
MODEL TR2238					31-MAR-23	
DRAWN TAP DATE 31-MAR-23					PART NAME	
CHECKED XXX DATE XX-XXX-XX					SPLIT SHAFT PTO	
APPROVED DATE					PART NUMBER	
SCALE 0.375 SHEET 1 OF 1					TR2238-1	
DIMENSIONS ARE IN INCHES AND REFERENCE UNLESS TOLERANCED					1301 PRINCE HALL DRIVE BELOIT, WI 53511	